

Re:Photo:Surfaces Griffin Town Montreal, Quebec

Close-up photographs of urban surfaces shot and printed at 1:1-scale, posted directly over the areas depicted, and re-photographed in situ.

Andrew Owen A01

+1.647.770.0885

andrew_a01@yahoo.ca

A01creative.com

[A01 ART NOW PDF](#)

ARSENAL

CONTEMPORARY ART CONTEMPORAIN

GALERIE DIVISION

2020 RUE WILLIAM



RUE
CANNING

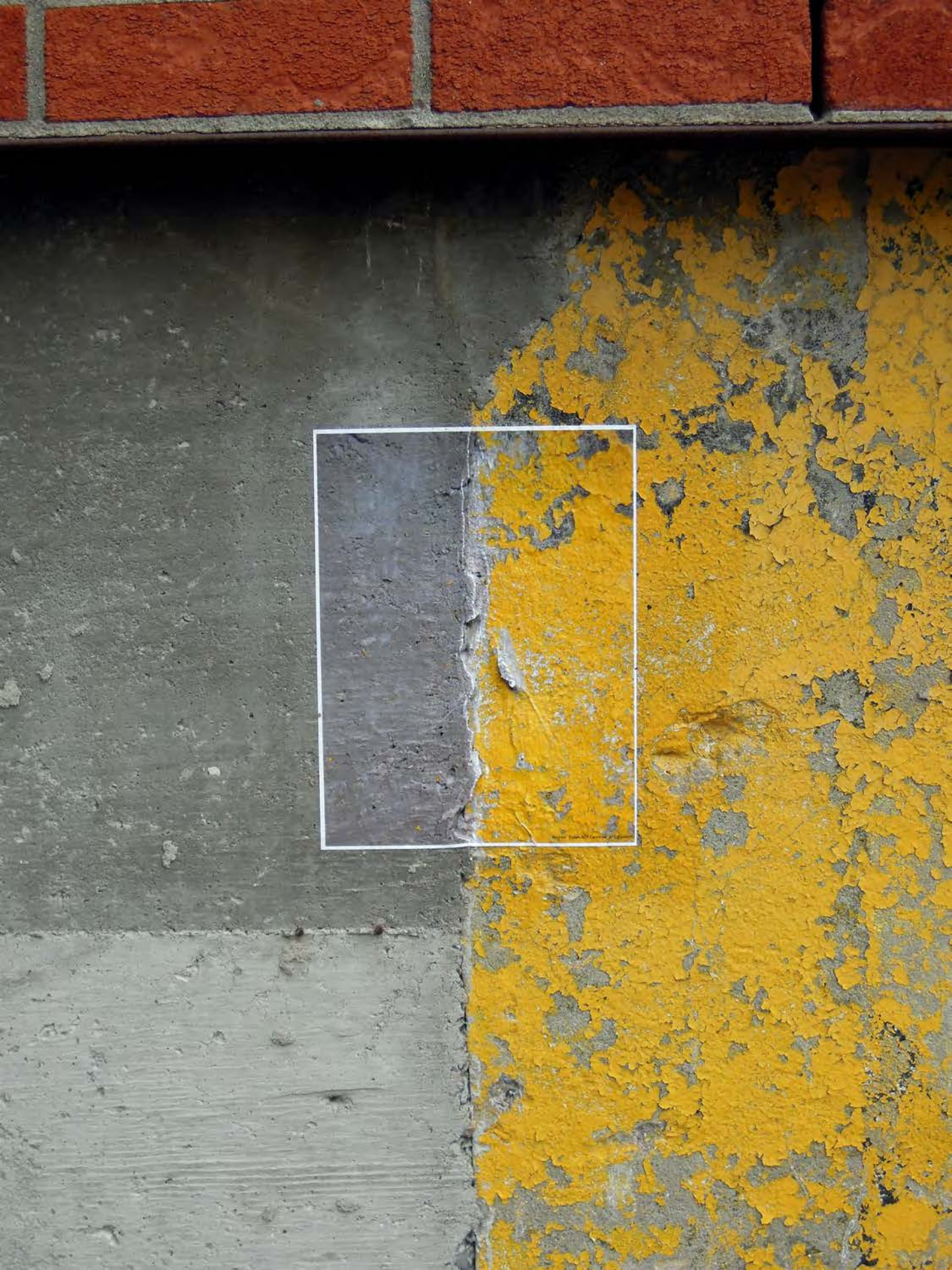
ARSENAL

ARSENAL



**STATIONNEMENT RÉSERVÉ
POUR LES CLIENTS DE LA
GALERIE DIVISION**

**PARKING RESERVED
FOR CLIENTS OF
GALERIE DIVISION**







SYSTÈMES DE SÉCURITÉ
TLP COMMUNICATIONS
ALARM SYSTEMS
514-761-0585







NO.SERIE G-11884-2

99	1	2	3	4	5	6	02
00	VÉRIFIÉ HYDRO-QUÉBEC APPAREILLAGE ÉLECTRIQUE ATELIER JARRY						03
	7	8	9	10	11	12	04

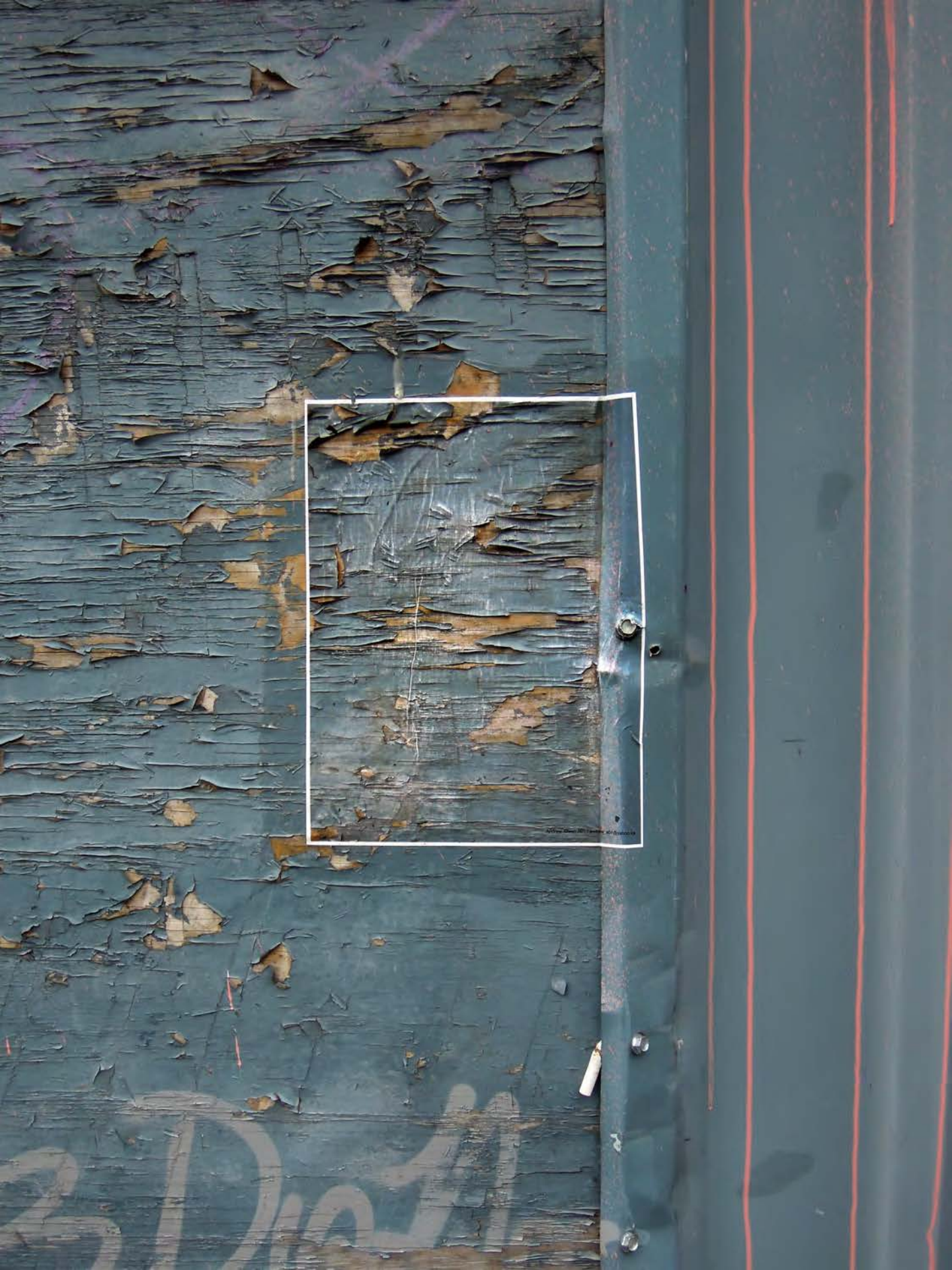


SS 2588 R



L
S
1
w





Sortie
urgence

RÉCEPTION
&
EXPÉDITION



ANTHURUS





Andrew Owen ACH | andrew_ach@yale.edu





Image: Open Access Journal of Research

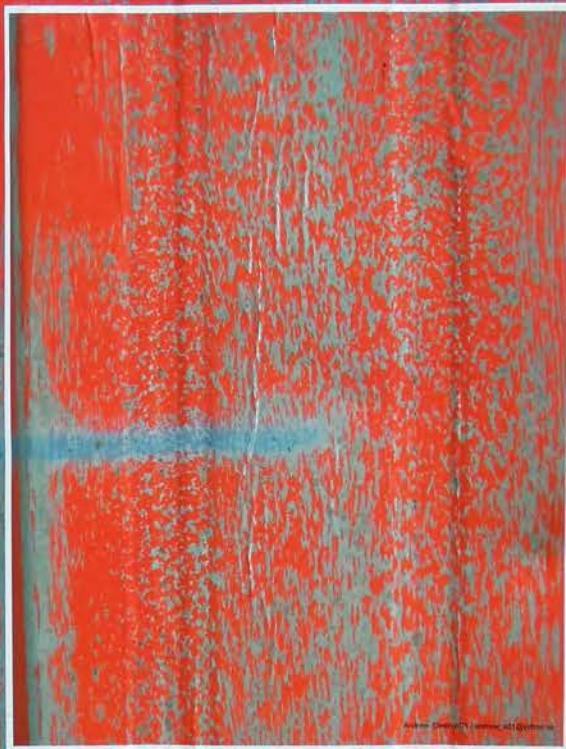


Image: Open Access Journal of Research

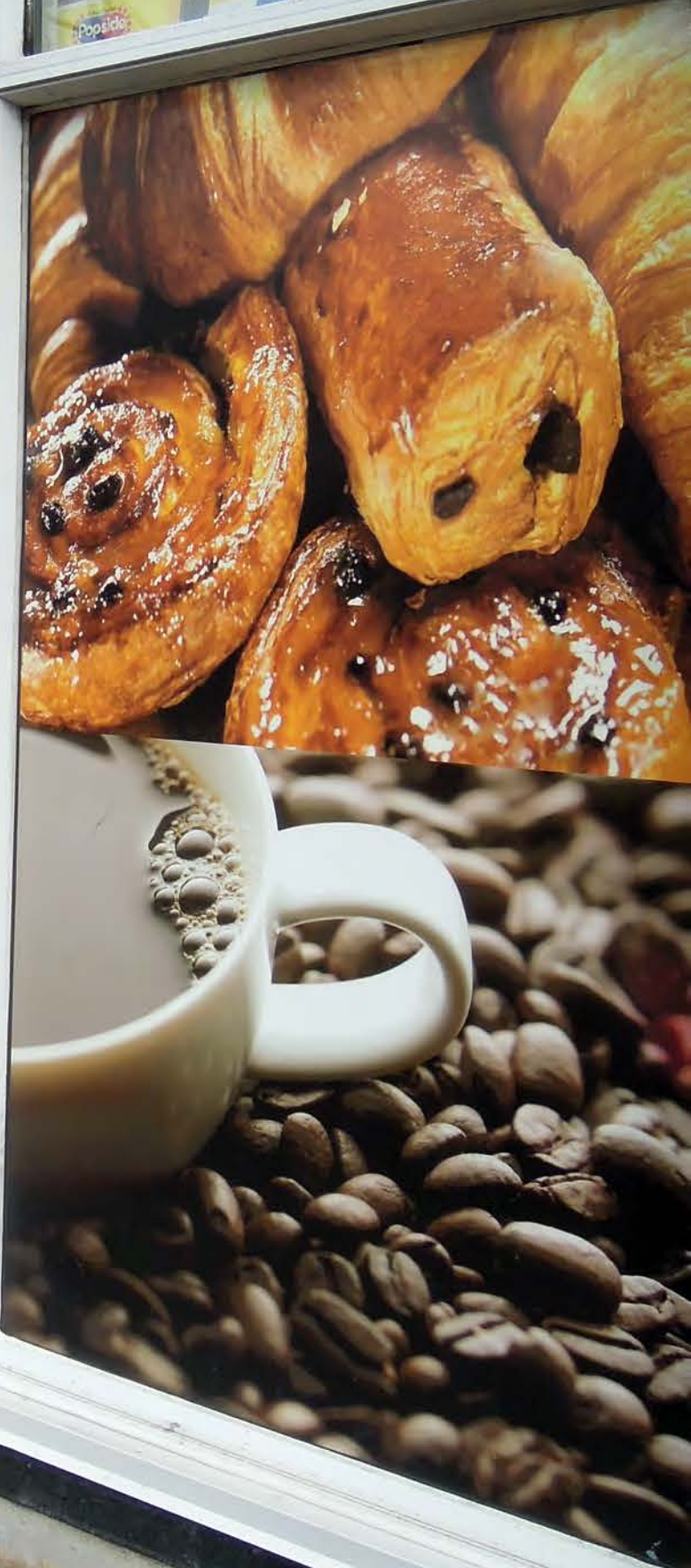




www.dreamstime.com/stock

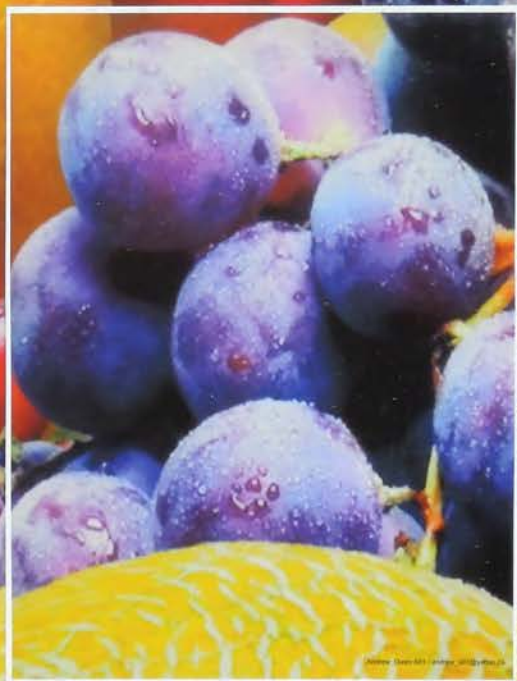
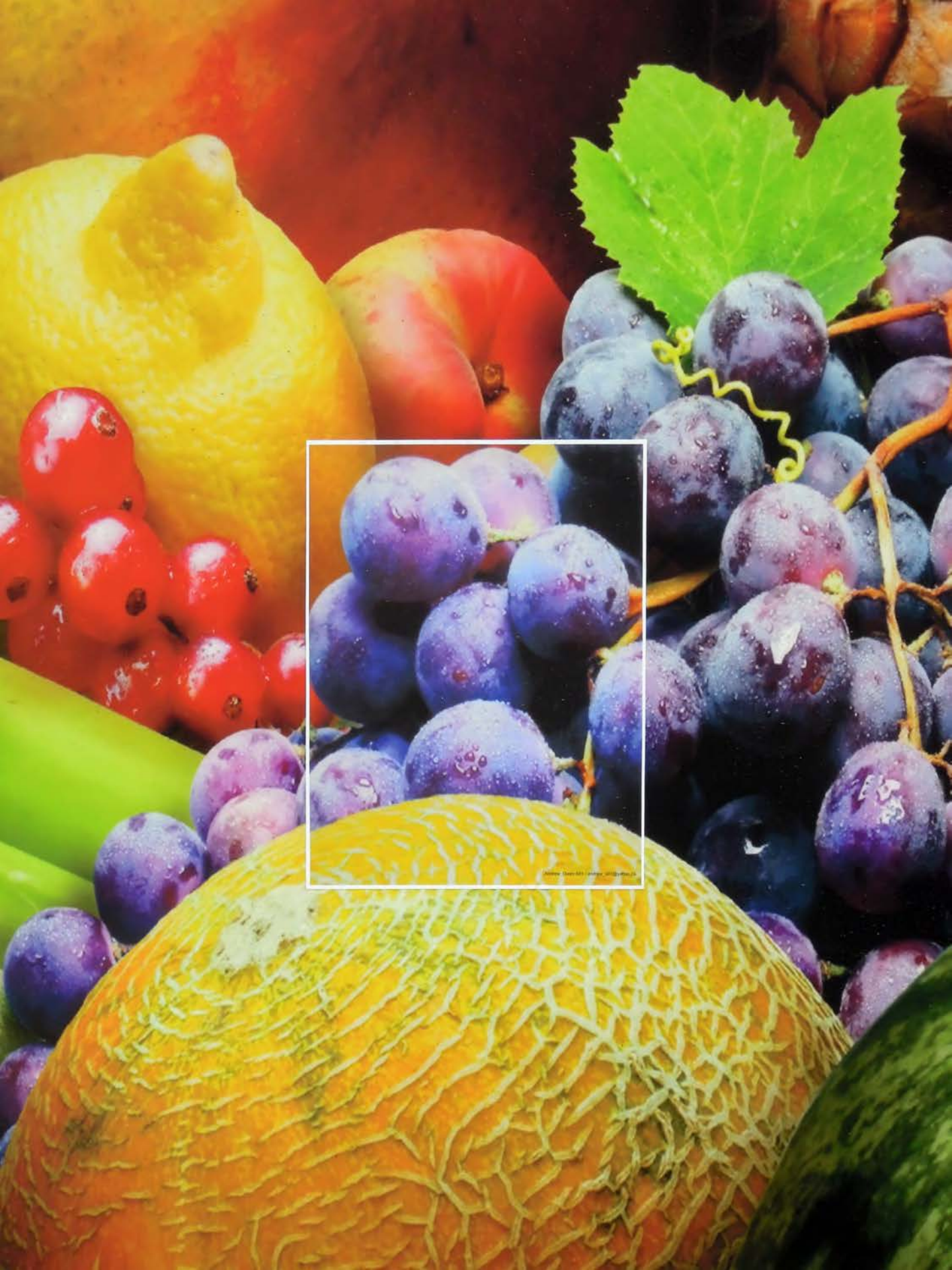
www.dreamstime.com/stock



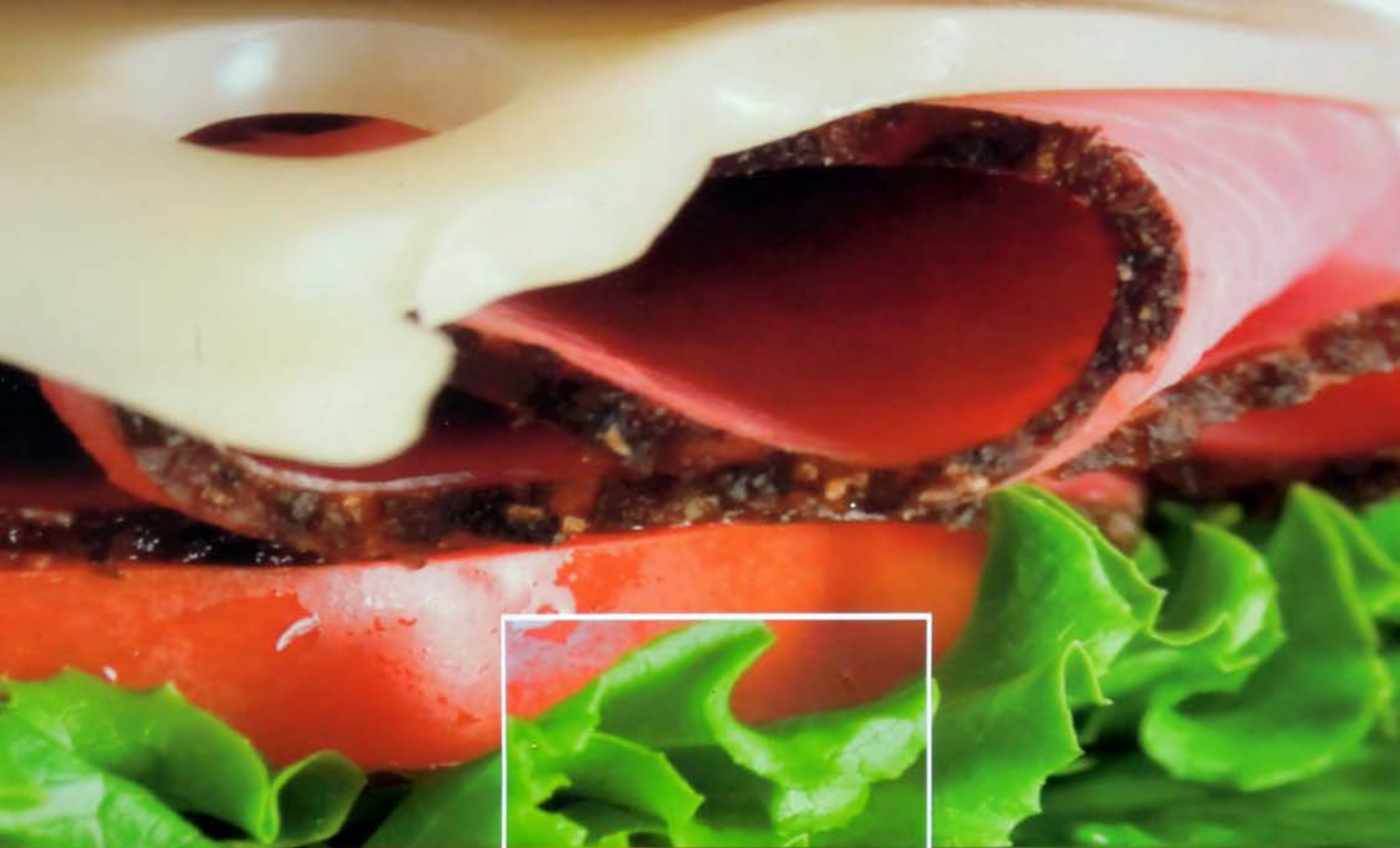




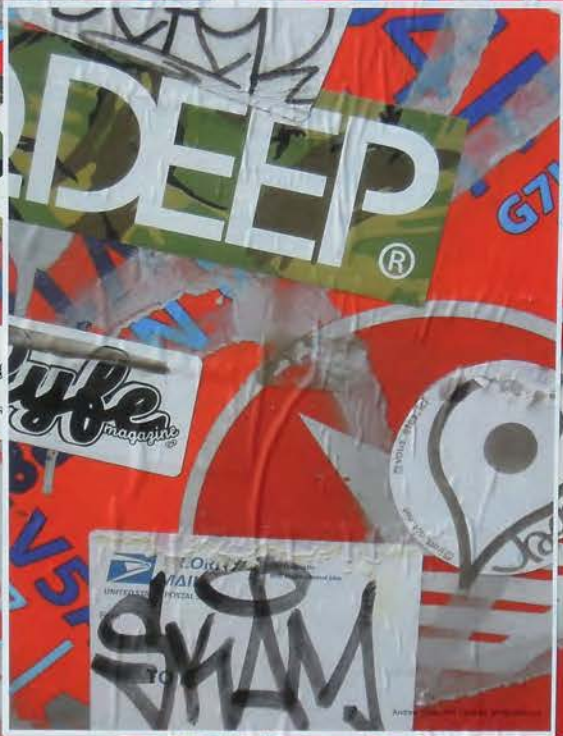




© 2000, Steve Hill Creative, All Rights Reserved.







10 DEEP®

Life magazine

SWAN

JOSH

THERE'S SOMETHING ABOUT YOU...
|
—

 Le gouvernement abandonne l'école publique






Author: [unreadable] | Contact: [unreadable]



