

# A01

## Andrew Owen A01 Creative Produce

### A01 ART THEN PDF

This A01 ART THEN PDF presents a selected images and information regarding artworks by the visual artist Andrew Owen A01 from 1985 to 2004.

A01 ART THEN PDF is best viewed with [Adobe Reader](#) in Full Screen Mode, using arrow keys to page through the document.

A01 ART THEN PDF is produced for transmission by standard e-mail, and is suitable for draft printing at 11 x 17 inch or A3 size.

Additional images can be viewed via the blue text hyperlinks embedded in this document.

High-resolution images suitable for publication are available upon request.

A version of A01 ART PDF that includes more recent series of artworks is available via the following link: [A01 ART NOW PDF](#).

Copyright©AndrewOwen2012  
[\[www.A01creative.com\]](http://www.A01creative.com)



**Reimagining Classical**  
[Japan & Taiwan]  
2 0 0 1 - 2 0 0 4



**Representing the Real**  
[Korea & Japan]  
1 9 9 6 - 2 0 0 1



**Excavating the Surface**  
[Korea & India]  
1 9 9 6 - 2 0 0 0



**Layers of Reading**  
**Paintings & Excavations**  
1 9 9 2 - 1 9 9 5



**Commodification of Nature**  
**Environmental Produce**  
1 9 8 8 - 1 9 9 3



**Transforming Inorganic**  
**Early A01 Artworks**  
1 9 8 5 - 1 9 8 8

# A01

## Andrew Owen A01 Creative Produce

### Reimagining Classical 2000 - 2004

Artworks created while living and working in Korea, Japan and Taiwan/China from 2000 to 2004.

Informed by more than twenty years of formally studying traditional Korean, Japanese and Chinese painting under a series of master practitioners in Canada, Malaysia, Korea, Japan and Taiwan.

Taking the form of spray painted impressions of flowers on paper; ink and watercolour on paper; Chinese calligraphy of classical texts, Buddhist sutras, and original poetry; and carved stone seals with designs in an ancient form of Chinese script expressing idioms and variations of the artist's name.

All of the paintings have been mounted for presentation with fine brocade silk in traditional hanging scrolls of the finest quality crafted by master scroll mounters in Japan and Taiwan.

Copyright©AndrewOwen2012  
[ [www.A01creative.com](http://www.A01creative.com) ]



**Wild Ginger Flowers**

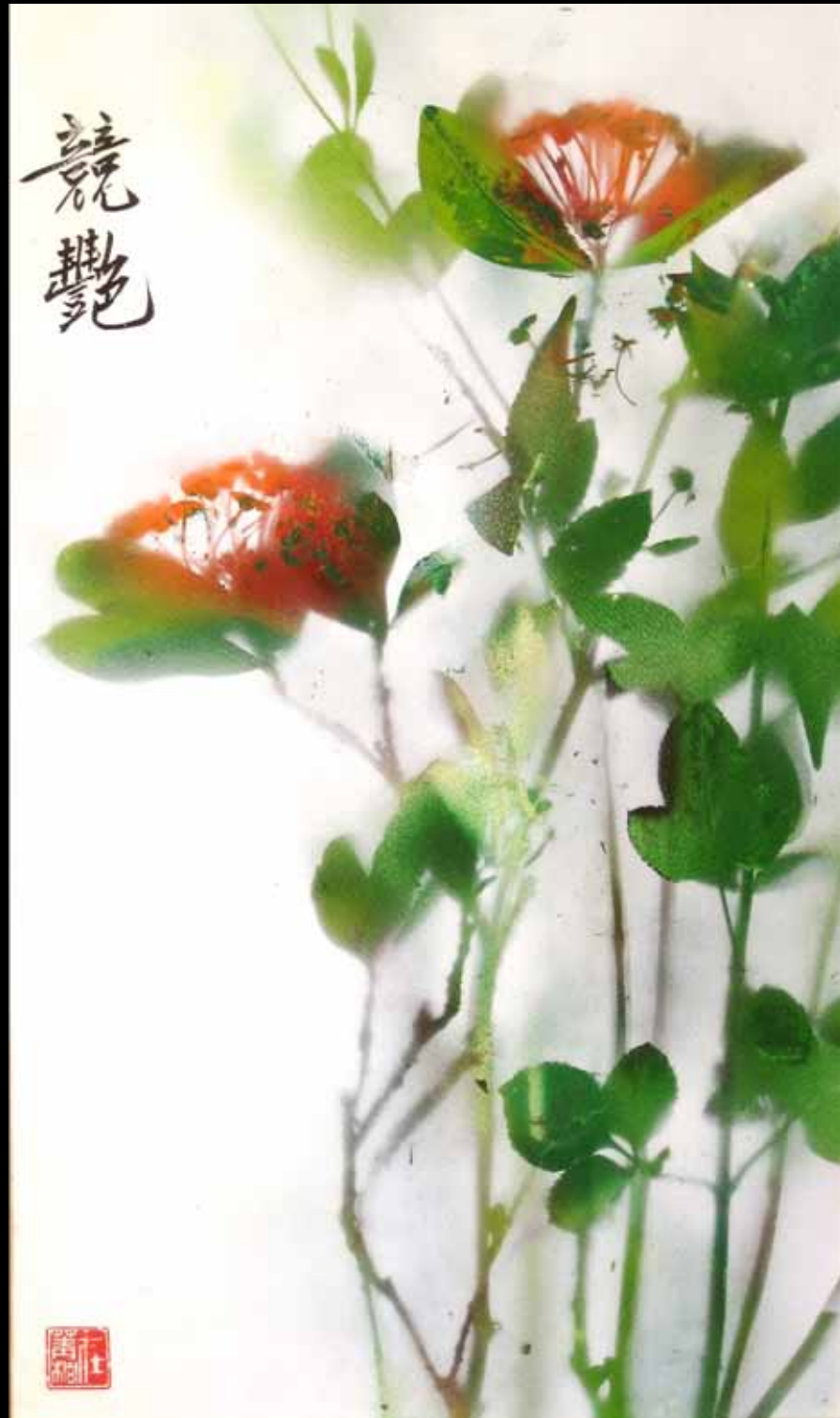
2003

Chingtong, Taiwan

Aerosol enamel and flowers on paper

.105 x .75 m

[[More Images](#)]



**Mountain Flowers; Maples Leaves; Ferns**

2003 Chingtung, Taiwan Aerosol enamel and flowers on paper

~38 x 23 cm ea.

[\[More Images\]](#)



**Taiwan Jungle**

2003

Chingtung, Taiwan

Spray enamel and flowers on paper

[\[More Images\]](#)



**Five Chingtong Plants**

2003 Chingtong, Taiwan

[\[More Images\]](#)

+ detail

Spray enamel and flowers on paper, mounted with silk hanging scrolls



**Kamongawa Weeds** - diptych

2000 Kyoto, Japan

Aerosol enamel and flowers on paper mounted in silk hanging scrolls

[More Images\]](#)

**Pine & Bamboo**

2003 Chingtung, Taiwan

**Palace Vines** - diptych

2002 Taipei, Taiwan



**100 Flowers**

1997 Penang, Malaysia Ink and colour on paper, vermilion seal prints, mounted with silk hanging scroll

[\[More Images\]](#)



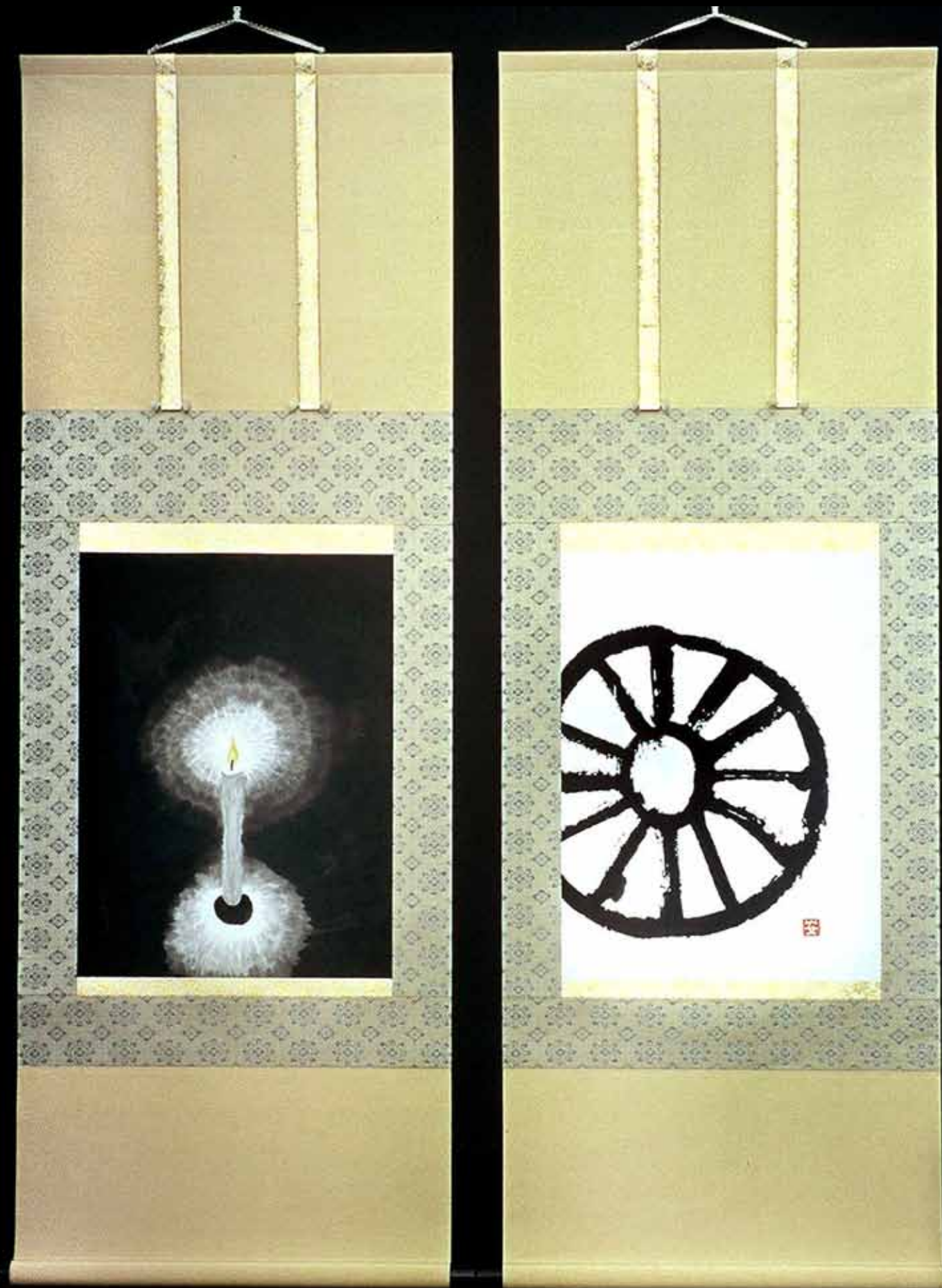
**Mountain Creek**

1997 Penang, Malaysia Ink and colour on paper, vermilion seal prints, mounted with silk hanging scroll



**Hybridizing the Four Noble Plants: Plumbao & Chrysathorchid - Diptych**  
1997 Seoul, Korea Ink and on paper, mounted with silk hanging scroll  
[\[More Images\]](#)

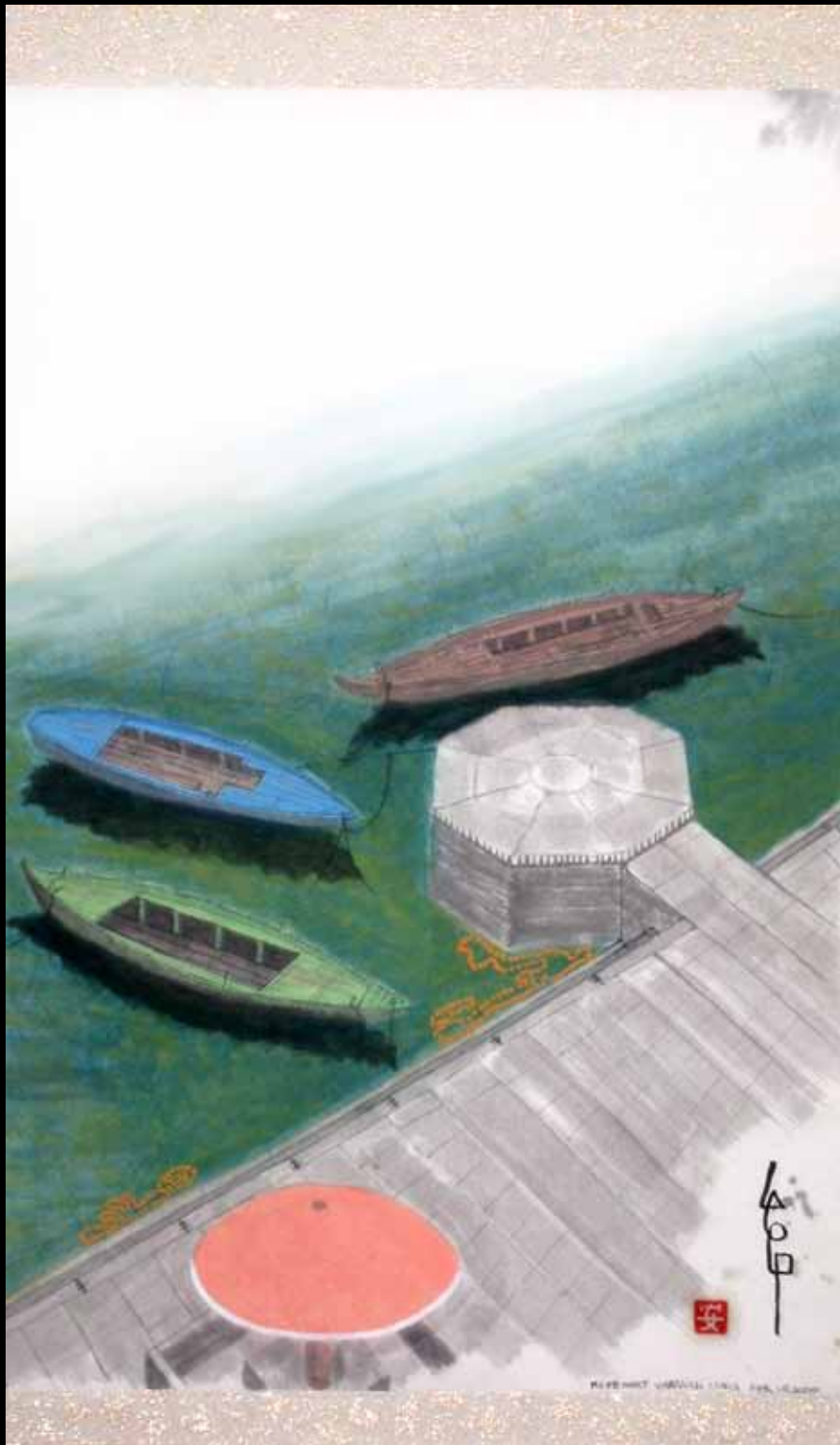
**Break the Wheel**  
2003 Taipei, Taiwan Ink and on paper, mounted with silk hanging scroll  
[\[More Images\]](#)



**The Candle & The Wheel** + detail

2000 Varanassi, India Ink on paper, vermillion seal prints, mounted with Japanese silk hanging scroll

[\[More Images\]](#)



**Ganges River Boats**

2000 India Ink and colour on paper, mounted with silk hanging scroll

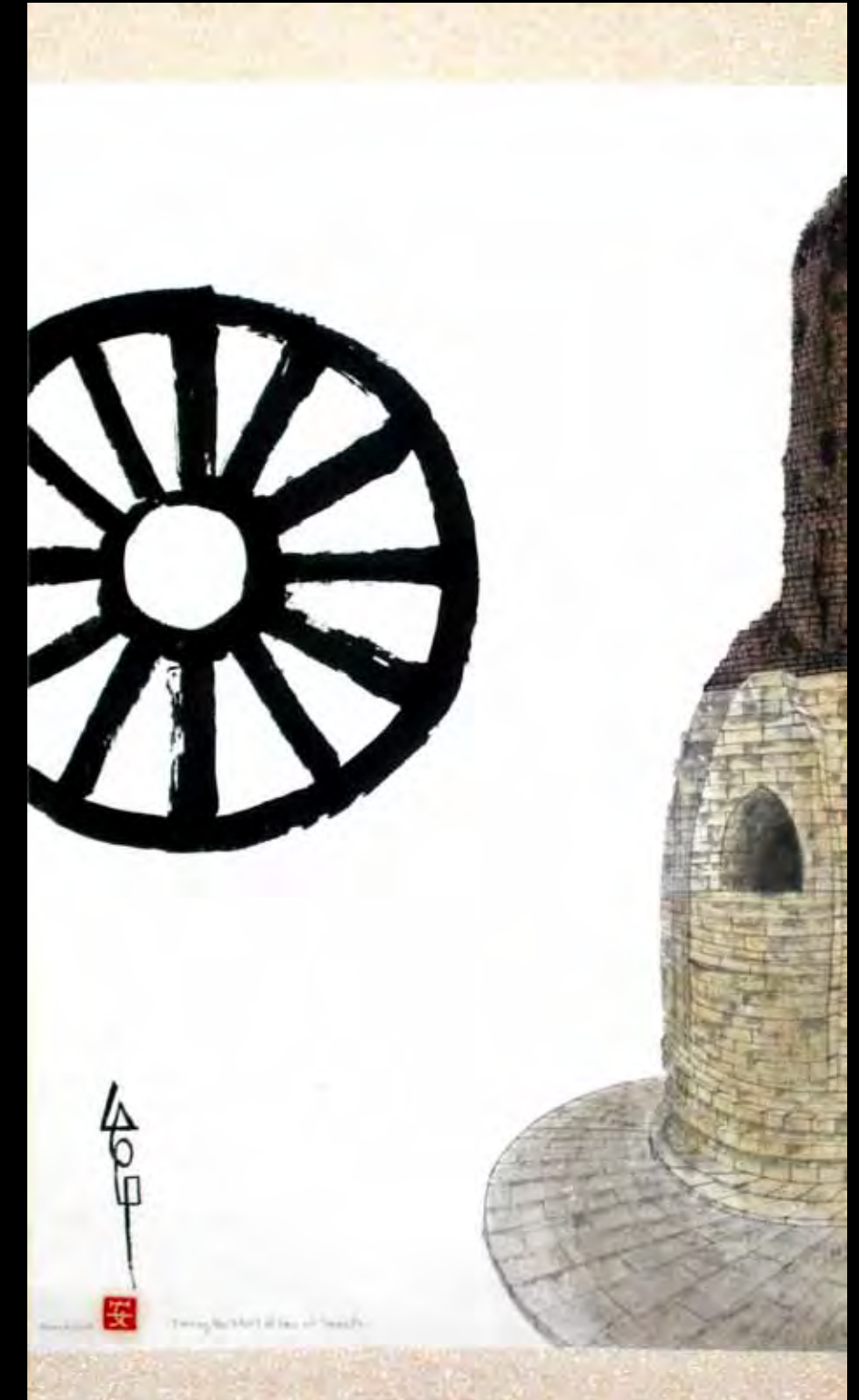
[\[More Images\]](#)



**Ganges Shoreline**

2000 India Ink and colour on paper, mounted with silk hanging scroll

[\[More Images\]](#)

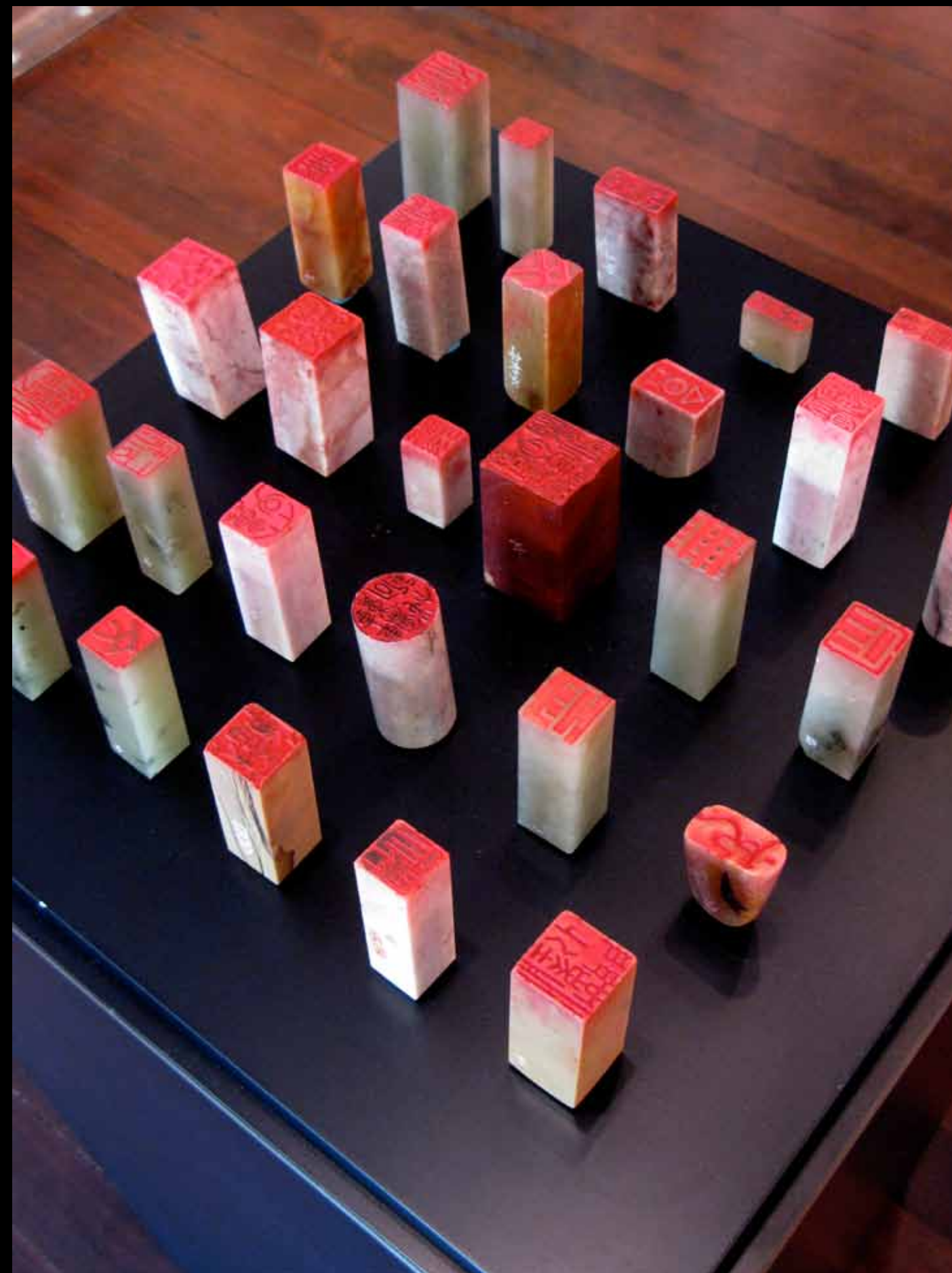
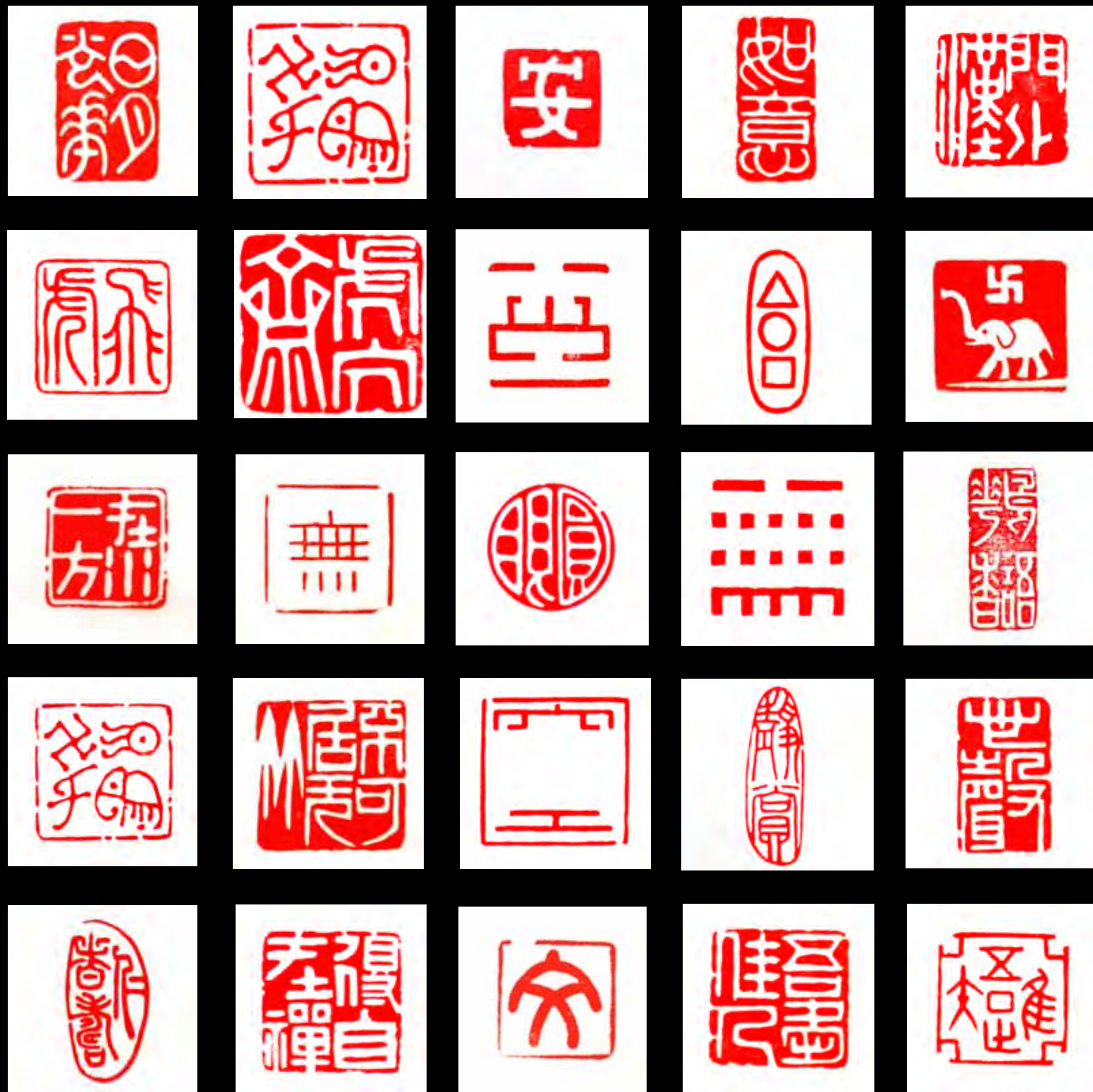


**Turning the Wheel of Law at Sarnath**

2000 India Ink and colour on paper mounted with silk hanging scroll

[\[More Images\]](#)

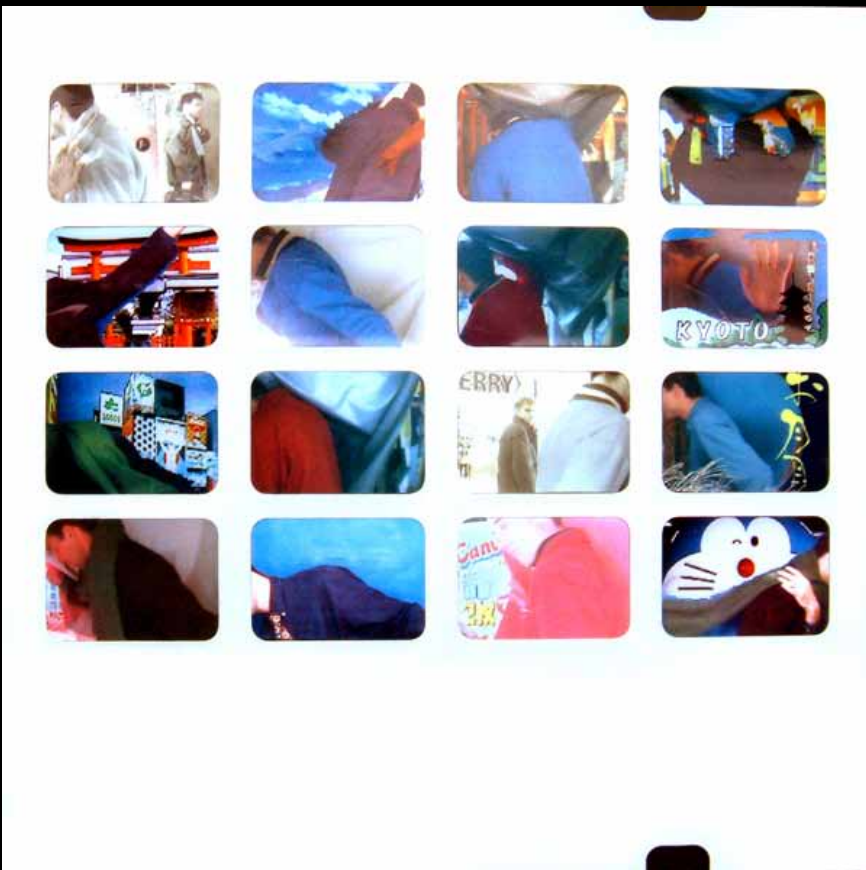




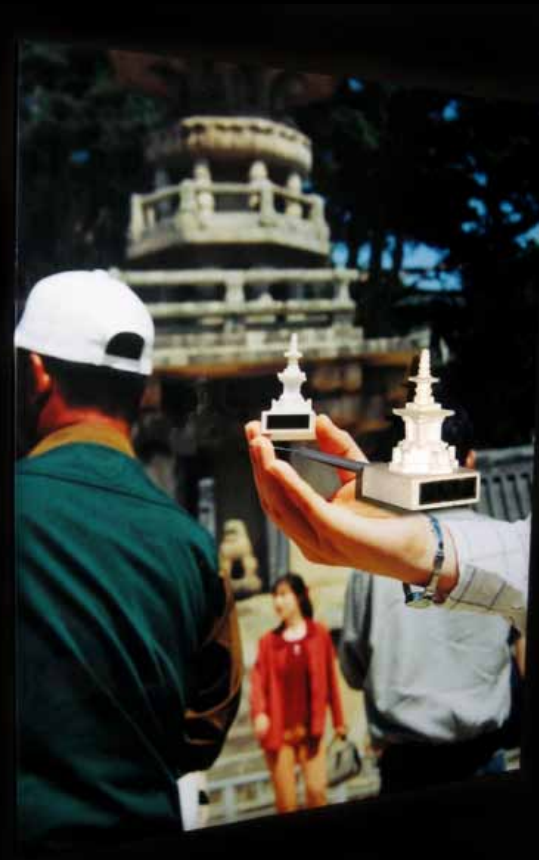
25 Seal Impressions (of a total 70 to date ) + exhibition installation  
 2001 - 04 Taipei, Taiwan Carved stone, vermilion on paper

[\[More Images\]](#)





**Automatic Landscapes** [Collapsing the Chasm Between Subject and Viewer; Allowing Content and Context to Become One] +detail  
 1997 - 2001      Korea + Japan      Repurposed digital photo-stickers      8 works total x 16, 1.5 x 2 cm images ea.      Each work: 11 x 11 cm / 4.33 x 4.33 in + 10X ink jet on laminated film enlargements: 1.10 x 1.10 m / 43 x 43 in  
[\[More Images\]](#)



**Globanality [On the Relentless Production of Cultural Simulacra Threatening to Obliterate the Sites of Desire]**

1996 - 2009

Word-wide

Souvenir objects and photographs mounted on panels

Each panel: 38 x 30 cm / 15 x 12 in

--- Overall installation x 50 panels: ~ 3.00 x 5.00 m / 118 x 197 in / ~10 x 16 ft

[\[More Images\]](#)



**Equator Art Experiment** [On Determining Which Direction Vortices of Water Flow When Directly Upon the Global Equator] (with Helen Cho)

1996 Global Equator, Sumatra, Indonesia

Photographic documentation, labeled equipment in case

Dimensions variable

[\[More Images\]](#)



**Framed Frame**

1996

Penang, Malaysia

Assorted ornamental frame moulding

[\[More Images\]](#)



**Corporate Korea**

1997

Seoul, Korea

Mixed media on card

[\[More Images\]](#)







**Don't Be Shy [The Shame of Loneliness]**

1998 Osaka, Japan

Large-scale ink jet print on signage canvas

[\[More Images\]](#)

# A01

## Andrew Owen A01 Creative Produce

### Excavating the Surface [Korea & India] 1996 - 2000

Artworks created while living and working in Korea and India, on and off from 1996 to 2001.

These Excavations evolved from the Excavations produced in Canada; whereas those in Canada are excavated from layers of vintage wallpaper, those in Korea and India are excavated from thick layers of poster hoardings harvested from the urban surface of large urban metropolises.

Systematically probing and revealing the various underlying strata of ephemeral images and information in a meticulous and time-consuming process akin to archaeological excavation: revealing the stratification of time and exposing the layering of past activities and events.

Creation by a subtractive process: nothing is added; only subtracted. Creating artefacts of beauty, historical curiosity and artistic value by carefully removing layers from abandoned ephemera.

Copyright©AndrewOwen2012  
[[www.A01creative.com](http://www.A01creative.com)]



**Flesh Peekaboo**

1997

Seoul, Korea

Excavated found Korean porno poster hoarding

[[More Images](#)]



**Flesh Flowers I**

1997 Seoul, Korea

Excavated found Korean porno poster hoarding

[\[More Images\]](#)



**Flesh Bamboo I**

1997 Seoul, Korea

Excavated found Korean porno poster hoarding

[\[More Images\]](#)



**Flesh Grapes**

1998

Seoul, Korea

Excavated found Korean porno poster hoarding

[\[More Images\]](#)



**Flesh Fish I**

1997

Seoul, Korea

Excavated found Korean porno poster hoarding

[\[More Images\]](#)



**Flesh Dried Seafood**

1998 Seoul, Korea

Excavated found Korean porno poster hoarding

[More Images](#)



**Flesh Time Travel - diptych**

1997 Seoul, Korea

Excavated found Korean porno poster hoarding

[More Images](#)



**FLESH OF BIRTH**

다니엘 맥비카/메니티/마일스 오브라이언

**Flesh of Birth**

1997 Seoul, Korea

[More Images](#)



**The Well & The Hearth** - diptych

1996

Udaipur, India

Excavated Hindi movie poster hoarding

[\[More Images\]](#)



**Stomach & Intestines**  
2000 Udaipur, India Excavated Hindi movie poster hoarding  
[\[More Images\]](#)



**Udaipur Scene**  
2000 Udaipur, India Excavated Hindi movie poster hoarding  
[\[More Images\]](#)

# A01

## Andrew Owen A01 Creative Produce

### Layers of Reading Paintings & Excavations 1992 - 1995

Artworks created in Toronto, Canada, from 1992 to 1995, just preceding departure for a decade of living and working abroad in North East Asia.

Informed by years of formally studying Chinese ink painting under a master in Canada, and informal studies during travels in Japan and China.

Light On Dark are painting images of natural subjects in a Chinese style, but in reverse. Rather than dark tones on a white, featureless ground, these works are painted with reflective gold, silver, bronze and copper metallic paints onto layers of complex commercial imagery produced during the proofing process of commercial billboard printing.

Layers of bright and serene, hand-painted natural imagery contrasts the layers of dark and complex mechanically printed commercial imagery.

Copyright©AndrewOwen2012  
[ [www.A01creative.com](http://www.A01creative.com) ]

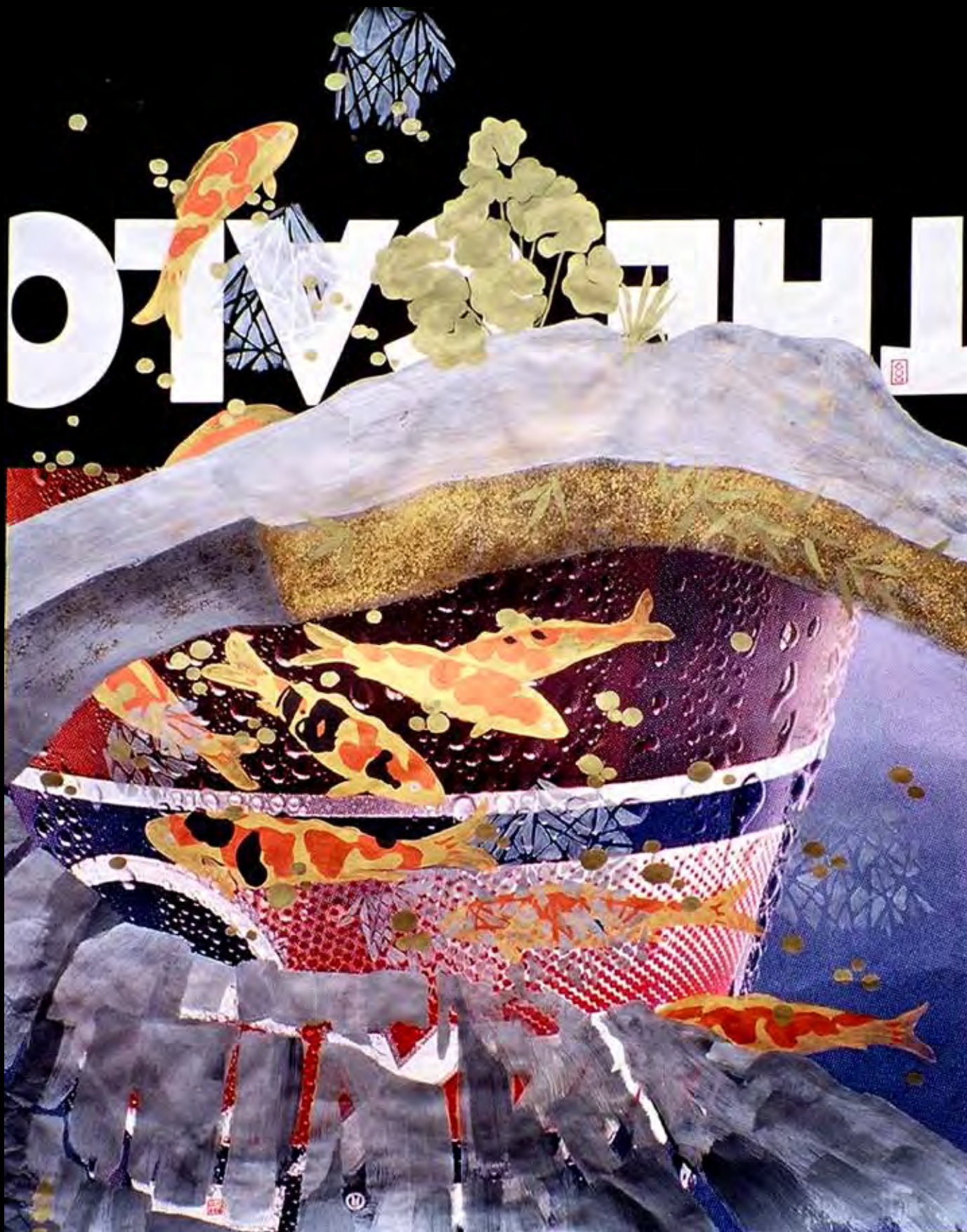


**Light on Dark [Ferns/Pepsi]**

1994 - 5 Toronto, Canada

[ [More Images](#) ]

Gold, silver, bronze, and copper metallic acrylic paints 48 x 36 in.  
on commercial billboard proof prints



**Light on Dark [Stone Bridge/Fish/Pepsi]**

1994 - 5 Toronto, Canada

Gold, silver, bronze, and copper metallic acrylic paints 48 x 36 in.  
on commercial billboard proof prints

[\[More Images\]](#)



**Light on Dark [Pine/Fish/Car]**

1994 - 5 Toronto, Canada

Gold, silver, bronze, and copper metallic acrylic paints 48 x 36 in.  
on commercial billboard proof prints

[\[More Images\]](#)



**Light on Dark [Camellia/Frog/Mr. Sub]**

1994 - 5 Toronto, Canada Gold, silver, bronze, and copper metallic acrylic paints 36 x 48 ft.  
on commercial billboard proof prints

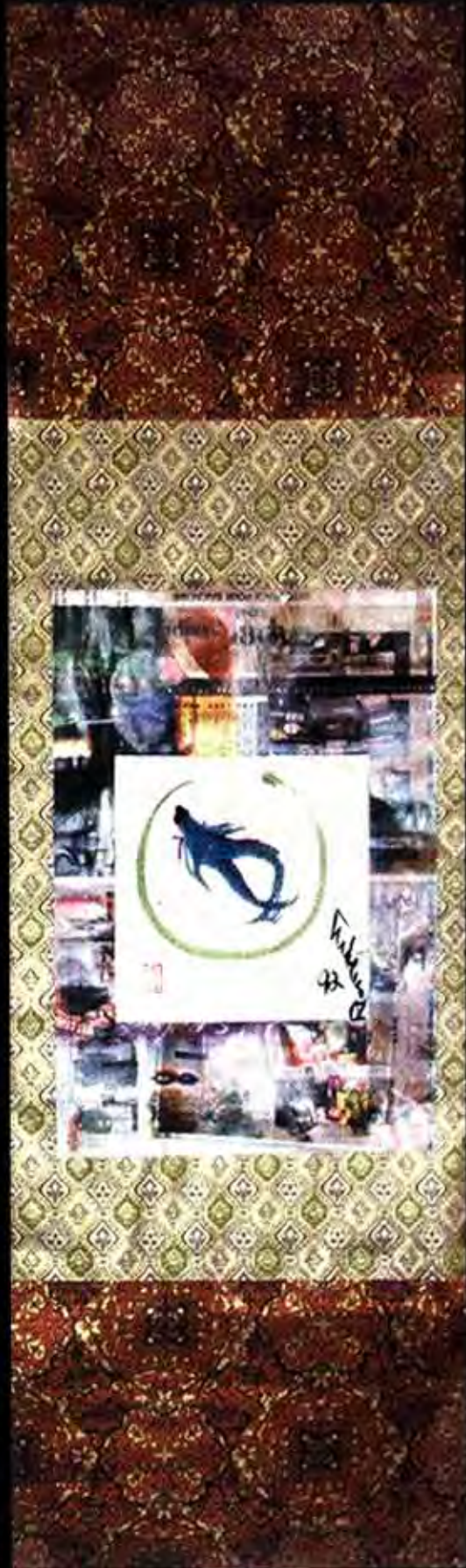
[\[More Images\]](#)



**Light on Dark [Grapes/Quebec]**

1990 - ongoing Toronto, Canada Gold, silver, bronze and copper metallic acrylic paints 36 x 48 ft.  
on commercial billboard proof prints

[\[More Images\]](#)



**Wallpaper Scrolls**

1993 - 4

Toronto, Canada

Ink and colour on paper; metallic acrylics on paper, mounted with wallpaper hanging scrolls

[\[More Images\]](#)

**Four Seasons Wall Paper Excavations** [Exhibition/Performance at U of T Architecture]

1993

Toronto, Canada

Excavated wallpaper

[\[More Images\]](#)



**Four Seasons Wall Paper Excavations [Autumn/Chrysanthemum]** + detail  
1993 Toronto, Canada Excavated wallpaper 2.44 x 1.37 m / 96 x 54 in / 8 x 4.5 ft each panel

[\[More Images\]](#)



**Four Seasons Wall Paper Excavations** [Winter/Pine; Spring/Iris & Lilies; Summer/Bamboo & Grapes]  
1993 Toronto, Canada Excavated wallpaper 2.44 x 1.37 m / 96 x 54 in / 8 x 4.5 ft each panel

# A01

## Andrew Owen A01 Creative Produce

### Commodification of Nature EnvironMental Produce 1988 - 1993

Artworks created in collaboration with Jamie Osborne in Toronto, Canada from 1988 to 1993.

Informed by Japanese pop and commercial culture experienced during two trips to Japan in '88 and '90, and the general excesses of the late 80's.

Andrew Owen and Jamie Osborne worked together for eight years. Their company DecorAction Systems produced large-scale pop art décor for Toronto's major nightclubs, and large-scale outdoor advertisements for major brand-name commercial clients.

The lucrative business division funded the creative research division EnvironMental Produce to create and exhibit a series of art projects employing the vernacular of commercial culture to playfully critique the commodification of art and the natural world.

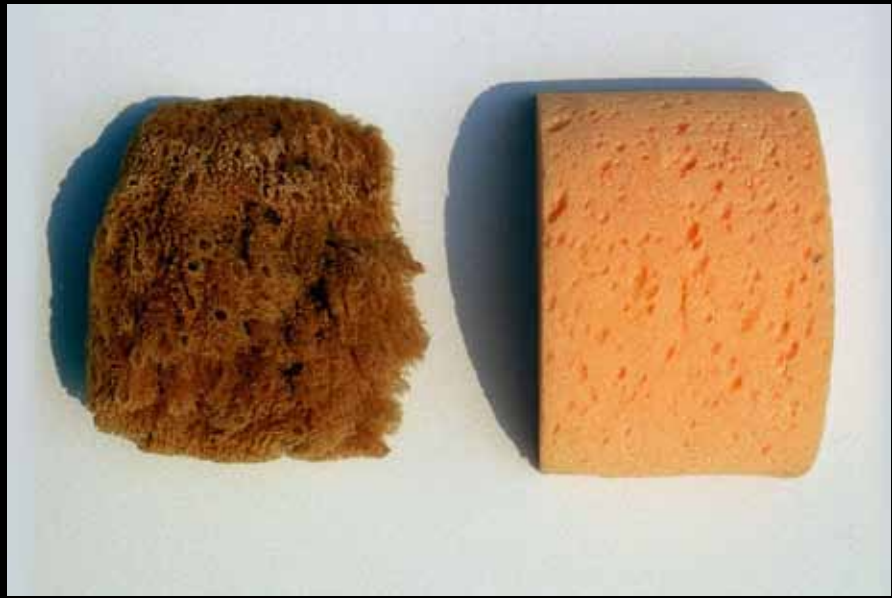
Copyright©AndrewOwen2012  
[www.A01creative.com]



Jamie Osborne & Andrew Owen A01 [EnvironMental Produce at Reactor Gallery]

1990 Toronto, Canada

[More Images]



**Echoes [Natural & Synthetic Produce]**

1990 - ongoing Toronto, Canada

Natural materials and their synthetic analogues on ceramic tiles

Dimensions variable

[\[More Images\]](#)



**National Produce Souvenirs: Canada #1 Pinecone; Canada #1 Coal; Canada #1 Wheat; Canada #1 Burdock**

1990 Toronto, Canada Natural materials, custom vacu-form plastic packaging, m/m

[\[More Images\]](#)

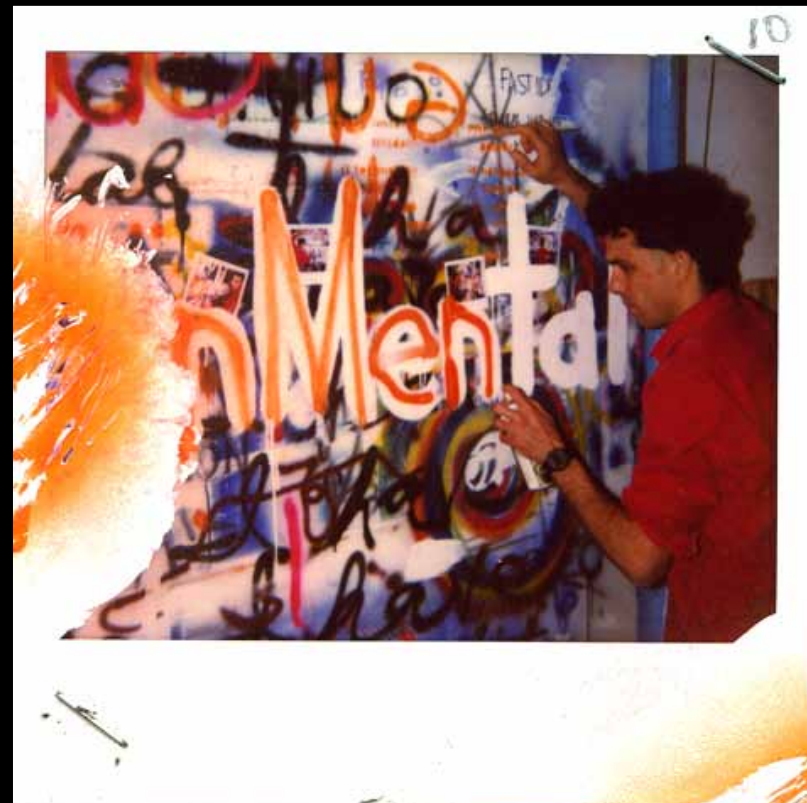
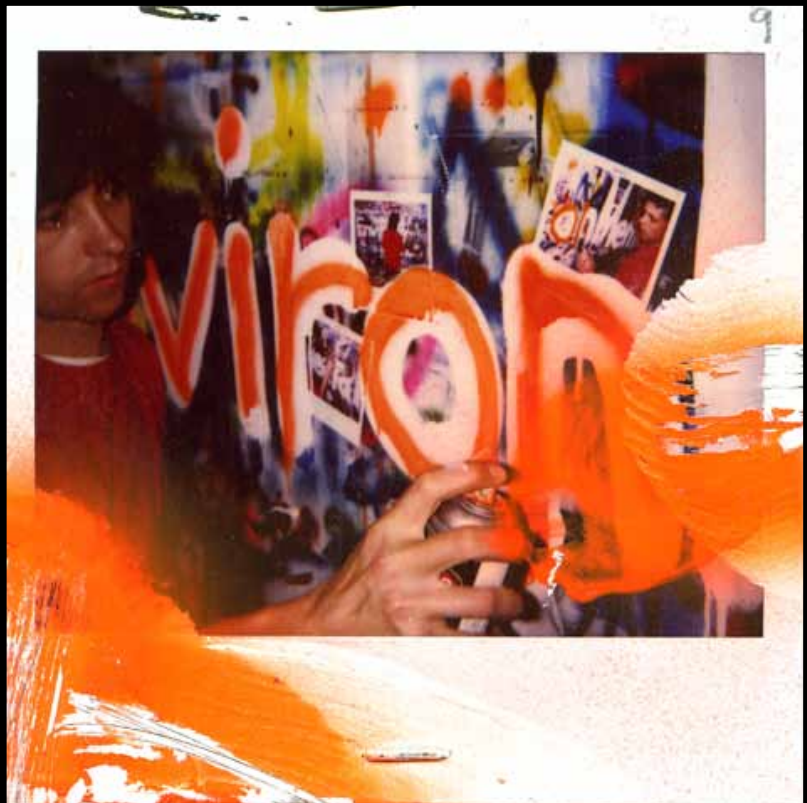
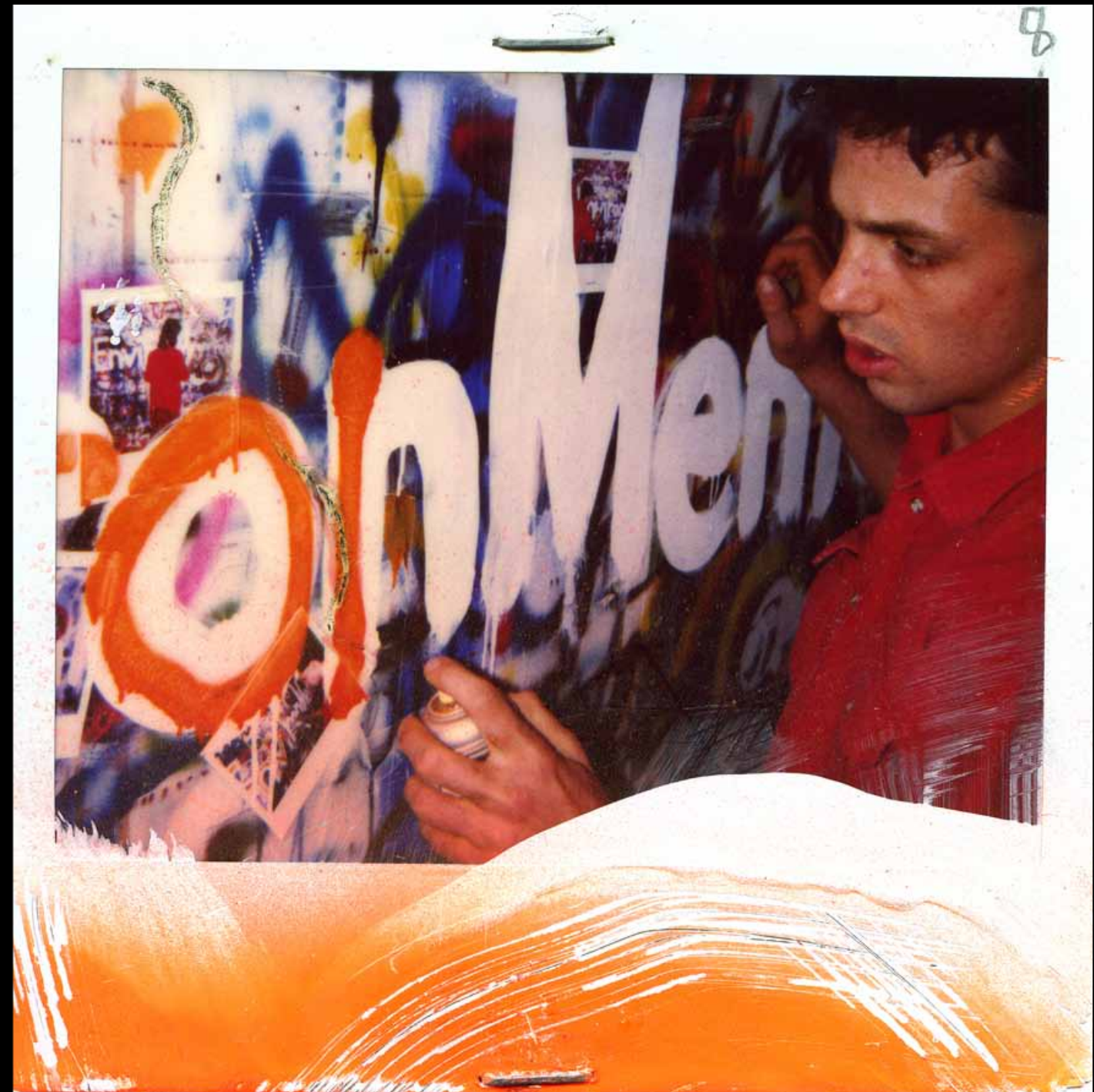


**EnvironMental Produce: Echoes; Plastic Dandelions for Astroturf; Packaged Itself**  
1990 Toronto, Canada Mixed media, custom vacu-form plastic packaging  
[\[More Images\]](#)



**Artomatic [Art Produce Vending System] Installation at CITY TV Gallery; Artomatic window; A01Texture Book**  
 1990 Toronto, Canada Re-purposed vending machine, packaged artwork products

[\[More Images\]](#)



**EnvironMental Re-photographic Polaroid Painting Sequence** (with Jamie Osborne)

1989 Toronto, Canada

Sequence of 10 Polaroid photographs, staples, white latex paint, orange aerosol enamel

[\[More Images\]](#)



**Processpaintings: Jumpin' Trout; Fruit Group; Fruit Group - detail**  
1988 Toronto, Canada Aerosol process colour acrylic inks on panel  
[\[More Images\]](#)



**Concrete Pylon Stool & Picket Fence Chair**

1988 Toronto, Canada Astroturf, concrete, wood, steel fixtures

[\[More Images\]](#)



**Astroturf Lined Teacup**

1988 Toronto, Canada Astroturf, teacup, saucer, spoon

[\[More Images\]](#)



**Astroturf Yen Poptart** [Remote Control artists fashion show Art Gallery of Ontario  
1988 Toronto, Canada Astroturf, t-shirt, mini-skirt

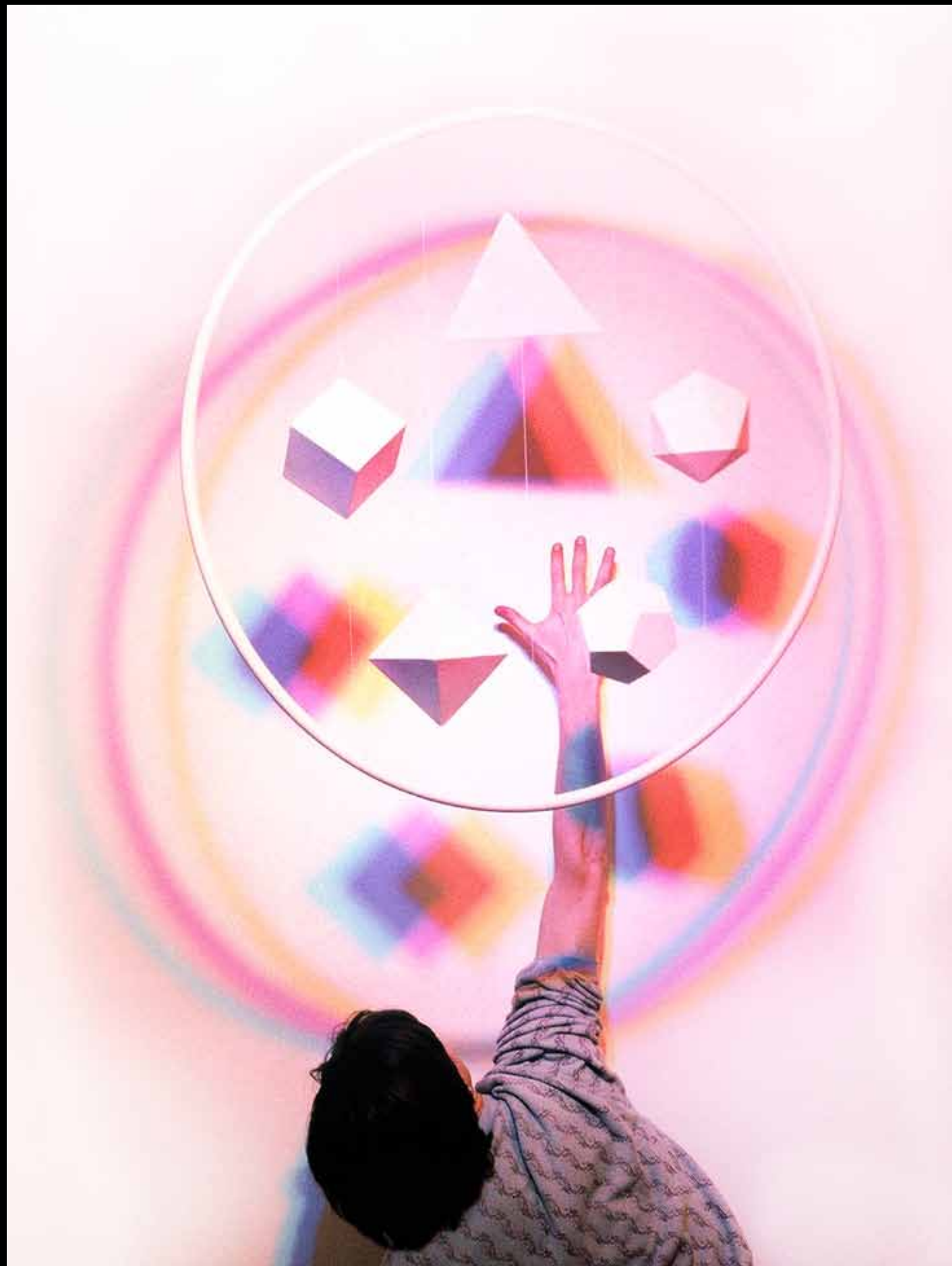
[\[More Images\]](#)



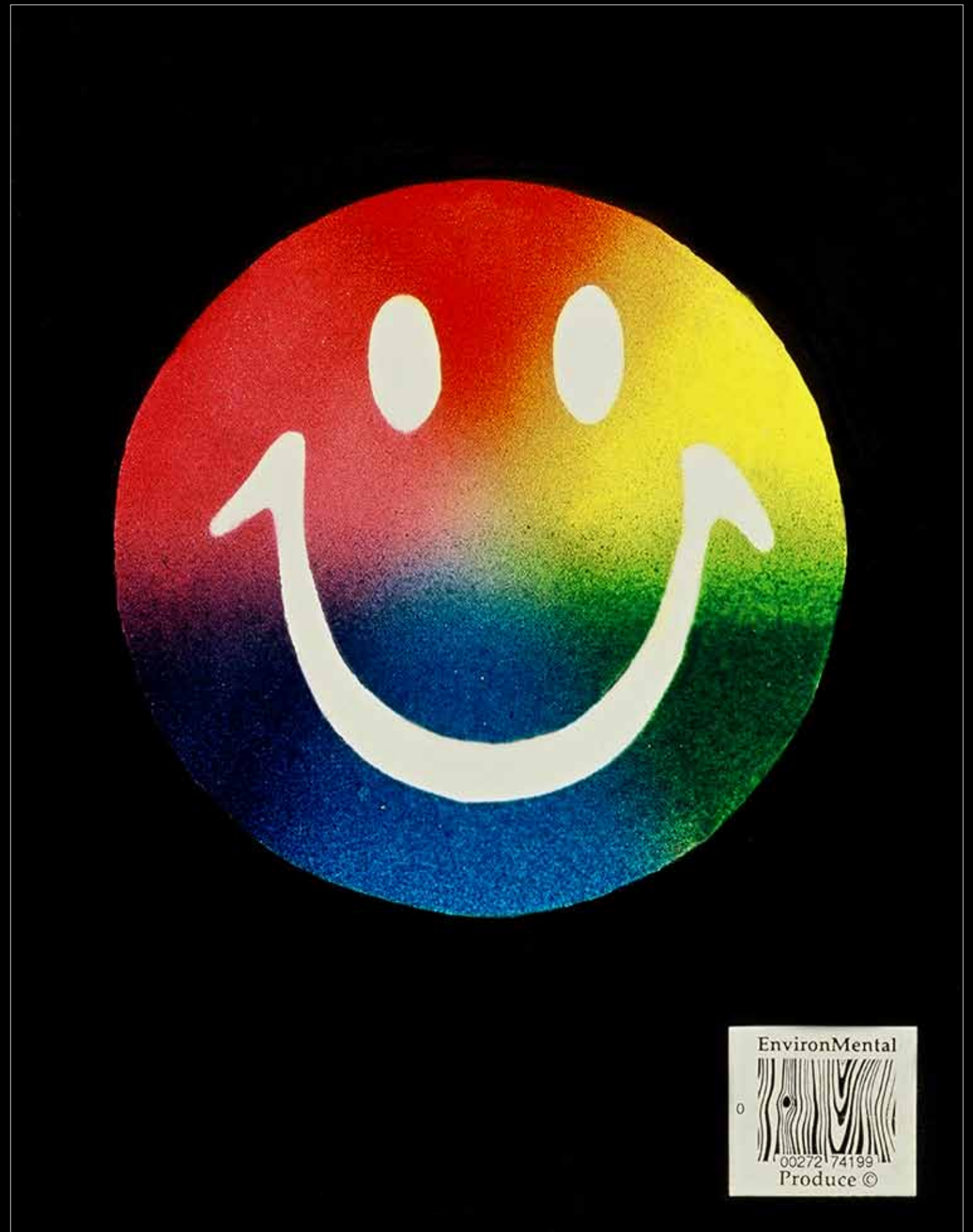
**Woodgrain Birch-bark Bikini Babe**  
1988 Toronto, Canada

Acrylic paint, birch-bark, model

[\[More Images\]](#)



**R G B 1 2 3** [Platonic polyhedra mobile & primary colour lighting installation]  
1988 Toronto, Canada Mixed media mobile, three colour additive lighting track  
[\[More Images\]](#)



**Colourwheel Happyface**  
1988 Toronto, Canada Aerosol acrylic on paper  
[\[More Images\]](#)



# A01

## Andrew Owen A01 Creative Produce

Transforming Inorganic  
1985 - 1988

Artworks created in Toronto, Canada from 1985 to 1988, before influence from travels in Japan and China.

Informed by living and working in warehouse buildings in former industrial area of Toronto, and the ruins of the Post-industrial era.

Transforming heavy and inorganic construction materials such as brick, concrete, plaster, lumber and gravel into gravity-defying garden-like forms to express the organic and decorative potential of inorganic, non-decorative materials.

Copyright©AndrewOwen2012  
[[www.A01creative.com](http://www.A01creative.com)]



**Wall Paper Fruit**

1987 Toronto, Canada

Excavated wallpaper and plaster on wood wall lathe

[[More Images](#)]



Wall Paper Iris + detail  
1987 Toronto, Canada

Excavated wallpaper and plaster on wood wall lathe

[\[More Images\]](#)



**Wall Paper Fish & Shrimp; Wall Paper Fruit II**

1986 Toronto, Canada Excavated wallpaper and plaster on wood wall lathe

[\[More Images\]](#)



**A Ruin A Rose**

1986

Toronto, Canada

Mixed media construction materials on panel

[\[More Images\]](#)



**Architorture Deconstruction** [Installation at Garnet Press Gallery]  
1986 Toronto, Canada Mixed media construction materials  
[\[More Images\]](#)



**Architorture Deconstruction** [Installation at Garnet Press Gallery - detail]  
1986 Toronto, Canada Mixed media construction materials  
[\[More Images\]](#)



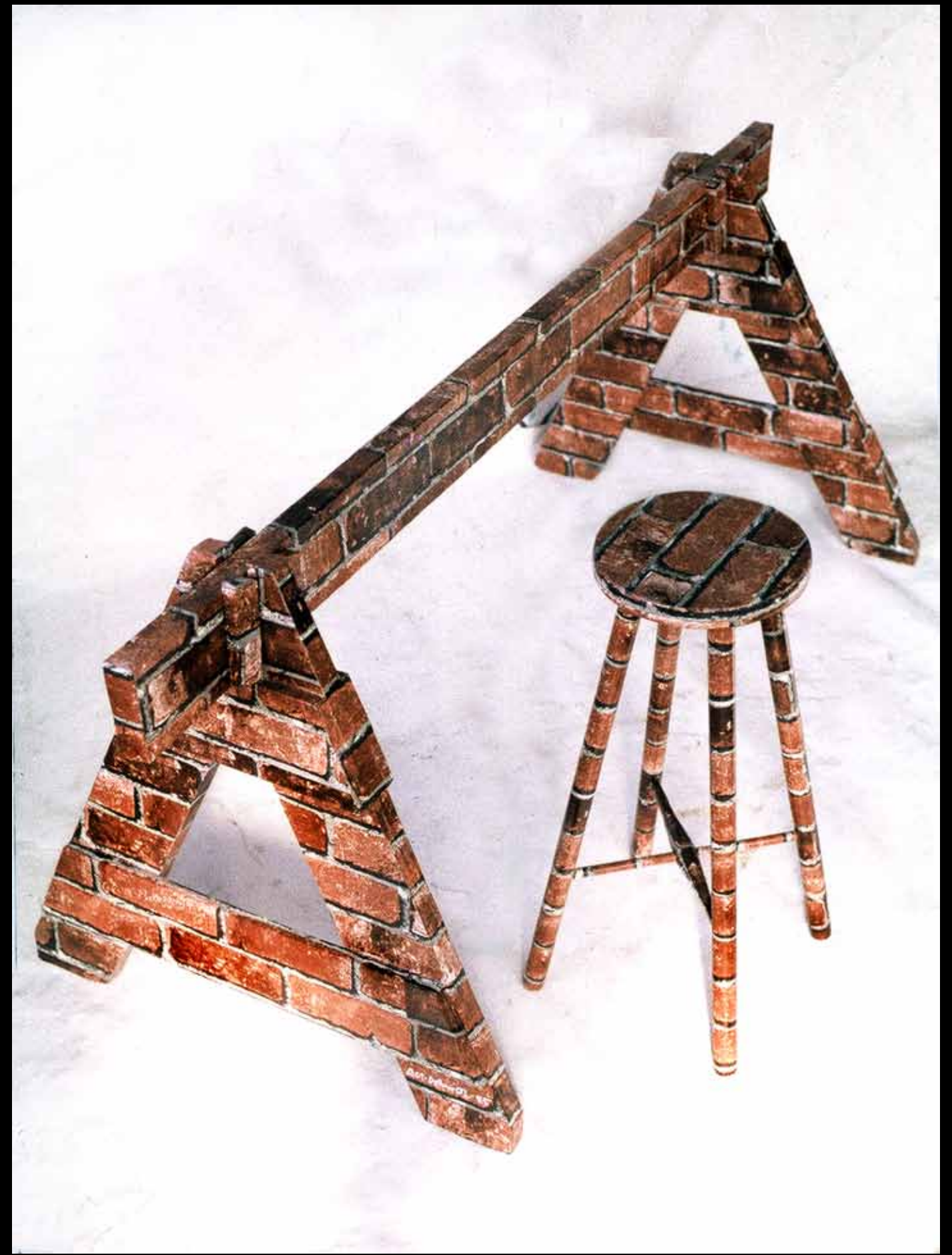
**Architorture Deconstruction** [Installation at Convertible Showroom (Pumps & Power) Gallery , Vancouver (\*Note Attila Richard Lucaks, Angela Grossmann and Derek Root)]

1986 Vancouver, Canada Mixed media construction materials

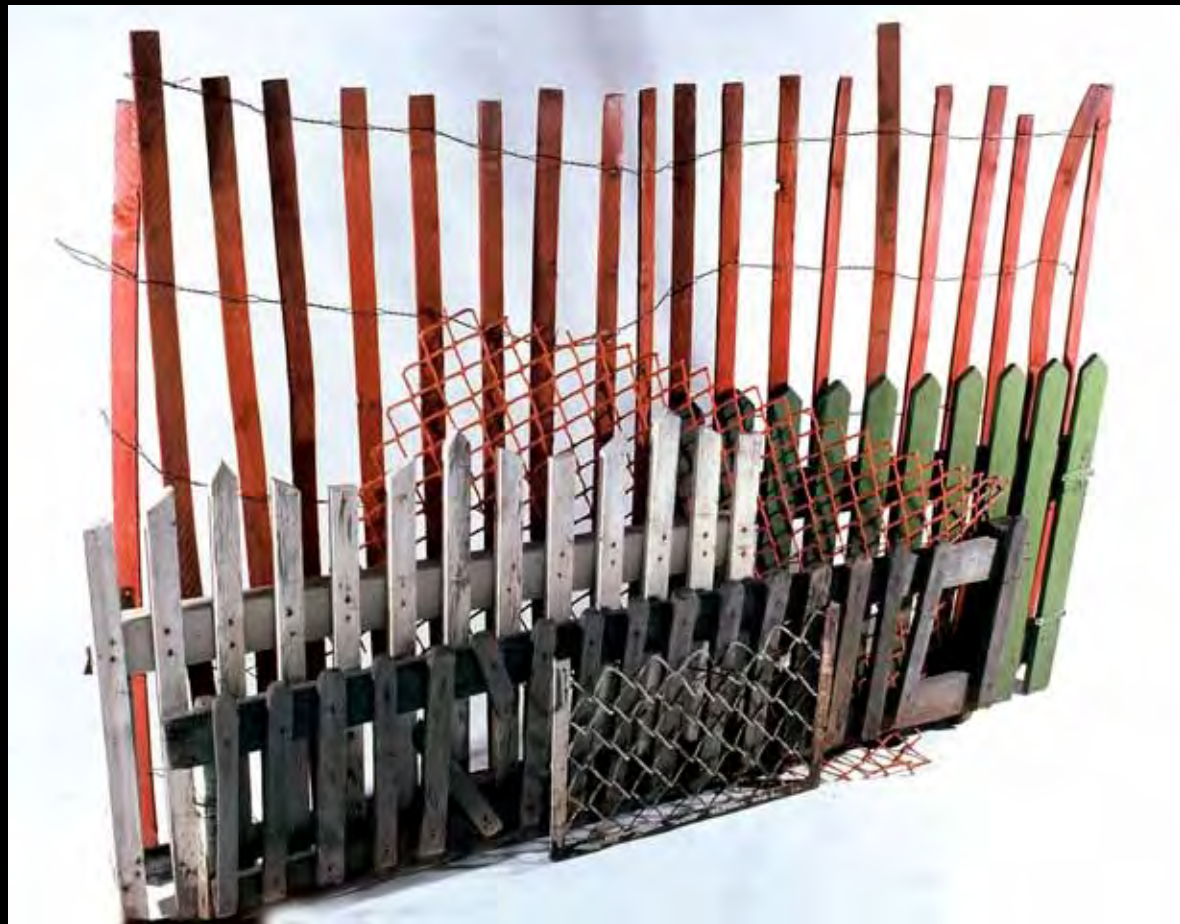
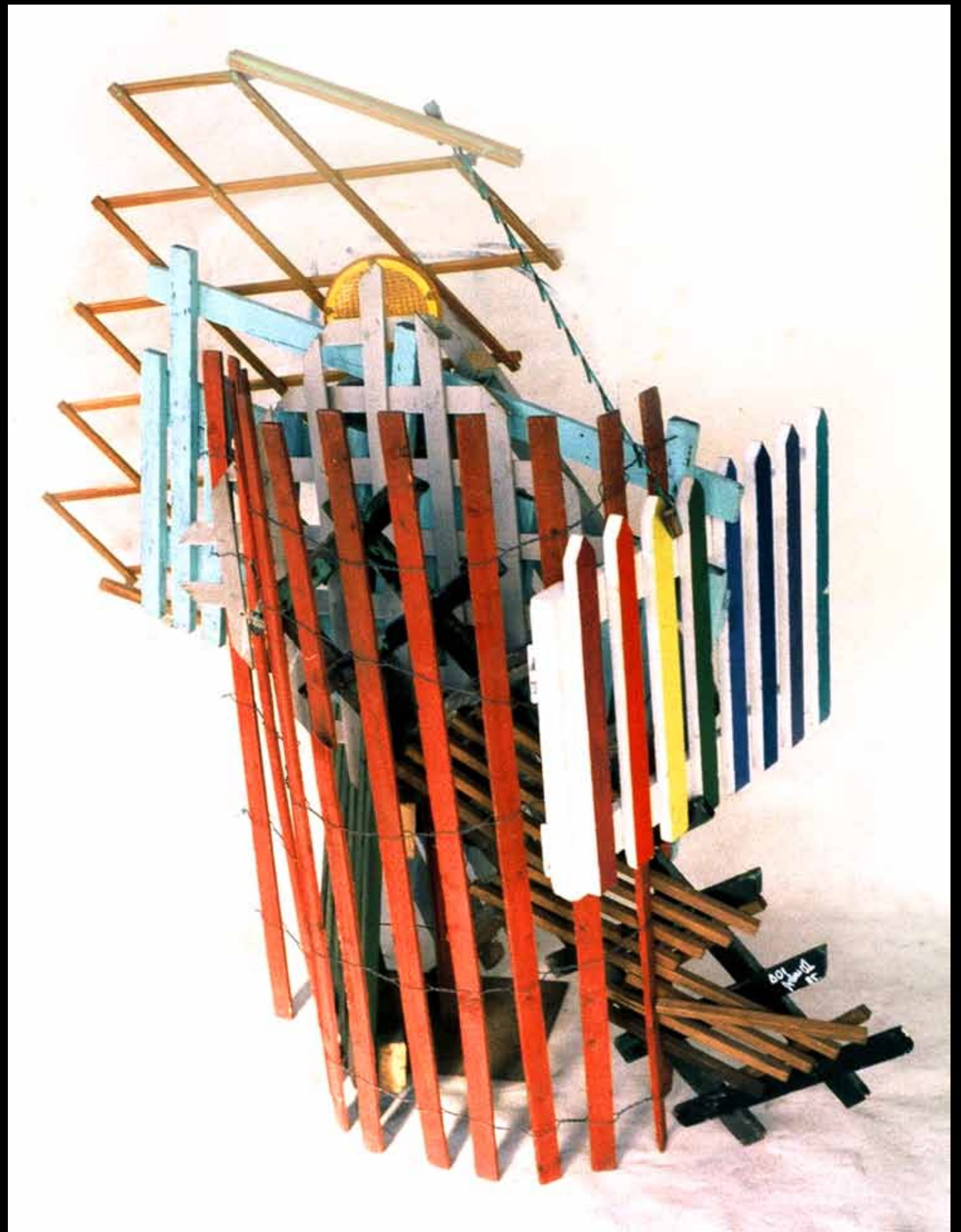
[\[More Images\]](#)



**The Venus Suit [Manifestation of Sexual Symbology in the Business Environment]**  
1986 Toronto, Canada Acrylic paint and human hair on men's suit jacket, vest and tie  
[\[More Images\]](#)



**Brick Barricade & Brick Stool**  
1988 Toronto, Canada Wallpaper on wood, Varathane  
[\[More Images\]](#)



**Defences**

1985 - 6

Toronto, Canada

Mixed media fencing

[\[More Images\]](#)



**Defences**

1985 - 6

[\[More Images\]](#)

Toronto, Canada

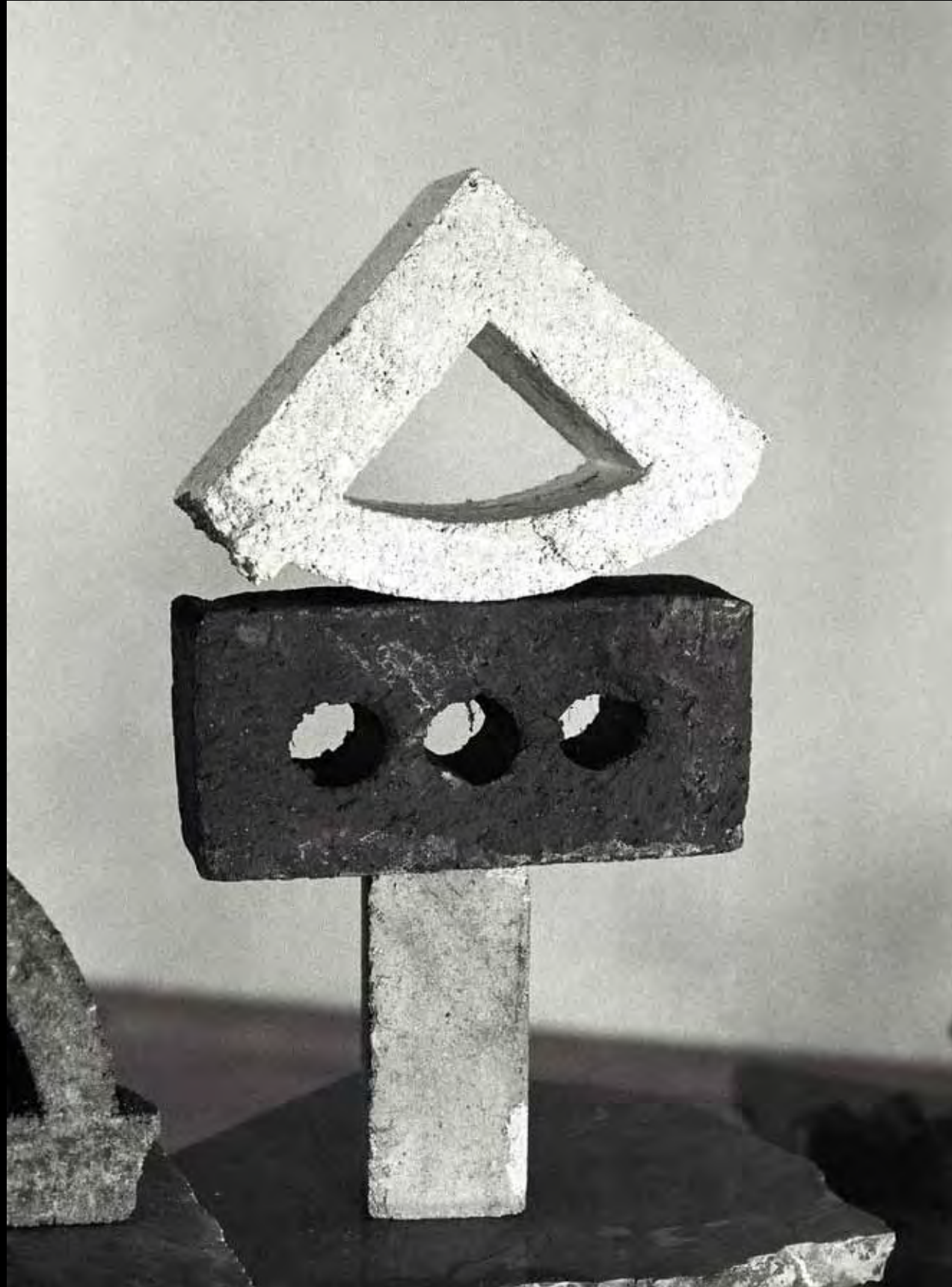
Mixed media fencing



**Hard Kite I** + Hard Kite installation in tree  
1985 Toronto, Canada

Plexiglas, mixed media meshing

[\[More Images\]](#)



**A01**

**Andrew Owen A01  
Creative Produce**

**C O N T A C T**

**Andrew Owen A01**

Web [www.a01creative.com](http://www.a01creative.com)

Email [andrew\\_a01@yahoo.ca](mailto:andrew_a01@yahoo.ca)

Toronto +1.647.770.0885