

A01

Andrew Owen A01 Creative Produce

A01 ART 2011 PDF

This **A01 ART 2011 PDF** presents a selection of images and information regarding four series of artwork by the visual artist Andrew Owen A01.

A01 ART 2010 PDF is best viewed with [Adobe Reader](#) in Full Screen Mode, using arrow keys to page through the document.

A01 ART 2010 PDF is produced for transmission by standard e-mail, and is also suitable for draft printing at 11 x 17 inch or A3 size.

Additional images can be viewed via the blue text hyperlinks embedded in this document.

High-resolution images suitable for publication are available upon request.

Additional versions of **A01 ART PDF** that include different series of artwork (below) are also available upon request.

- Excavations [Korea/India '95 - '00]
- Impressions [Korea/Japan/Taiwan '96 - '05]
- EnvironMental Produce [Canada '87 - '92]
- Deconstructions/Excavations [Canada '85 - '87]

Copyright©AndrewOwen2011
[\[www.A01creative.com\]](http://www.A01creative.com)

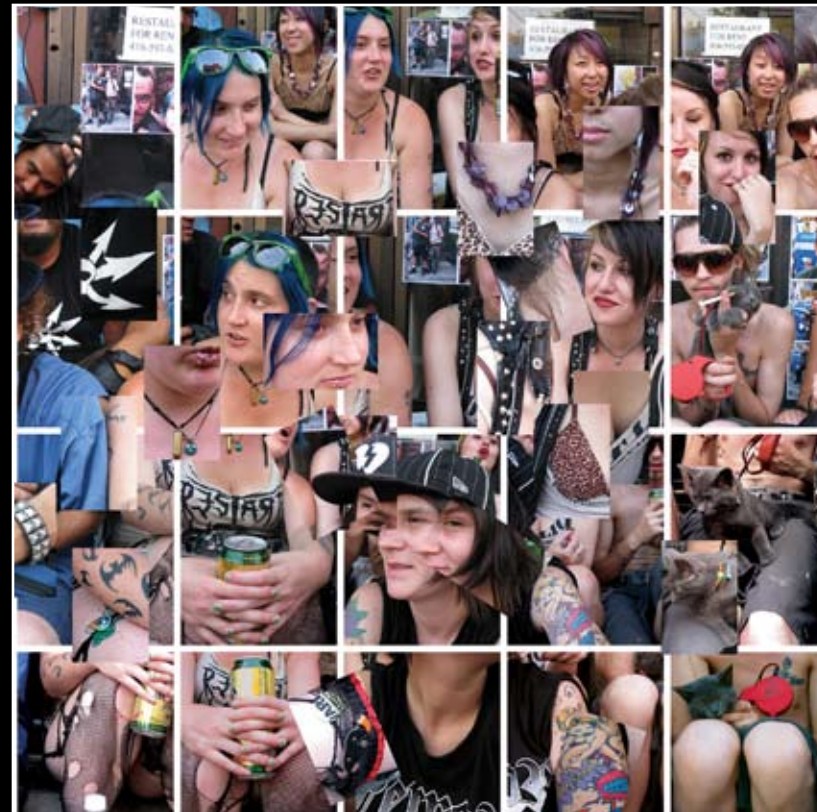


Photo-cubic Portrait Tableaux



Photo-based Artworks



Excavations [Vancouver]



Impressions [Canada]

A01

**Andrew Owen A01
Creative Produce**

Photo-cubic Portrait Tableaux

Larger-than-life photographic tableaux assembled from arrangements of hundreds of multiple format photographic prints, each shot at life-size 1:1-scale, with a multitude of perspectives, locations and time frames, thereby extruding subjects out to multidimensional hyperspace.

Meta-photography that strategically foregrounds the act of photographic representation, to critique and transcend the implied technical objectivity that corrupts conventional singular-view photography.

Depicting a multiplicity of views, diversity of persona, range of moods and live actions unfolding over time that are naturally expressed by living people within a scene, towards expressing a non-static, almost filmic expression of dynamic life.

A program informed by reexamining early Korean multiple-perspective still-life painting, the Cubism of Picasso and Duchamp on the centenary of its fluorescence, and explorations by Hockney, Snow, and Gilbert & George at the end of Modernism, towards evolving a visual vernacular for the early 3rd Millennium.

Copyright©AndrewOwen2011
[www.A01creative.com]

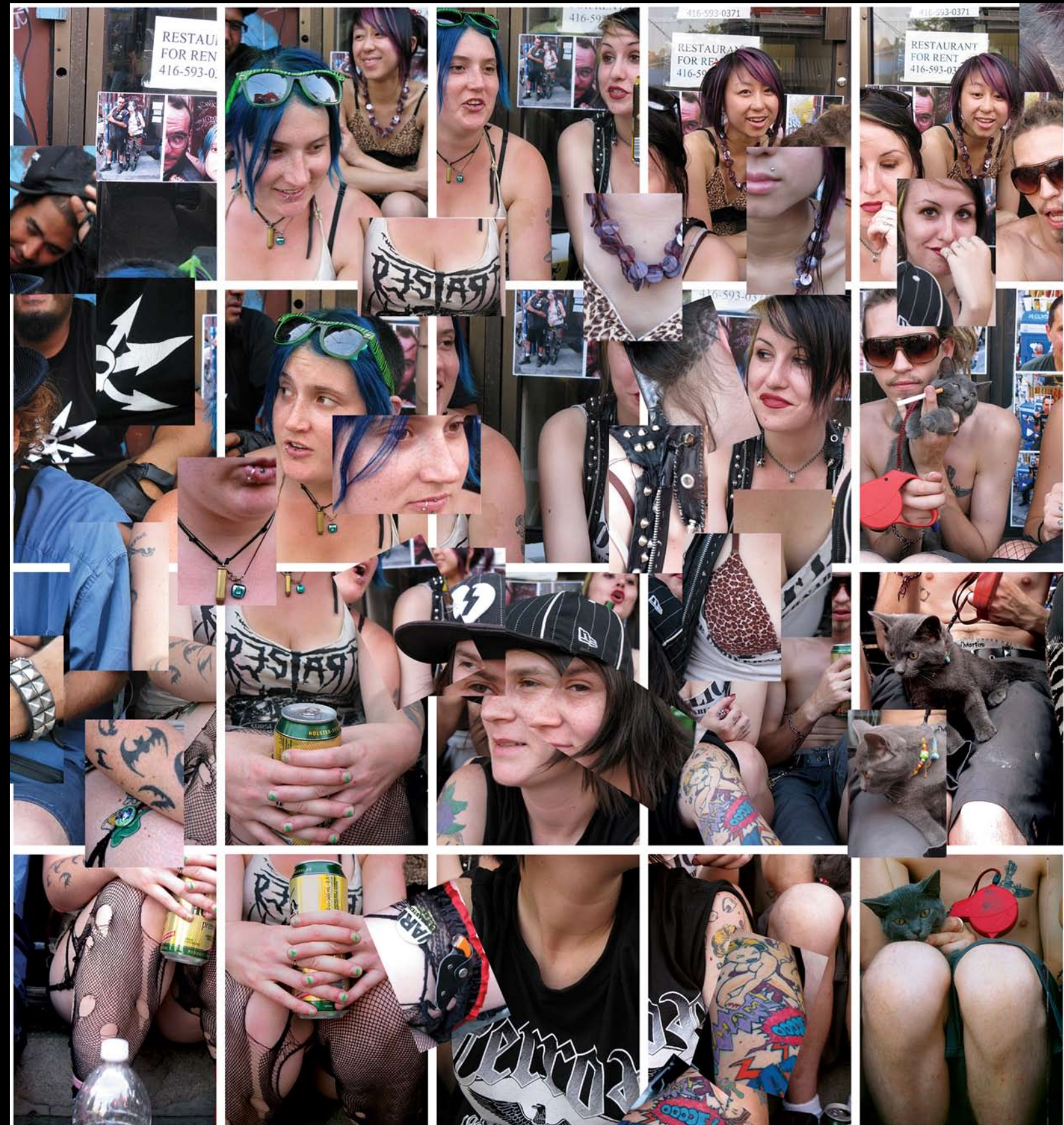


Photo-cubic Stoop Punks: Portrait Tableau - DETAIL

2009 - 10

Toronto - Vancouver, Canada

2.06 x 3.66 m / 81 x 144 in / 6.75 x 12 ft

Multiple format photographic prints

[More Images]

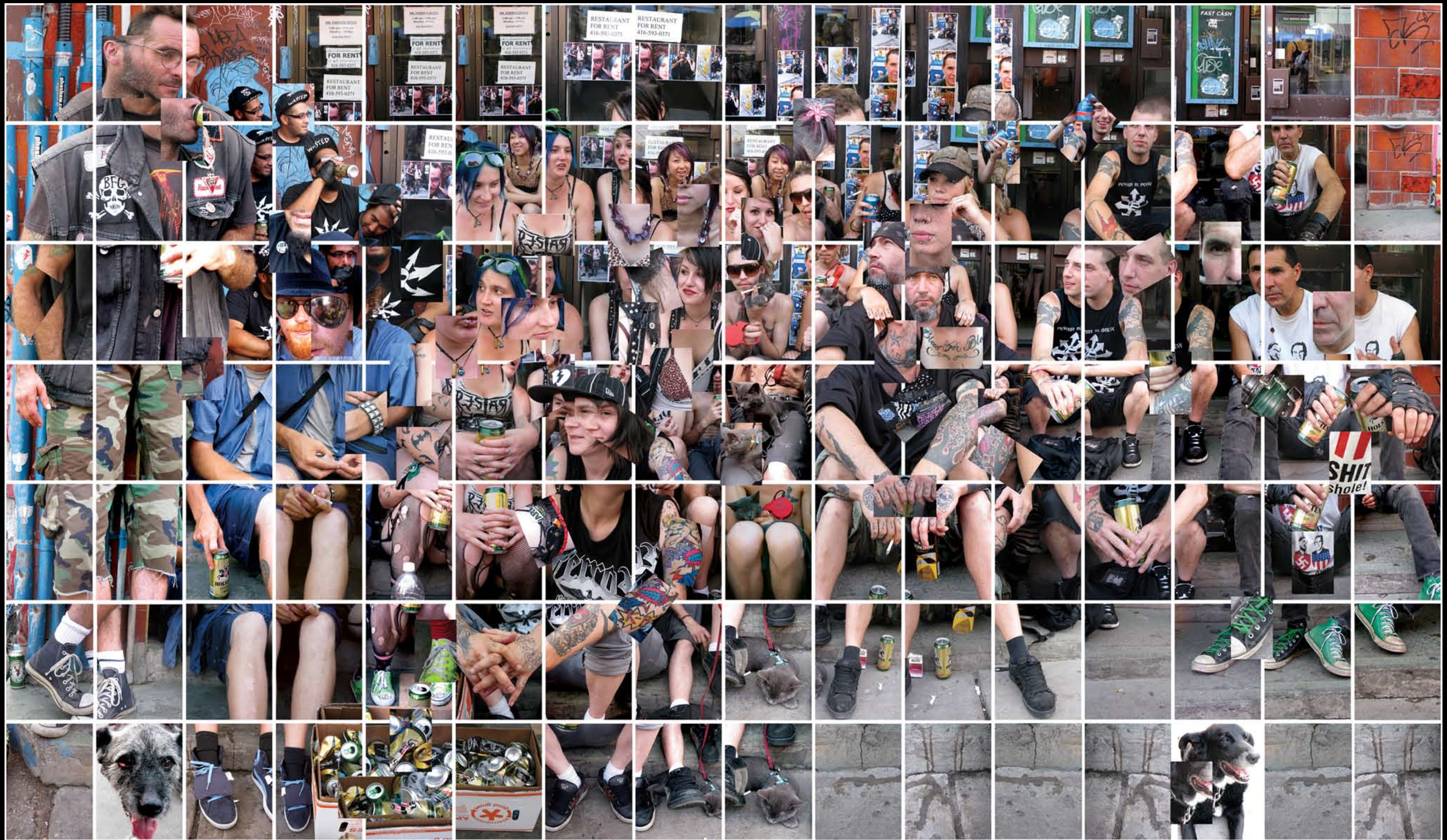


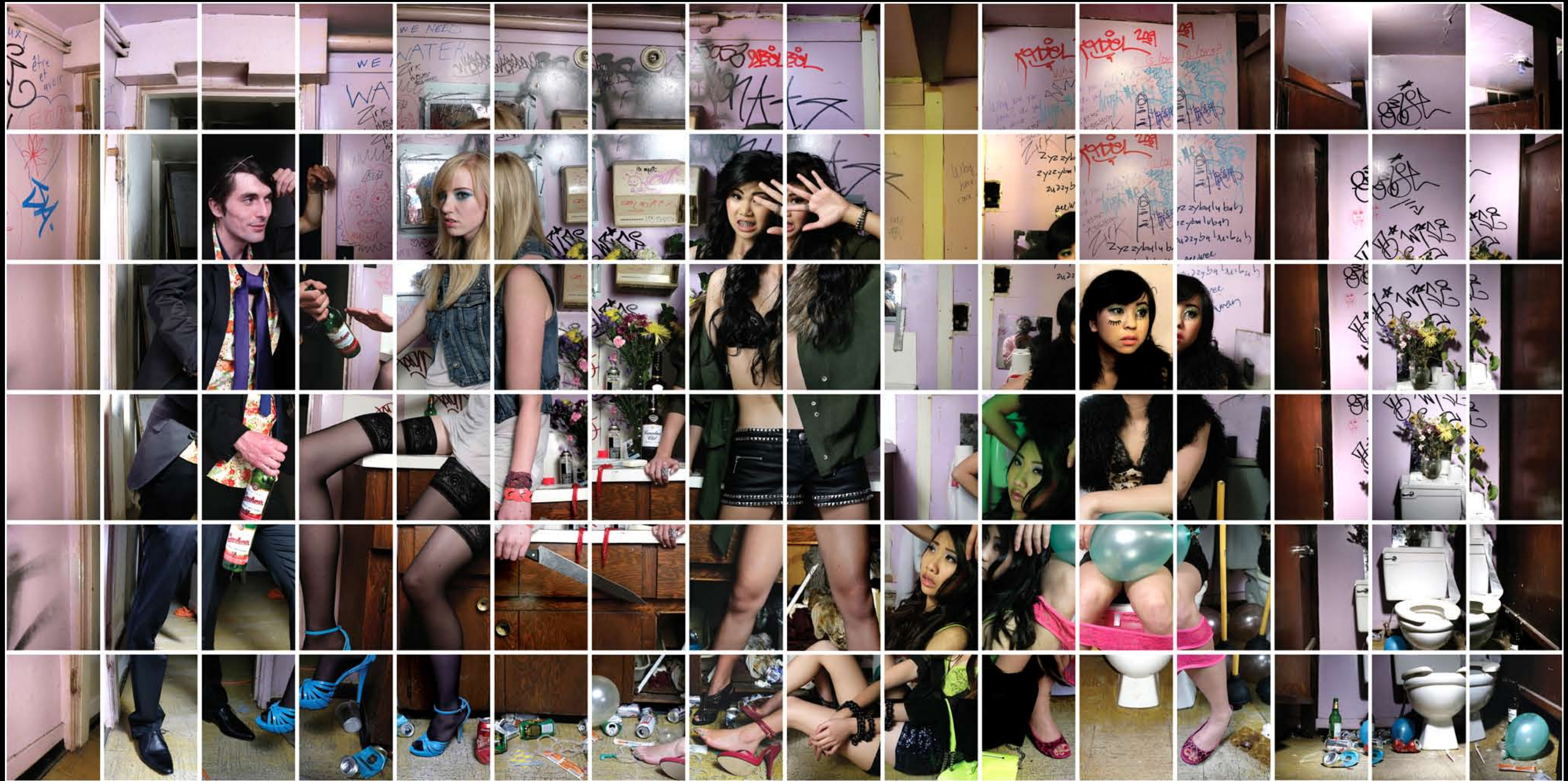
Photo-cubic Stoop Punks: Portrait Tableau

2009 - 2010 Toronto - Vancouver, Canada

Individual images: 22 x 28 cm / 8.3 x 11 in --- Overall installation: 2.06 x 3.66 m / 81 x 144 in. / 6.75 x 12 ft.

Multiple format photographic prints, glass/wood frames

[\[More Images\]](#)



Don't Ask, Don't Tell [On Unimagined Fragments that Arise When World's Collide from the Instantaneous Transition from Innocence to Debauchery] (with Jennifer Osborne)

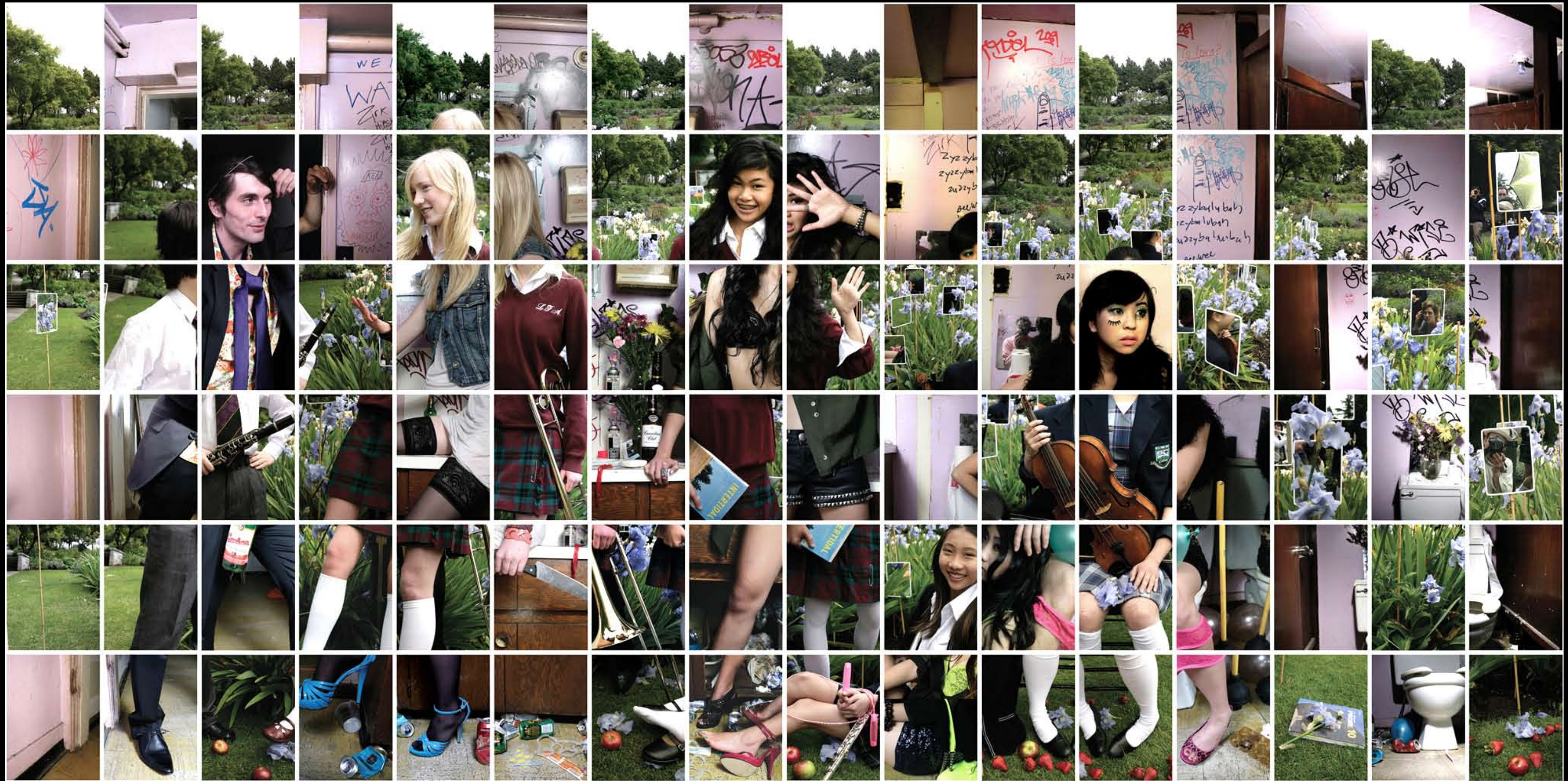
Interior Scene, first layer - DRAFT WORK IN PROGRESS

2010

Vancouver, Canada

Individual images: 28 x 36 cm / 11 x 14 in --- Interior scene: 2.30 x 4.88 m / 90 x 192 in / 7.5 x 16 ft. --- Overall installation: 2.30 x 14.65 m / 90 x 576 in / 7.5 x 48 ft Multiple format photographic prints, glass/steel frames

[\[More Images\]](#)



Don't Ask, Don't Tell [On Unimagined Fragments that Arise When World's Collide from the Instantaneous Transition from Innocence to Debauchery] (with Jennifer Osborne)

Mixed Scene, first layer DRAFT WORK IN PROGRESS

2010

Vancouver, Canada

Individual images: 28 x 36 cm / 11 x 14 in --- Mixed scene: 2.30 x 4.88 m / 90 x 192 in / 7.5 x 16 ft --- Overall installation: 2.30 x 14.65 m / 90 x 576 in / 7.5 x 48 ft Multiple format photographic prints, glass/steel frames

[\[More Images\]](#)



Don't Ask, Don't Tell [On Unimagined Fragments that Arise When World's Collide from the Instantaneous Transition from Innocence to Debauchery] (with Jennifer Osborne)

Exterior Scene, first layer DRAFT WORK IN PROGRESS

2010

Vancouver, Canada

Individual images: 28 x 36 cm / 11 x 14 in --- Exterior scene: 2.30 x 4.88 m / 90 x 192 in / 7.5 x 16 ft --- Overall installation: 2.30 x 14.65 m / 90 x 576 in / 7.5 x 48 ft Multiple format photographic prints, glass/steel frames

[\[More Images\]](#)

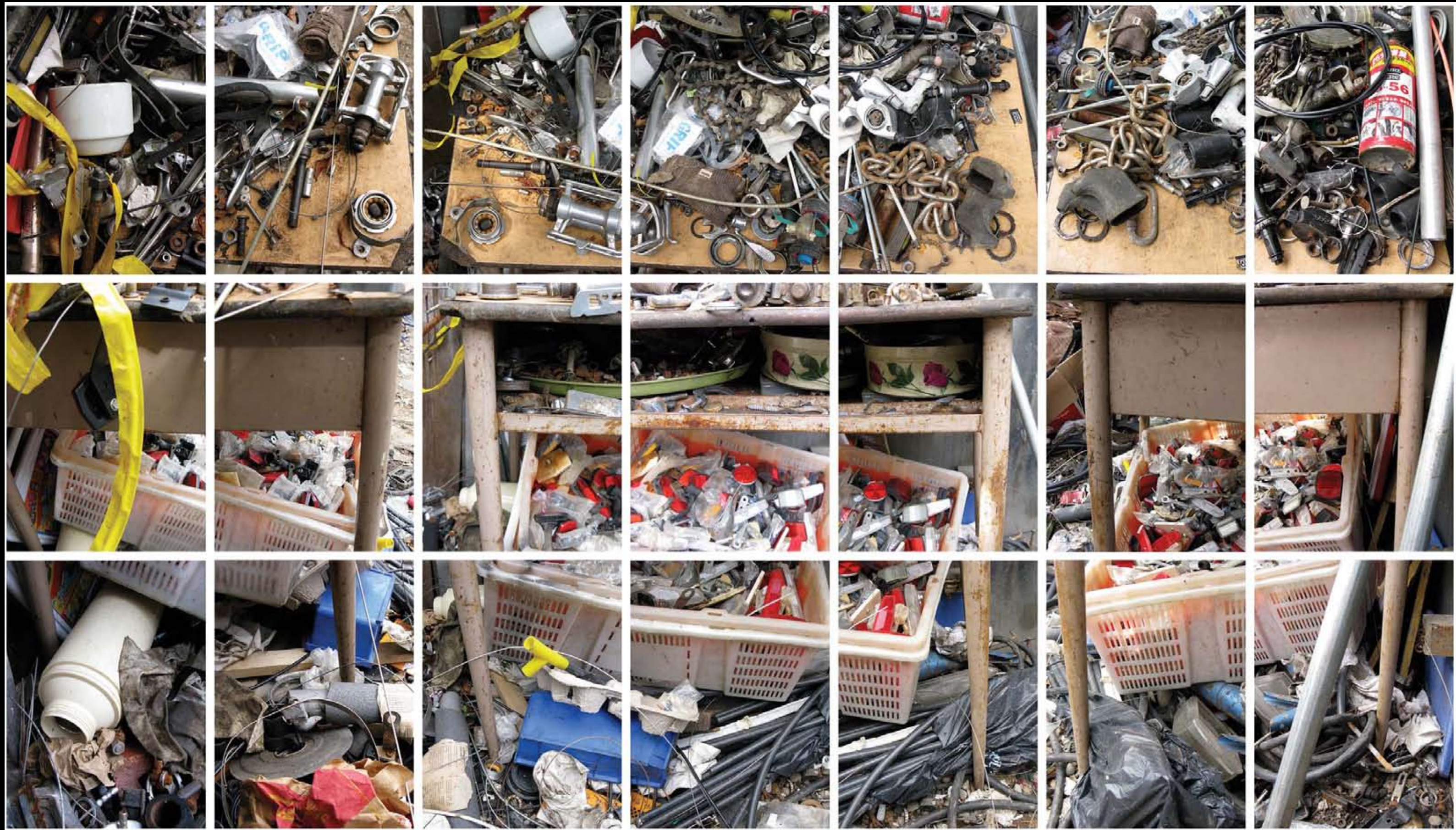


Photo-cubic Parts Unknown School Desk [Three-quarter wraparound: left side, front, and right side views]

2009 Toronto, Canada Overall installation: .84 x 1.51 m / 33 x 59.5 in Multiple format photographic prints, glass/steel frames

[\[More Images\]](#)



Photo-cubic Carpenters [On the Fractured Authenticity of Here and Now as Compared to Seamless Artistic Fiction in the Guise of Historical Representation]

2009 - 2010 Vancouver, Canada

Overall installation: 1.40 x 1.95 m / 55 x 76.5 in / 4.6 x 6.4 ft.

Multiple format photographic prints on panel

[\[More Images\]](#)



Public Private Cubic Couple: [On the Actuality of Being Two Places at Once While Simultaneously Revealing Both Public and Private Persona]

2008 - 2009 Stanley Park + Vancouver Art Gallery, Vancouver, Canada

Overall installation: 1.68 x 2.16 m / 66 x 85 in / 5.5 x 7 ft

Multiple format photographic prints on panel

[\[More Images\]](#)

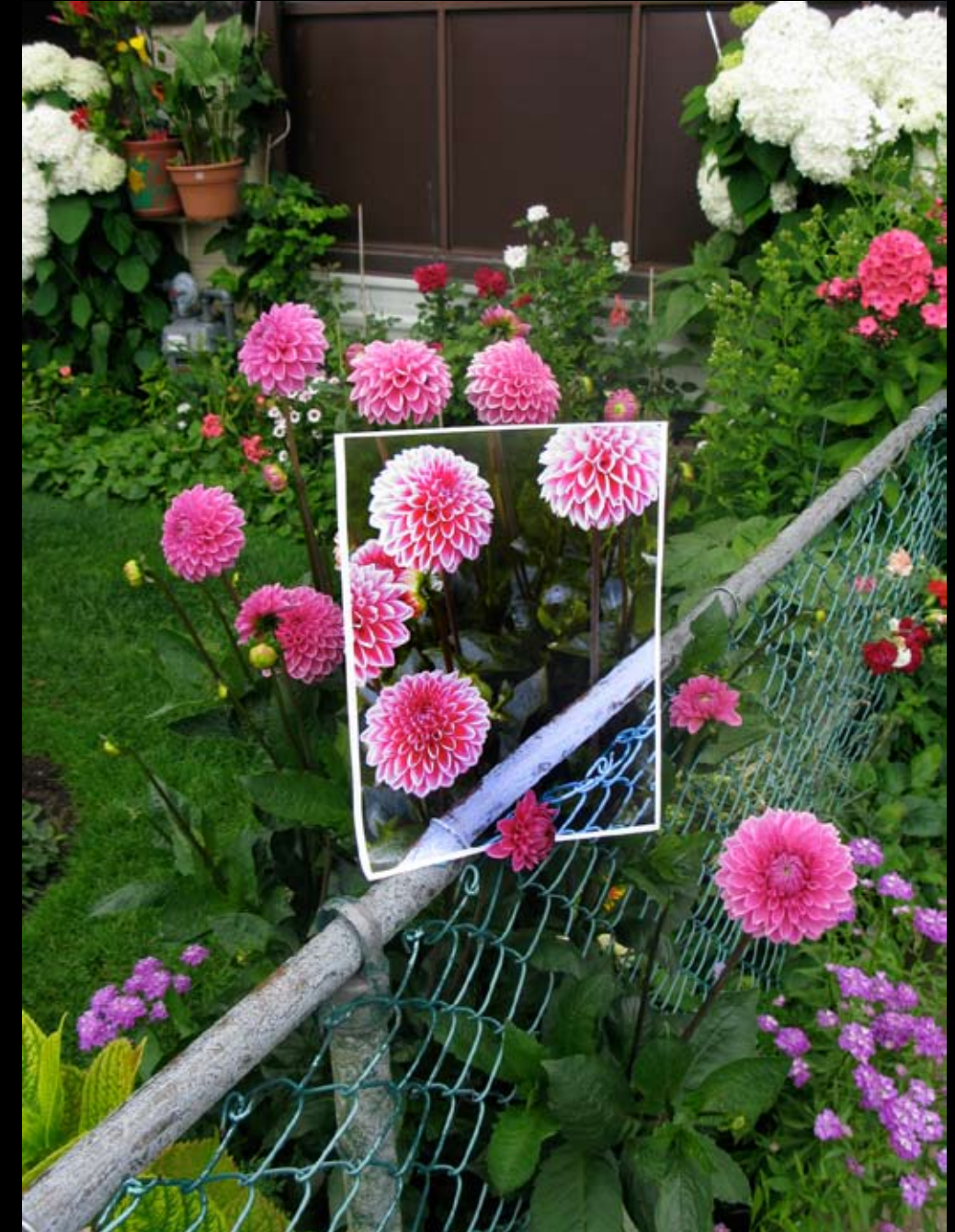


Andrew01 vs Cameraman - Throwup Throwdown [Photo-based Competitive Challenge] (with Byron Dauncey)

2007 Vancouver, Canada Central figures detail: 2.44 x 2.44 m / 96 x 96 in / 8 x 8 ft --- Overall installation: 2.44 x 7.23 m / 96 x 288 in / 8 x 24 ft

Multiple format photographic prints, mixed media on panel

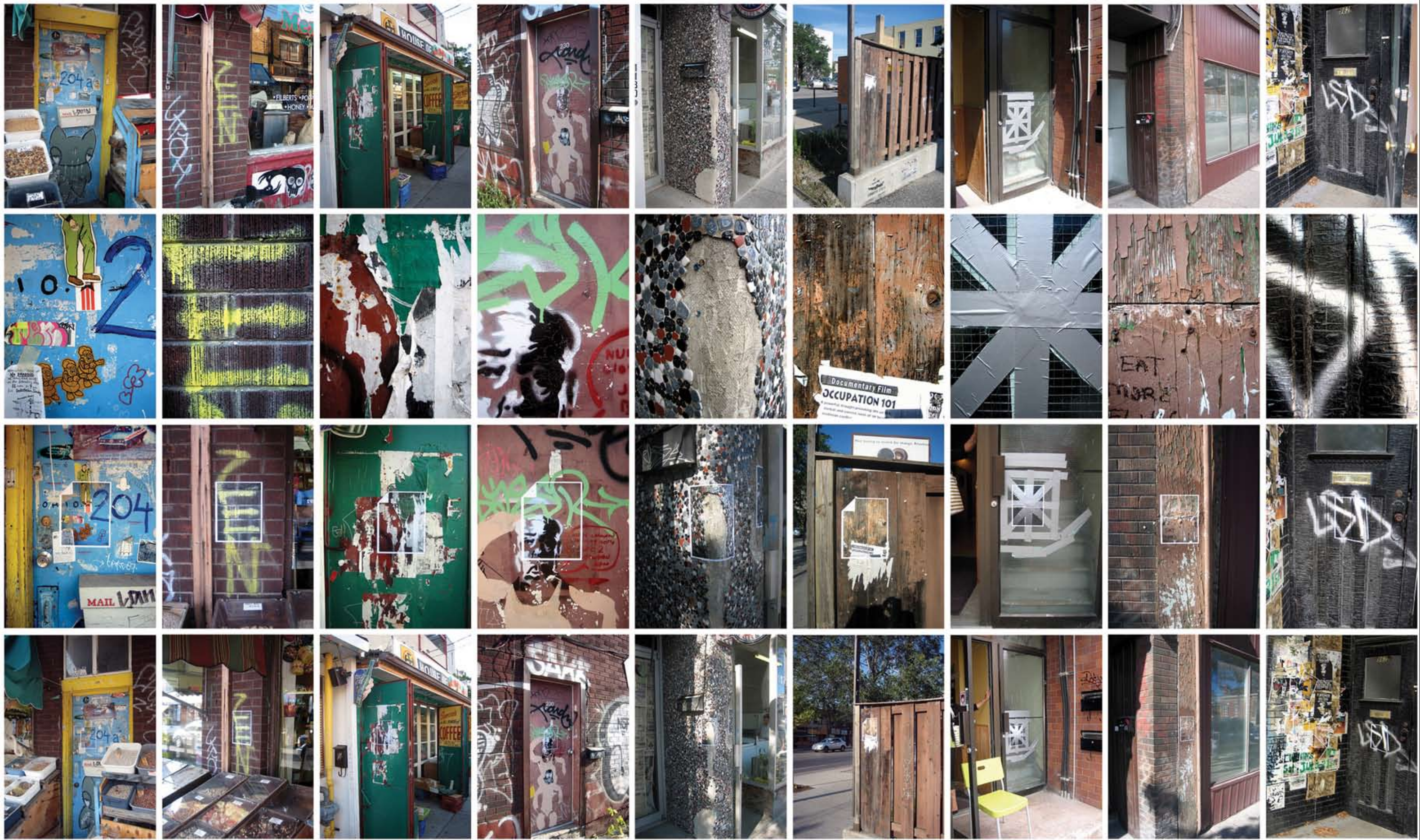
[\[More Images\]](#)



Re-photo-cubic Surfaces/People/Flowers [On the Possibility of Creating a Map of the Empire at a Scale of One-to-One While Foregrounding the Limitations of Representation Surfaces, Fauna, Flora]

2009 Toronto, Canada Details: Taped Door; Stone Masons; Dahlia Flowers

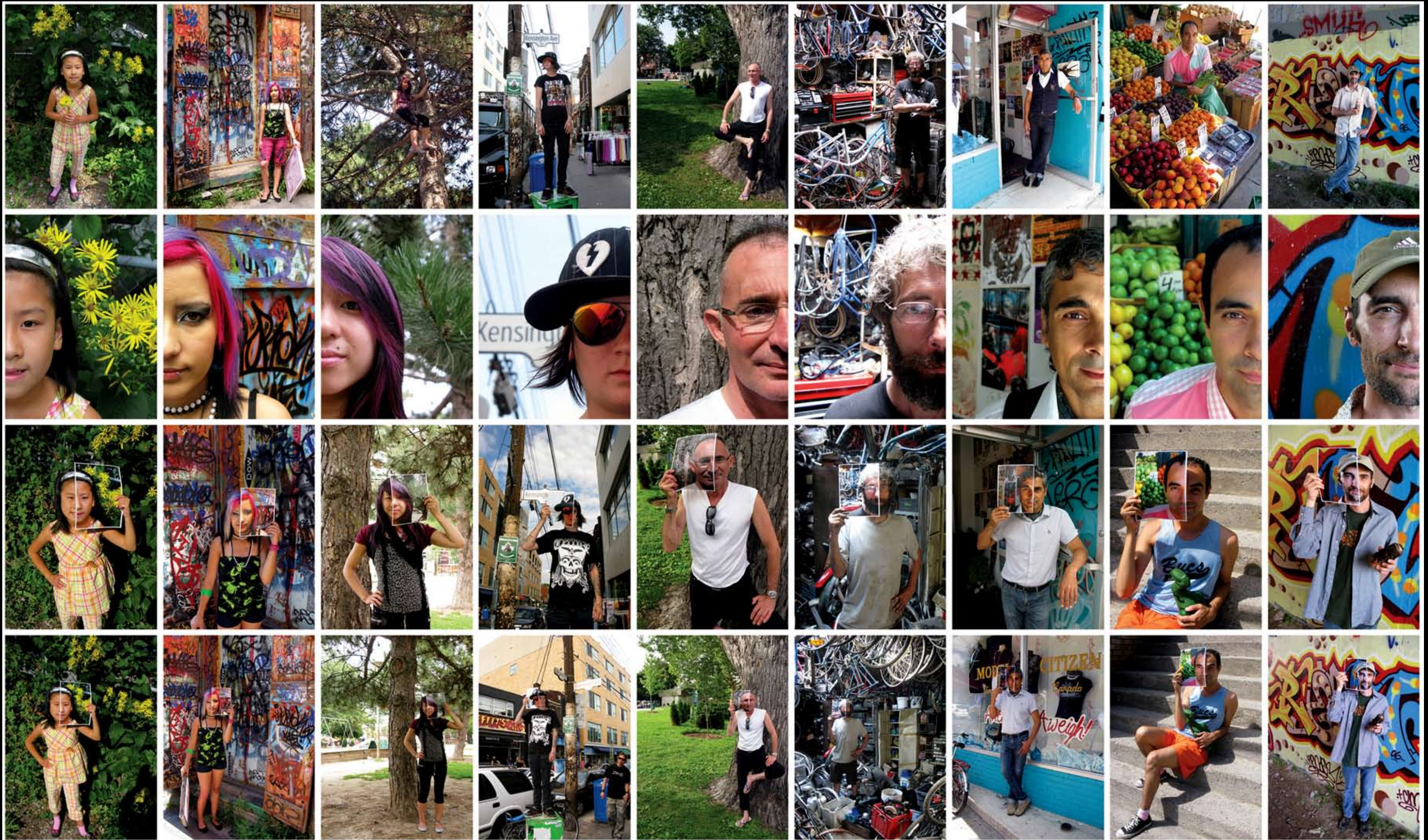
[\[More Images\]](#)



Re-photo-cubic Surfaces - Toronto [On the Possibility of Creating a Map of the Empire at a Scale of One-to-One While Foregrounding the Limitations of Representation: Surfaces] (10% detail)

2007 Toronto, Canada Central section (above): 1.12 x 2.16 m / 44 x 85 in / 3.6 x 7 ft --- Overall installation: 1.12 x 21.60 m / 44 x 850 in / 3.6 x 70 ft

[\[More Images\]](#)



Re-photo-cubic People: Solos - Toronto [On the Possibility of Creating a Map of the Empire at a Scale of One-to-One While Foregrounding the Limitations of Representation: Fauna]

(50% detail)

2009

Toronto, Canada

Central section (above): 1.12 x 2.16 m / 44 x 85 in / 3.6 x 7 ft --- Overall installation: 1.12 x 4.32 m / 44 x 170 in / 3.6 x 14 ft

[\[More Images\]](#)



Re-photo-cubic Flowers - Toronto [On the Possibility of Creating a Map of the Empire at a Scale of One-to-One While Foregrounding the Limitations of Representation: Flora] (50% detail)

2009 Toronto, Canada Central section (above): 1.12 x 2.16 m / 44 x 85 in / 3.6 x 7 ft --- Overall installation: 1.12 x 4.32 m / 44 x 170 in / 3.6 x 14 ft

[\[More Images\]](#)



Re-photo-cubic Cityfood (with Byron Dauncey)

2008 Vancouver, Canada variable dimensions

[\[More Images\]](#)

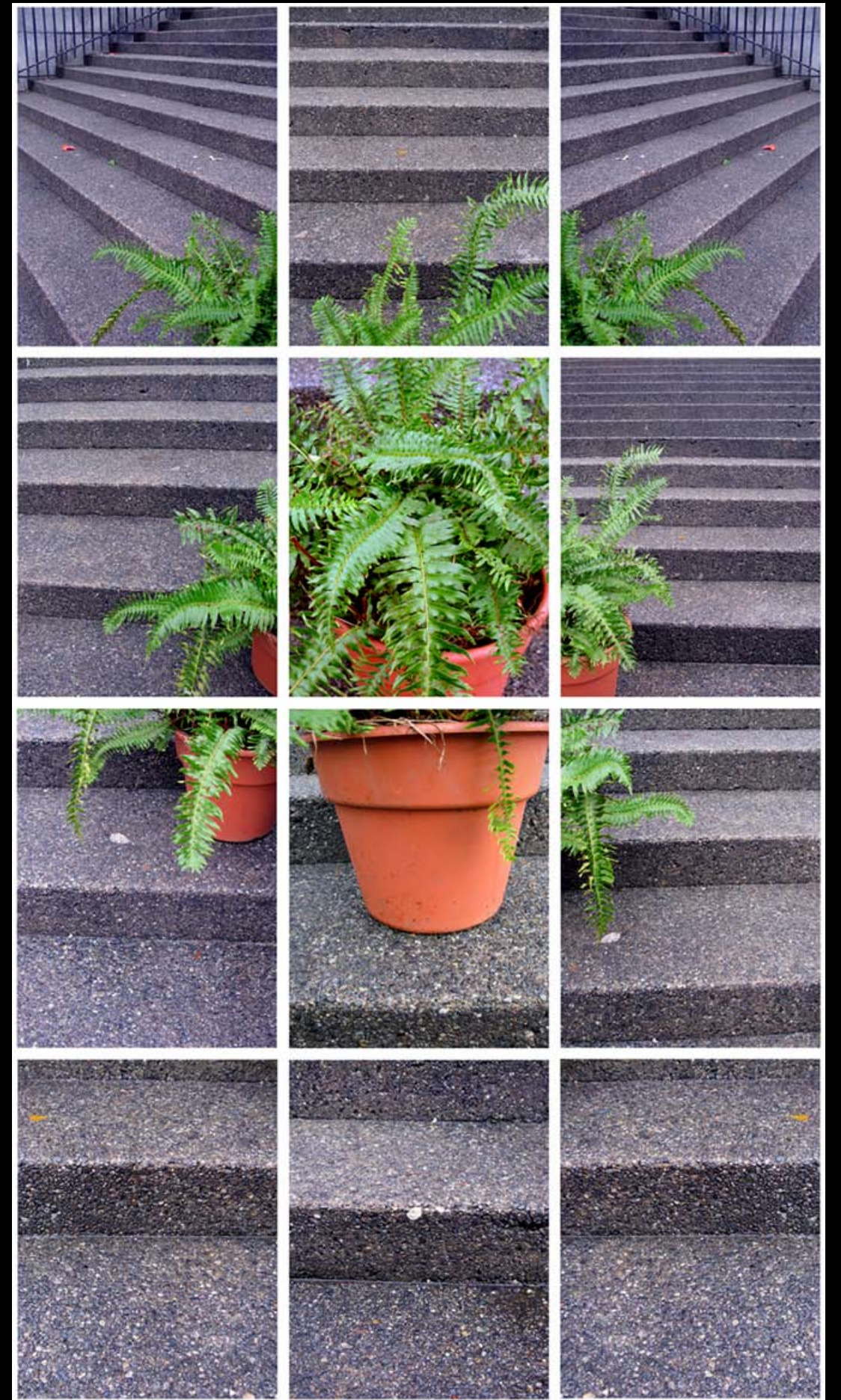


Photo-cubic Ferns

2007 Vancouver, Canada 65 x 108 cm / 25.5 x 44 in

[\[More Images\]](#)

A01

**Andrew Owen A01
Creative Produce**

**Photo-based
Artworks**

Turning photography back on itself by deploying an arsenal of meta-photographic strategies including: Re-photographing photographs of actions; Filmic sequential series; Repurposing found cameras; Subject-object confusion; Collapse of content and context; and Recontextualizing discarded identity images, to critique the implied technical objectivity of photography, and expose the socioeconomic, political and ethical problems resulting from hack ethnography, and the dangerously distorting limitations of the traditional photographic gaze.

Copyright©AndrewOwen2011
[www.A01creative.com]



Alien Registration II

2004 - 2006 Taipei, Taiwan + Vancouver, Canada 40 x 51 cm / 16x 20 in Found radically cropped passport photographs

[More Images]



Alien Registration II - detail; Alien Registration I [On the Radical Excision and Abandonment of One's Original Identity to Adapt to the Inexorable Forces of Globalization]

2002 - 2006 Taipei, Taiwan + Vancouver, Canada Found radically cropped passport photographs

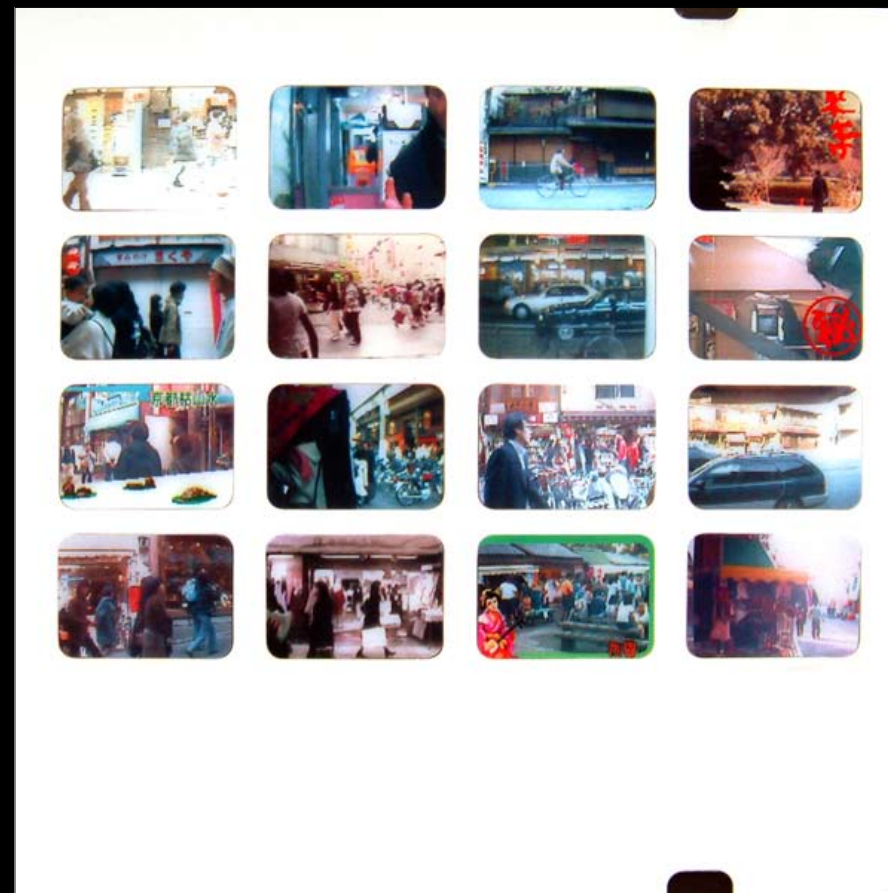
[\[More Images\]](#)



Globanality (Re-presented Wonders): [On the Relentless Production of Cultural Simulacra Threatening to Obliterate the Sites of Desire]

1996 - 2009 Word-wide Souvenir objects and photographs mounted on panels Each panel: 30 x 38 cm / 12 x 15 in --- Overall installation x 50 panels: ~ 3.00 x 5.00 m / 118 x 197 in / ~10 x 16 ft

[\[More Images\]](#)



Automatic Landscapes: [Collapsing the Chasm Between Subject and Viewer; Allowing Content and Context to Become One] +detail

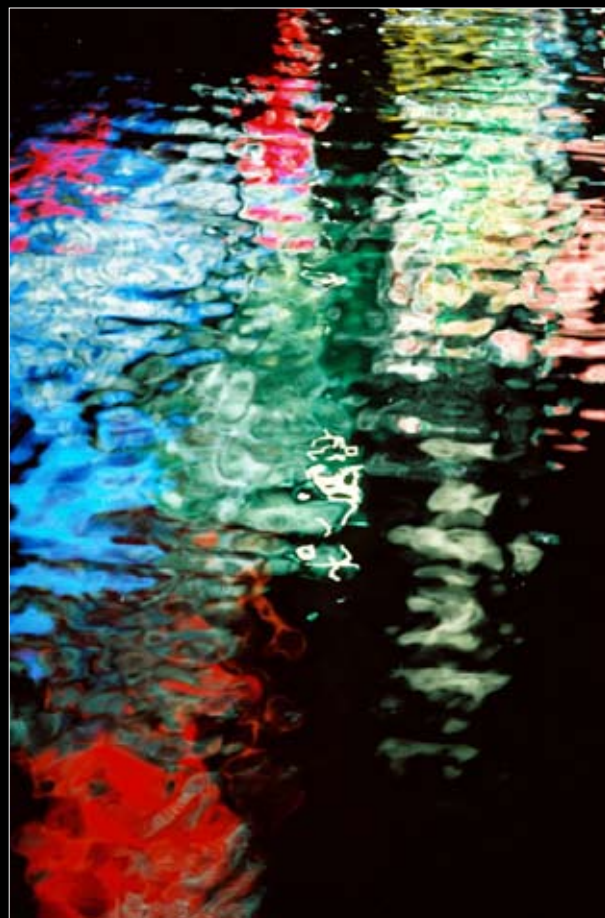
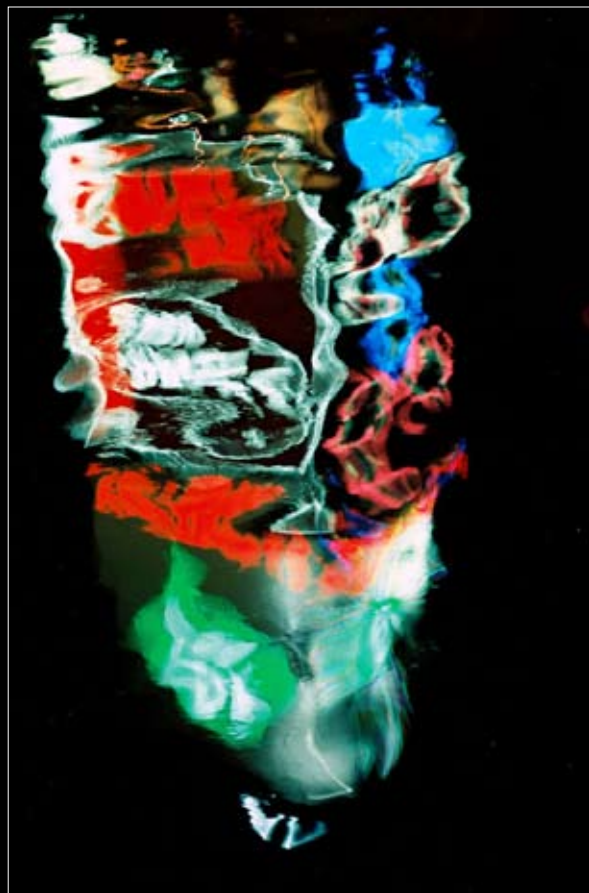
1997 - 2001 Korea + Japan

Repurposed digital photo-stickers

8 works total x 16, 1.5 x 2 cm images ea.

Each work: 11 x 11 cm / 4.33 x 4.33 in + 10X ink jet on laminated film enlargements: 1.10 x 1.10 m / 4

[\[More Images\]](#)



Water & Electricity Do Mix

1998 - 99

Osaka, Japan

Photographic prints suspended from horizontal cables Dimensions variable

[\[More Images\]](#)



Glow in the Dark [Beetlenut Beauties of Roadside Taiwan]

2003 Taipei, Taiwan Photographic prints Dimensions variable

[\[More Images\]](#)



EnvironMental Re-photographic Polaroid Painting (with Jamie Osborne)

1989 Toronto, Canada

Sequence of 10 painted and rephotographed Polaroid photographs, staples, white latex, orange spray enamel

[\[More Images\]](#)

A01

**Andrew Owen A01
Creative Produce**

Excavations [Vancouver]

Cutting, peeling, striping and excavating into the multiple layers of paper poster hoardings harvested from the urban surface of Vancouver's Downtown Eastside and Chinatown.

Systematically probing and revealing the various underlying strata of ephemeral images and information in a meticulous and time-consuming process akin to archeological excavation: revealing the passage of time, exposing the layering of past activities and events, and discovering forgotten treasures within.

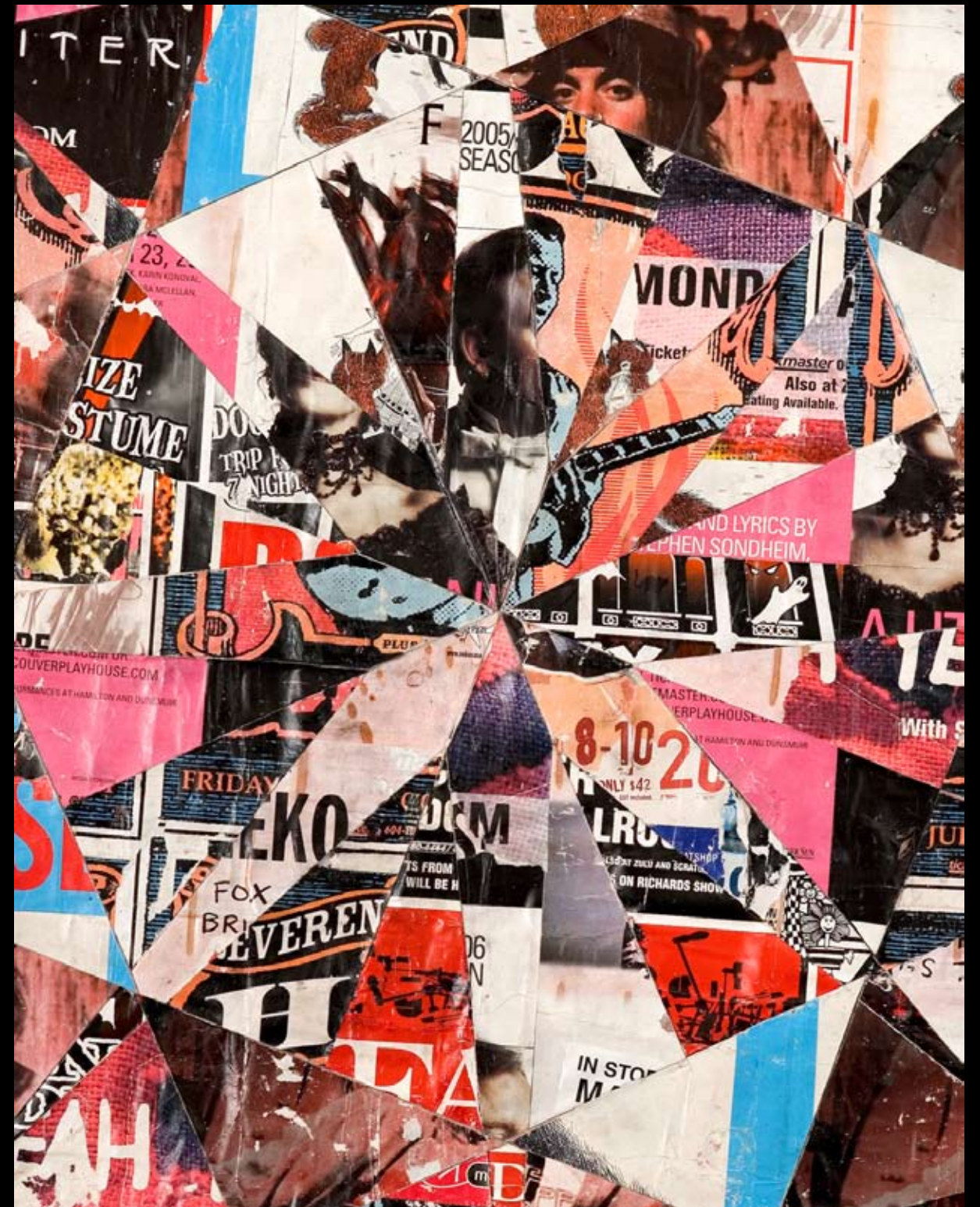
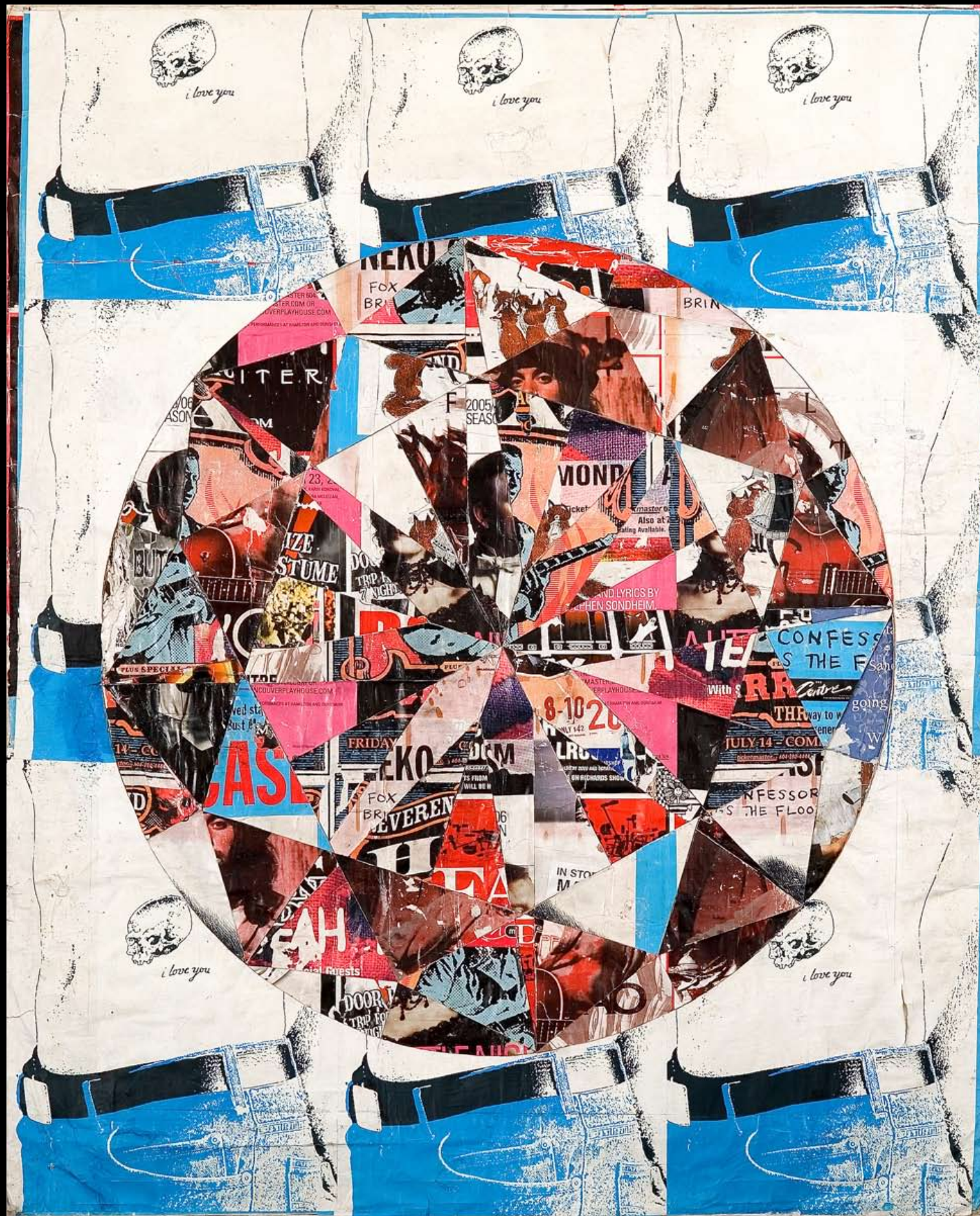
Creation by a subtractive process: nothing is added, only subtracted. Creating artifacts of beauty, historical curiosity and artistic value by carefully removing layers of abandoned ephemera.

**Copyright©AndrewOwen2011
[www.A01creative.com]**



Autumn to Winter [Maple Leaf & Bamboo, Canada & China, Westside & Eastside, Sheila & I]
2007 Vancouver Canada .71 x 1.12 m / 28 x 44 in Excavated paper poster hoarding

[\[More Images\]](#)



Brilliant Cut [Diamond]

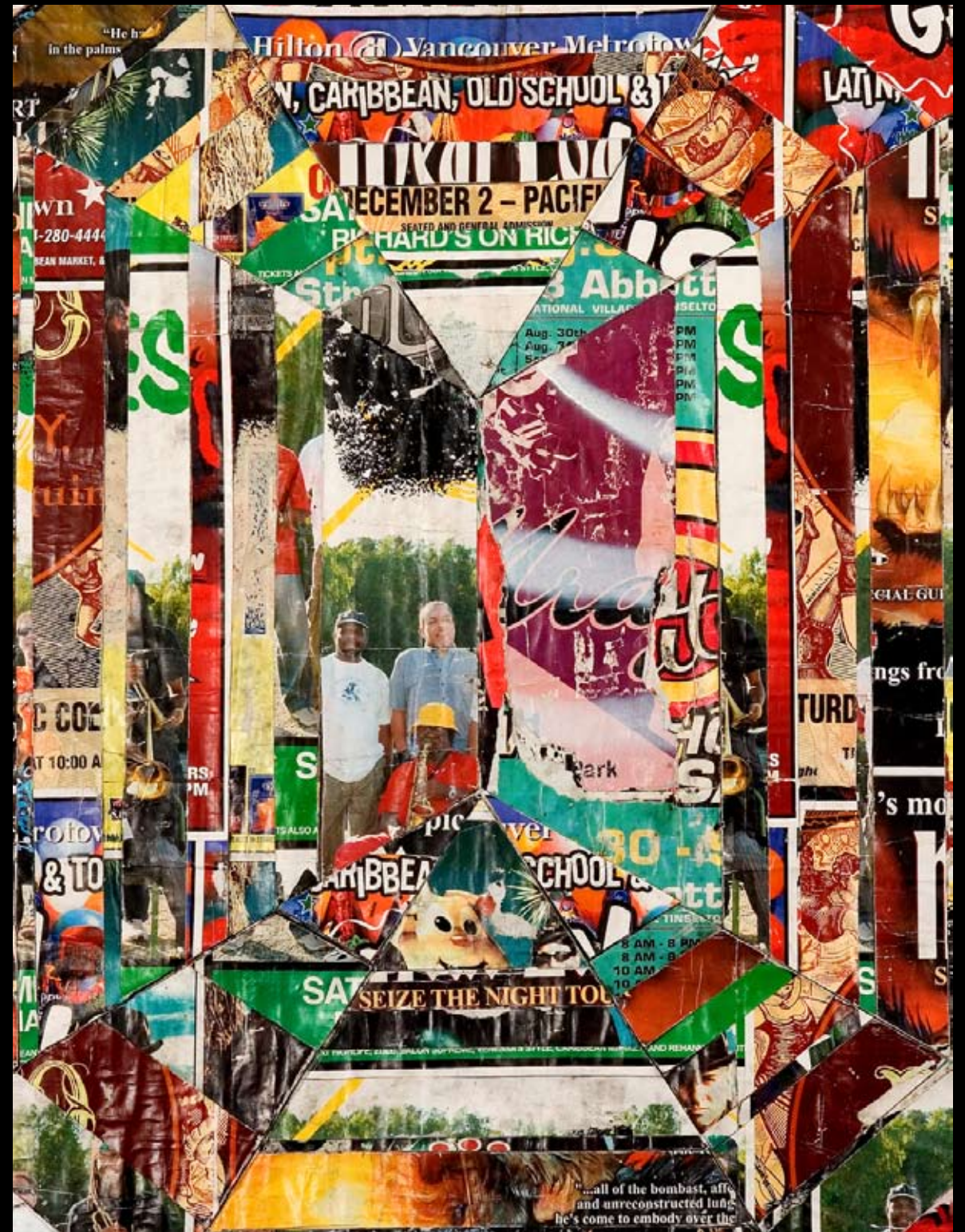
+detail

2008 Vancouver Canada

1.32 x 1.42 m / 52 x 56 in

Excavated paper poster hoarding

[\[More Images\]](#)



Emerald Cut [Emerald]

+detail

2008 Vancouver Canada

1.32 x 1.42 m / 52 x 56 in

Excavated paper poster hoarding

[\[More Images\]](#)



Brilliant Cut Dyrhoef 06.2007

Brilliant Cut Maquette

2007 Vancouver Canada 40 x 40 cm / 16 x 16 in

Excavated paper poster hoarding

[\[More Images\]](#)



Emerald Cut

Dyrhoef 10.2007

Emerald Cut Maquette

2007 Vancouver Canada 40 x 40 cm / 16 x 16 in

Excavated paper poster hoarding

[\[More Images\]](#)



Lilies Excavation II

2006 Vancouver Canada

30 x 40 cm / 12 x 16 in

Excavated paper poster hoarding

[\[More Images\]](#)



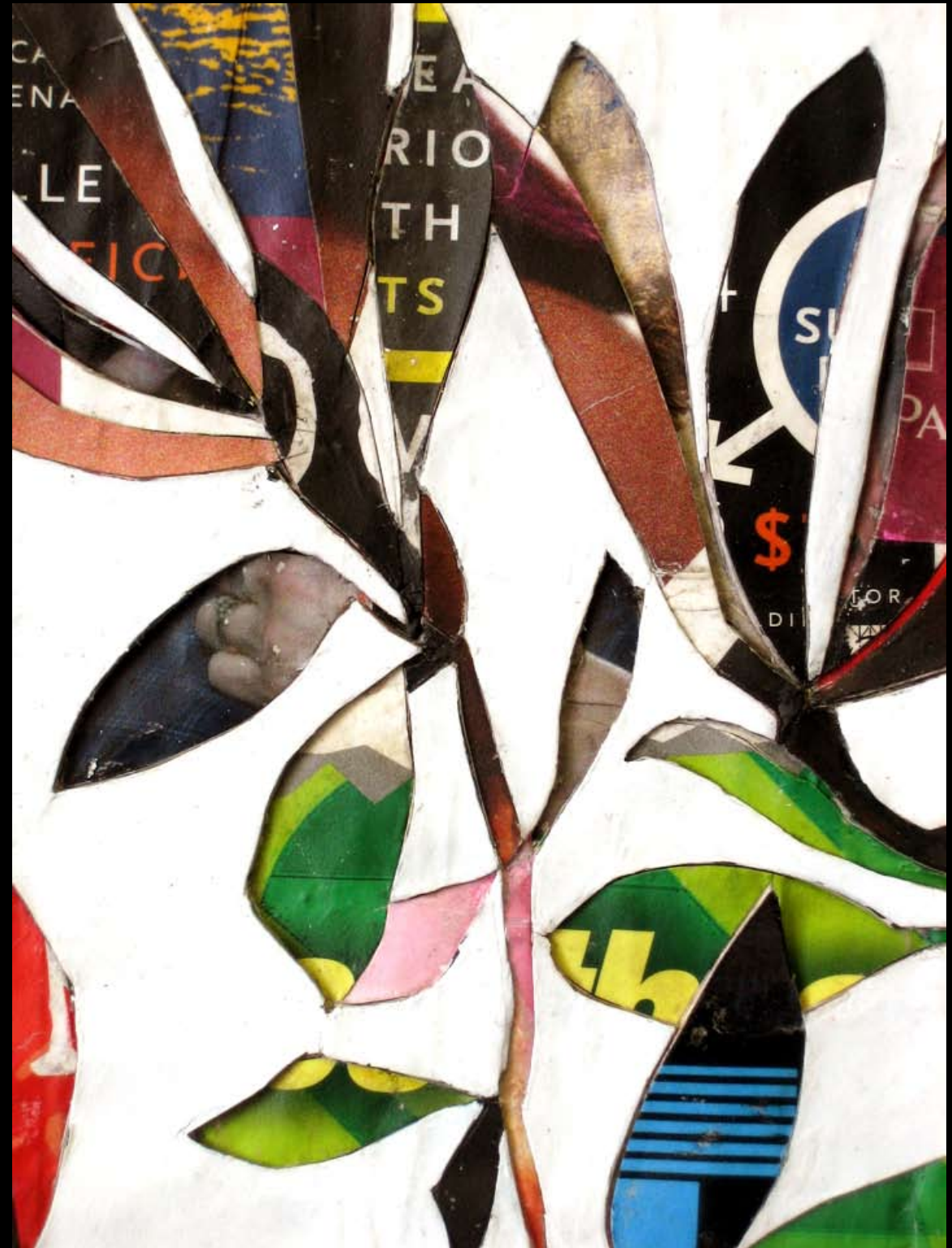
Bamboo Excavation II

2007 Vancouver, Canada

30 x 40 cm / 12 x 16 in

Excavated paper poster hoarding

[\[More Images\]](#)



Magnolia II +detail

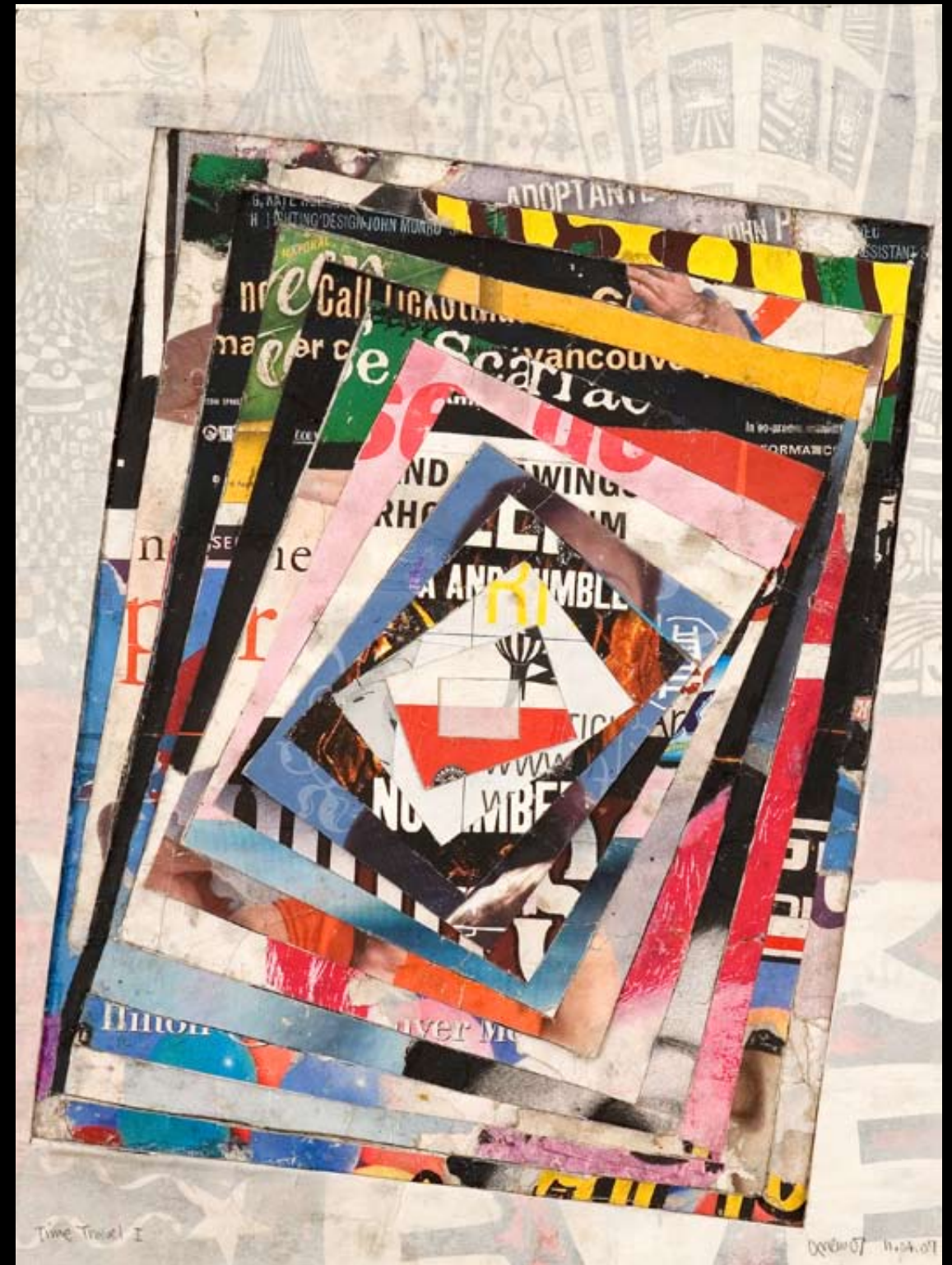
2007 Vancouver Canada 30 x 45 cm / 12 x 18 in

Excavated paper poster hoarding

[\[More Images\]](#)



Time Travel I
2006 Vancouver, Canada 31 x 40 cm / 12 x 16 in Excavated paper poster hoarding
[\[More Images\]](#)



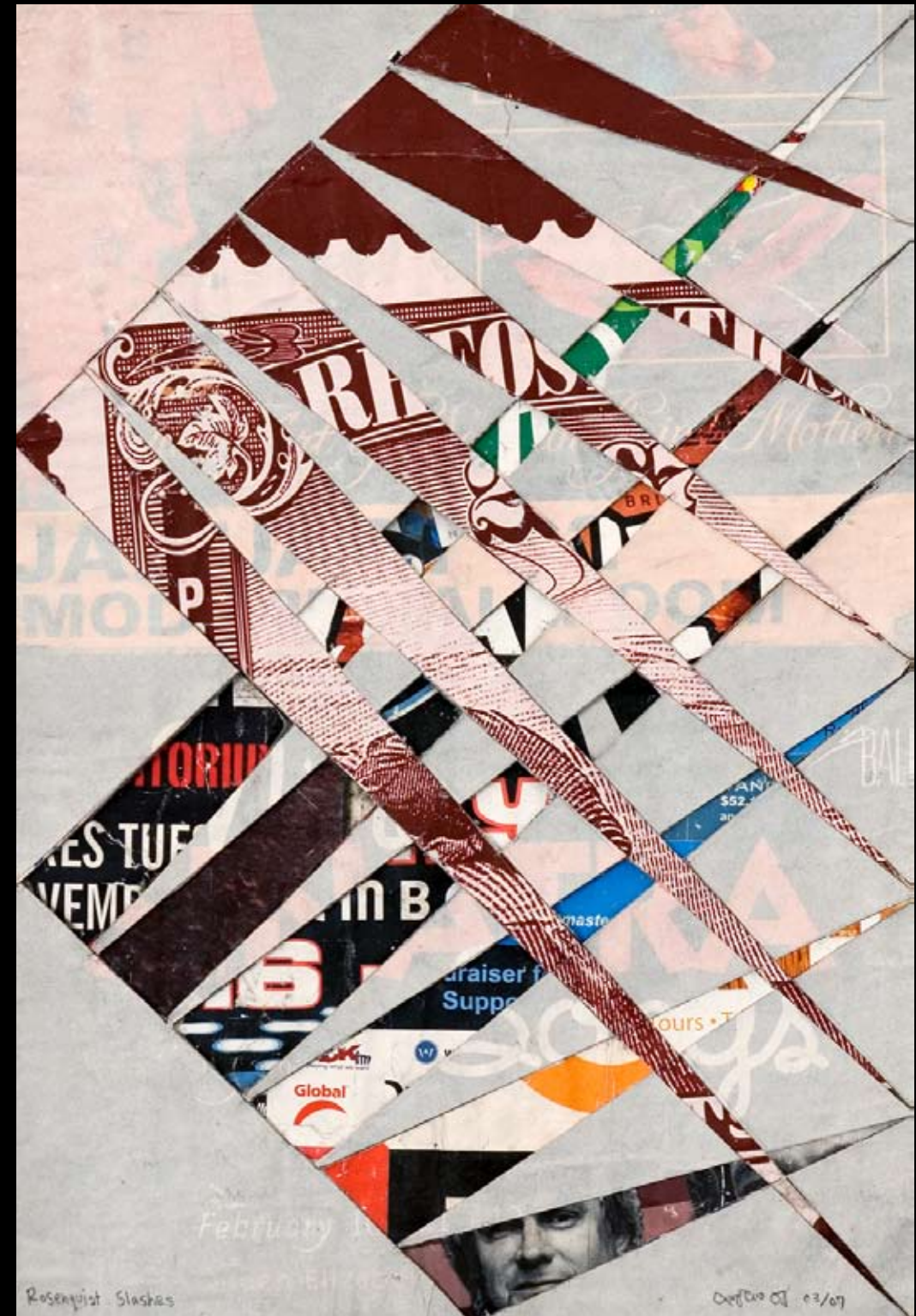
Time Travel II
2006 Vancouver Canada 31 x 40 cm / 12 x 16 in Excavated paper poster hoarding
[\[More Images\]](#)



Maximum Disruption

2007 - 2010 Vancouver, Canada .93 x 1.40 m / 36.5 x 55 in Excavated paper poster hoarding

[\[More Images\]](#)



Maximum Disruption Maquette [Rosenquist Slashes]

2007 Vancouver, Canada 31 x 45 cm / 12 x 17.5 in Excavated paper poster hoarding

[\[More Images\]](#)

A01

**Andrew Owen A01
Creative Produce**

**Impressions
[C a n a d a]**

Floral paintings created with an original experimental technique employing natural plants and flowers in a painting process that captures very detailed and life-like impressions of the flowers at true life-size, one-to-one scale.

The program was initiated at a small-scale on paper in Korea, Japan and Taiwan China, before further evolving in scope and scale on canvas in Canada.

Created in the field amongst the flowers, each in one all-day sitting, only some works "succeed." The floral paintings result from an intersection between determined skill and accidental chance.

Informed by deep study of Chinese ink painting, yet employing a Western materiality and process; incorporating Chinese painting principals such as *liu bai* (leave white), flatness, subtle tones and minimization of artistic hand, the florals transcend false dichotomies between East and West, traditional and contemporary, real and representational.

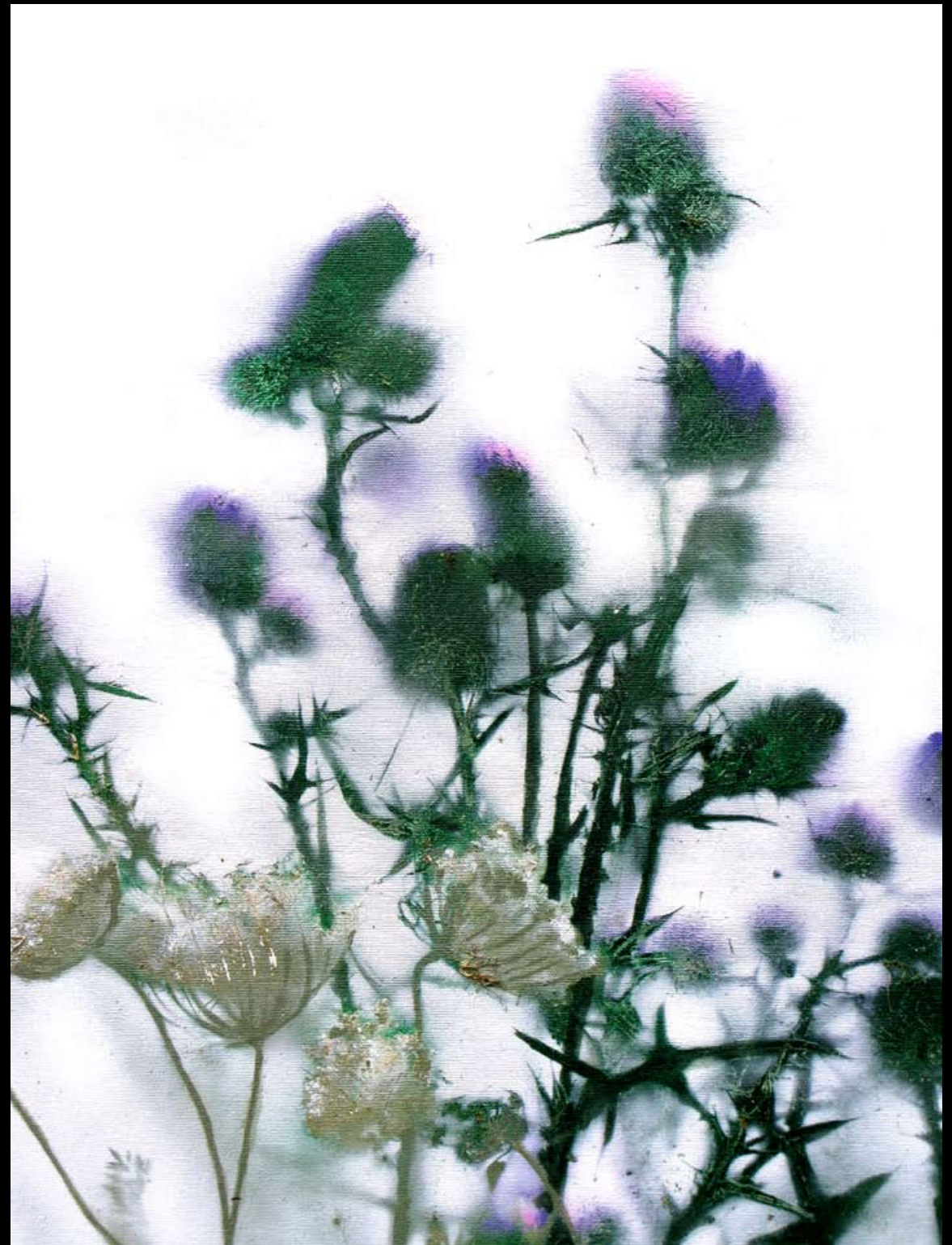
Copyright©AndrewOwen2010
[www.A01creative.com]



Fireweeds

2008 Vancouver, Canada 1.04 x 1.50 m / 41 x 59 in / ~3.5 x 6 ft Spray enamel and flowers on canvas

[\[More Images\]](#)



Ontario Weeds II +detail

2009 Toronto, Canada

1.52 x 2.13 m / 60 x 84 in / 5 x 7 ft

Spray enamel and flowers on canvas

[\[More Images\]](#)



Pink Popcorn Plum Blossoms on Black +detail
2010 Vancouver, Canada 1.01 x 1.52 m / 40 x 60 in / 3.4 x 5 ft Spray enamel, acrylic and flowers on canvas
[\[More Images\]](#)



Three Friends of Winter

2008 Vancouver, Canada .79 x 1.07 m / 31 x 42 in

Spray enamel and flowers on canvas

[\[More Images\]](#)



Humber River Wildflowers II +detail

2007 Toronto, Canada

1.22 x 1.73 m / 48 x 68 in / 4 x 5.6 ft

Spray enamel and flowers on canvas

[\[More Images\]](#)



Funny Farm Flowers

2007 Ontario, Canada

.91 x 1.12 m / 36 x 44 in / ~3 x 3.5 ft

Spray enamel and flowers on canvas

[\[More Images\]](#)



Kitsilano Flowers

2008 Vancouver, Canada

.76 x 1.12 m / 30 x 44

Spray enamel and flowers on canvas

[\[More Images\]](#)



Metallic Maple Leaves & Bamboo on Black

2008 Vancouver, Canada .97 x 1.45 m / 38 x 57 in Metallic spray enamel on canvas

[\[More Images\]](#)



Metallic Oak Leaves on Black

2008 Vancouver, Canada .97 x 1.45 m / 38 x 57 in Metallic spray enamel on canvas

[\[More Images\]](#)



Winter to Spring

+detail

2005

Vancouver, Canada

.66 x 1.12 m / 26 x 44 in

Spray enamel and flowers on canvas

[\[More Images\]](#)



A01

**Andrew Owen A01
Creative Produce**

C O N T A C T

ARTIST DIRECT:

Andrew Owen A01

Web www.a01creative.com

Email andrew_a01@yahoo.ca

Toronto 647 770 0885

Vancouver 604 338 3252

VANCOUVER REPRESENTATIVES:

Marion Scott Gallery

Judy Kardosh, Robert Kardosh

Web: www.marionscottgallery.com

Email art@marionscottgallery.com

Vancouver 604 685 1934