

A01

**Andrew Owen A01
Creative Produce**

A01 ART 2010 PDF

This A01 ART 2010 PDF presents a selection of images and information on four series of artworks by Canadian visual artist Andrew Owen A01.

A01 ART 2010 PDF is produced for transmission via standard e-mail, and is also suitable for draft printing at 11 x 17 inch or A3 size.

A01 ART 2010 PDF is best viewed with [Adobe Reader](#) in Full Screen Mode, using the arrow keys to page through the document.

High-resolution images suitable for publication are available upon request. Additional images can be viewed via the blue text hyperlinks embedded in this document.

Other versions of the A01 ART PDF that include different series of artwork (below) are available upon request.

- Excavations [Korea/India 95-00]
- Impressions [Korea/Japan/Taiwan 96-05]
- EnvironMental Produce [Canada 87-92]
- Deconstructions/Excavations [Canada 85-87]

Copyright©AndrewOwen2010
[\[www.A01creative.com\]](http://www.A01creative.com)



Photo-cubic Portrait Tableaux



Photo-based Artworks



Excavations [Vancouver]



Impressions [Canada]

A01

**Andrew Owen A01
Creative Produce**

Photo-cubic Portrait Tableaux

Larger-than-life photographic tableaux assembled from large arrangements of multiple format photographic prints, each shot at life-size 1:1-scale, with a multitude of perspectives, locations and time frames, thereby extruding subjects out to multidimensional hyperspace.

Meta-photography that strategically foregrounds the act of photographic representation, to expose and transcend the implied technical objectivity that obscures the distorting ego-driven subjectivity corrupting conventional singular-view photography.

A program informed by reexamining early Korean multiple-perspective still-life painting, the Cubism of Picasso and Duchamp on the centenary of its fluorescence, and explorations by Gilbert & George, Hockney and Snow at the end of Modernism, towards a new visual vernacular at the dawn of the 3rd Millennium.

Copyright©AndrewOwen2010
[www.A01creative.com]



Photo-cubic Stoop Punks: Portrait Tableau - DETAIL

2009 - 10 Toronto - Vancouver, Canada 206 x 366 cm / 81 x 144 in / 6.75 x 12 ft

Multiple format photographic prints

[\[More Images\]](#)

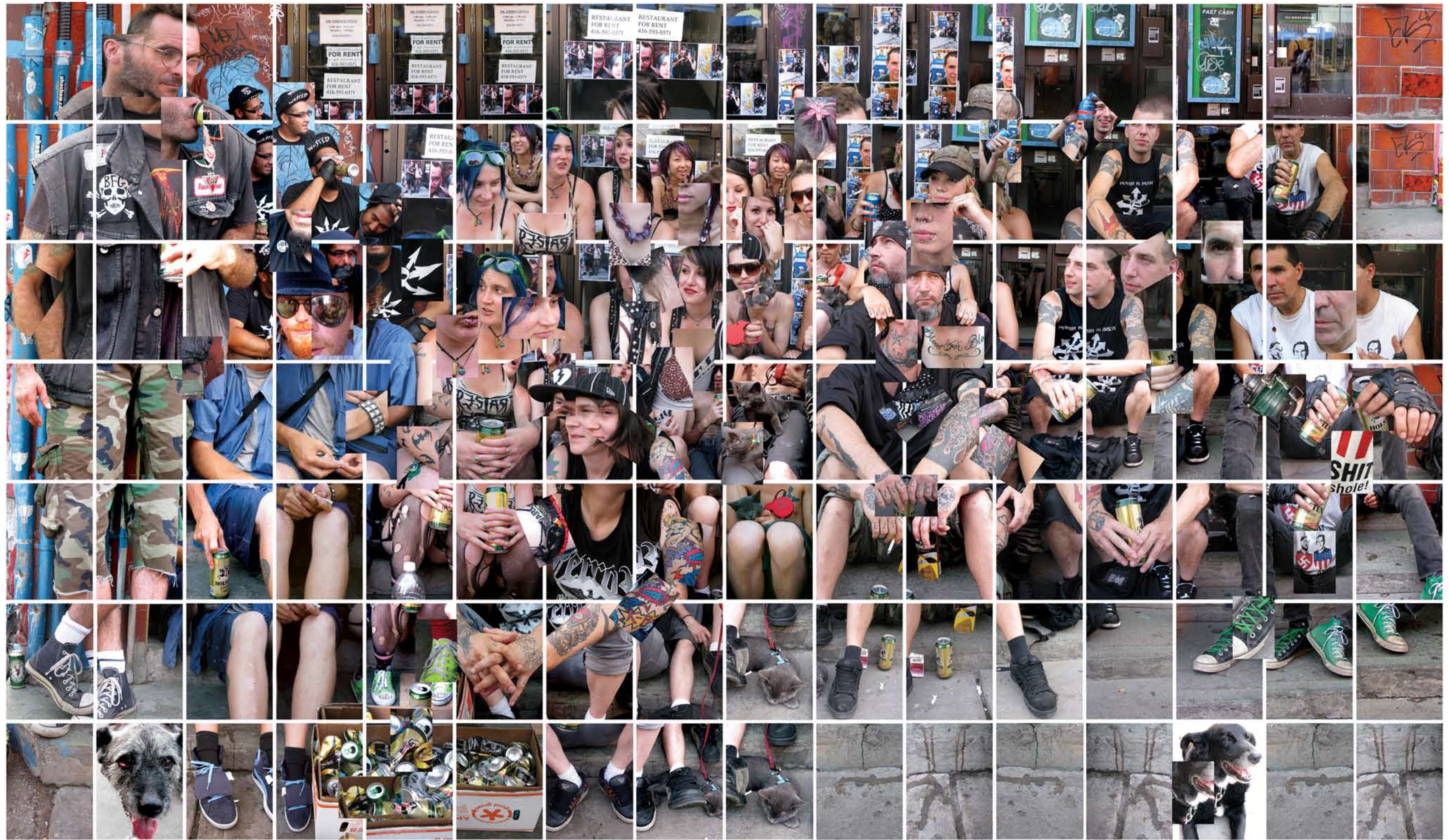


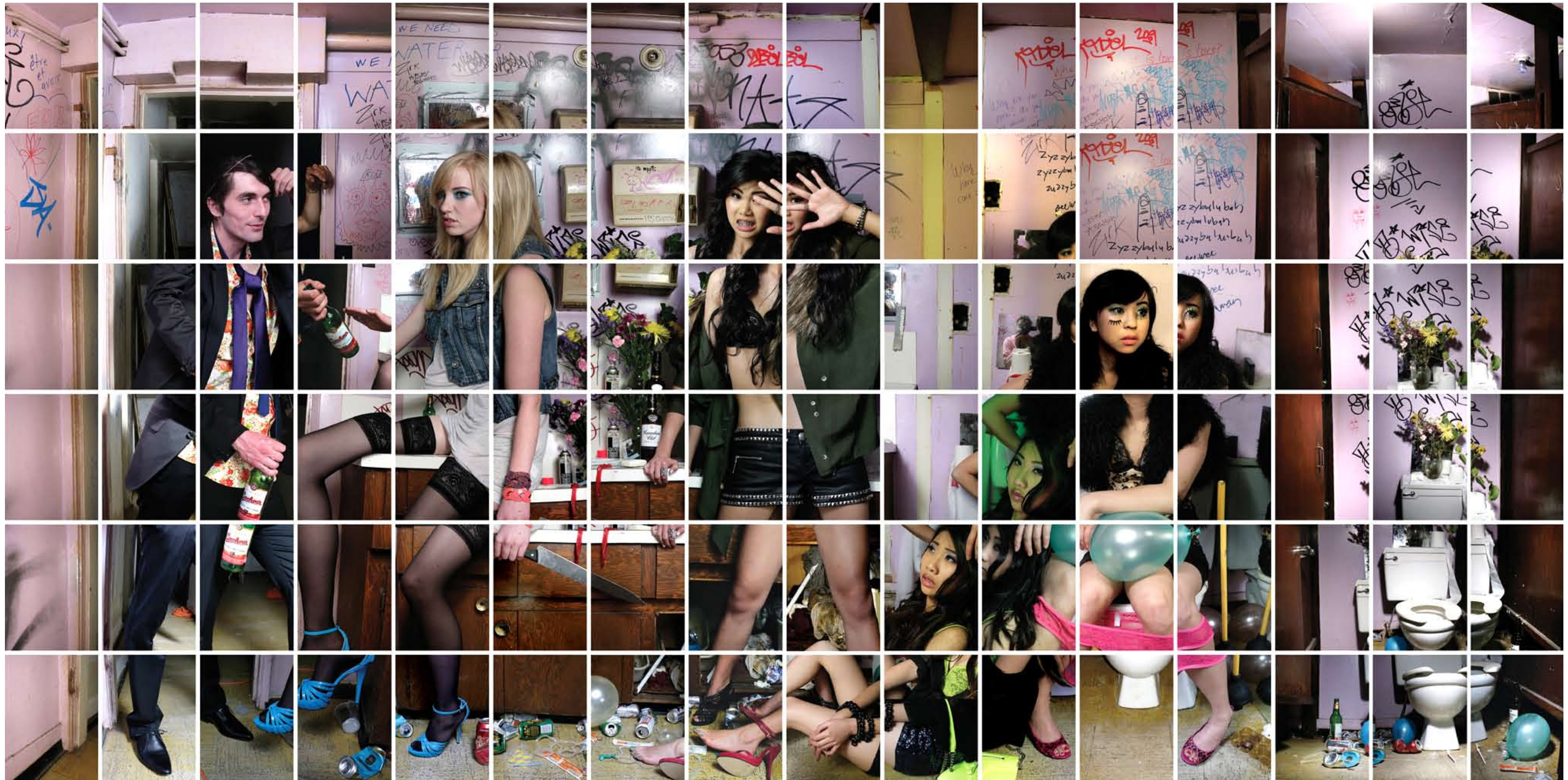
Photo-cubic Stoop Punks: Portrait Tableau

2009 - 2010 Toronto - Vancouver, Canada

Individual images: 22 x 28 cm / 8.3 x 11 in --- Overall installation: 206 x 366 cm / 81 x 144 in. / 6.75 x 12 ft.

Multiple format photographic prints, glass/steel/wood frames

[\[More Images\]](#)

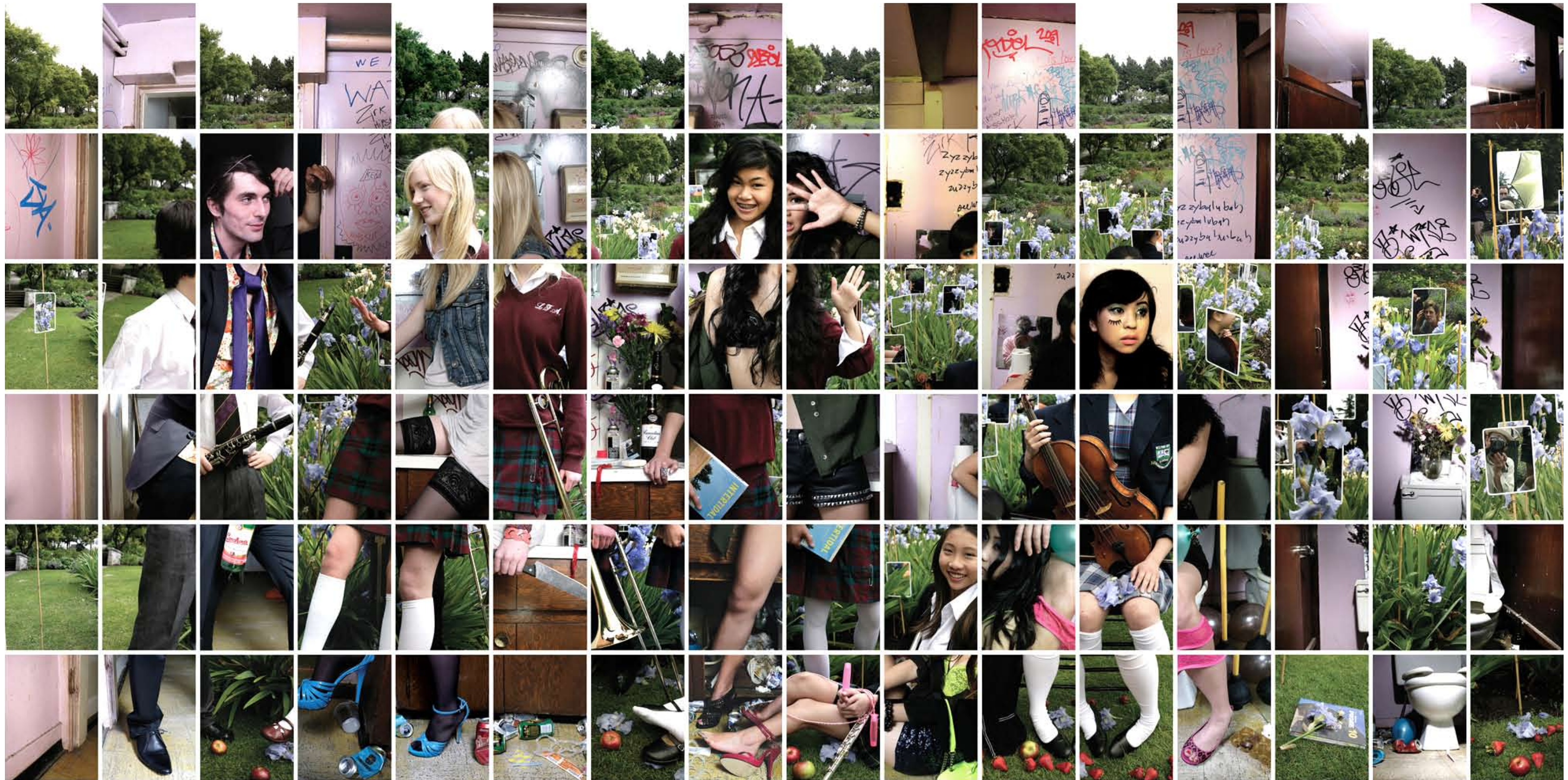


Don't Ask, Don't Tell (with Jennifer Osborne)

Interior Scene, first layer - DRAFT WORK IN PROGRESS

2010 Vancouver, Canada Individual images: 28 x 36 cm / 11 x 14 in --- Interior scene: 230 x 488 cm / 90 x 192 in / 7.5 x 16 ft. --- Overall installation: 90 x 1465 cm / 90 x 576 in / 7.5 x 48 ft Multiple format photographic prints, glass/steel frames

[\[More Images\]](#)



Don't Ask, Don't Tell (with Jennifer Osborne)

Mixed Scene, first layer DRAFT WORK IN PROGRESS

2010

Vancouver, Canada

Individual images: 28 x 36 cm / 11 x 14 in --- Mixed scene: 230 x 488 cm / 90 x 192 in / 7.5 x 16 ft --- Overall installation: 90 x 1465 cm / 90 x 576 in / 7.5 x 48 ft --- Multiple format photographic prints, glass/steel frames

[\[More Images\]](#)



Don't Ask, Don't Tell (with Jennifer Osborne)

Exterior Scene, first layer DRAFT WORK IN PROGRESS

2010

Vancouver, Canada

Individual images: 28 x 36 cm / 11 x 14 in --- Exterior scene: 230 x 488 cm / 90 x 192 in / 7.5 x 16 ft --- Overall installation: 90 x 1465 cm / 90 x 576 in / 7.5 x 48 ft Multiple format photographic prints, glass/steel frames

[\[More Images\]](#)

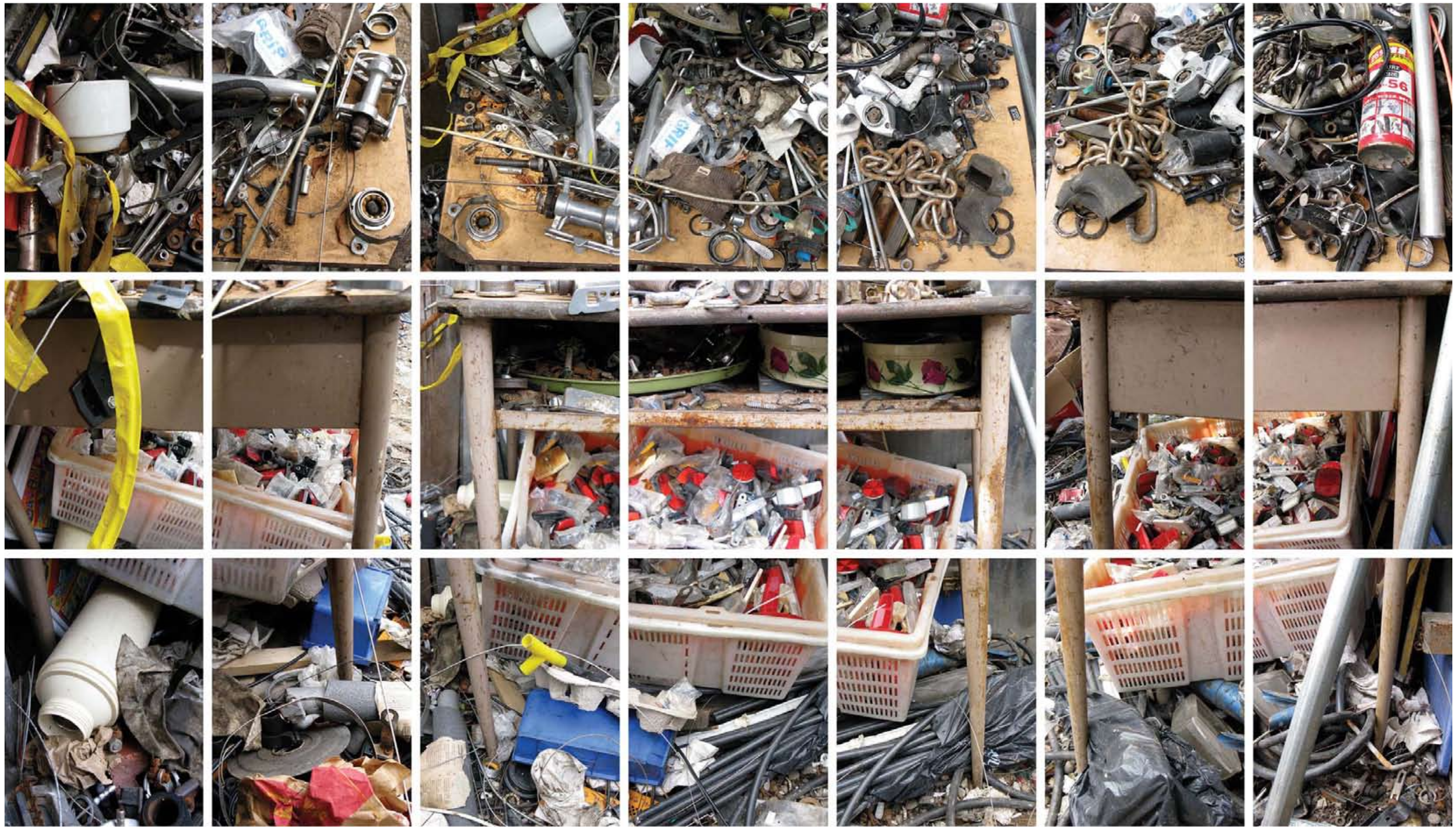


Photo-cubic Parts Unknown School Desk [Three-quarter wraparound: left side, front, and right side views]

2009

Toronto, Canada

Overall installation: 84 x 151 cm / 33 x 59.5 in Multiple format photographic prints, glass/steel frames

[\[More Images\]](#)



Photo-cubic Carpenters [On the Fractured Authenticity of Here and Now as Compared to Seamless Artistic Fiction in the Guise of Historical Representation]

2009 - 2010 Vancouver, Canada

Overall installation: 140 x 195 cm / 55 x 76.5 in / 4.6 x 6.4 ft.

Multiple format photographic prints on panel

[\[More Images\]](#)



Public Private Cubic Couple: [On the Actuality of Being Two Places at Once While Simultaneously Revealing Both Public and Private Persona]

2008 - 2009 Stanley Park + Vancouver Art Gallery, Vancouver, Canada

Overall installation: 168 x 216 cm / 66 x 85 in / 5.5 x 7 ft

Multiple format photographic prints on panel

[\[More Images\]](#)



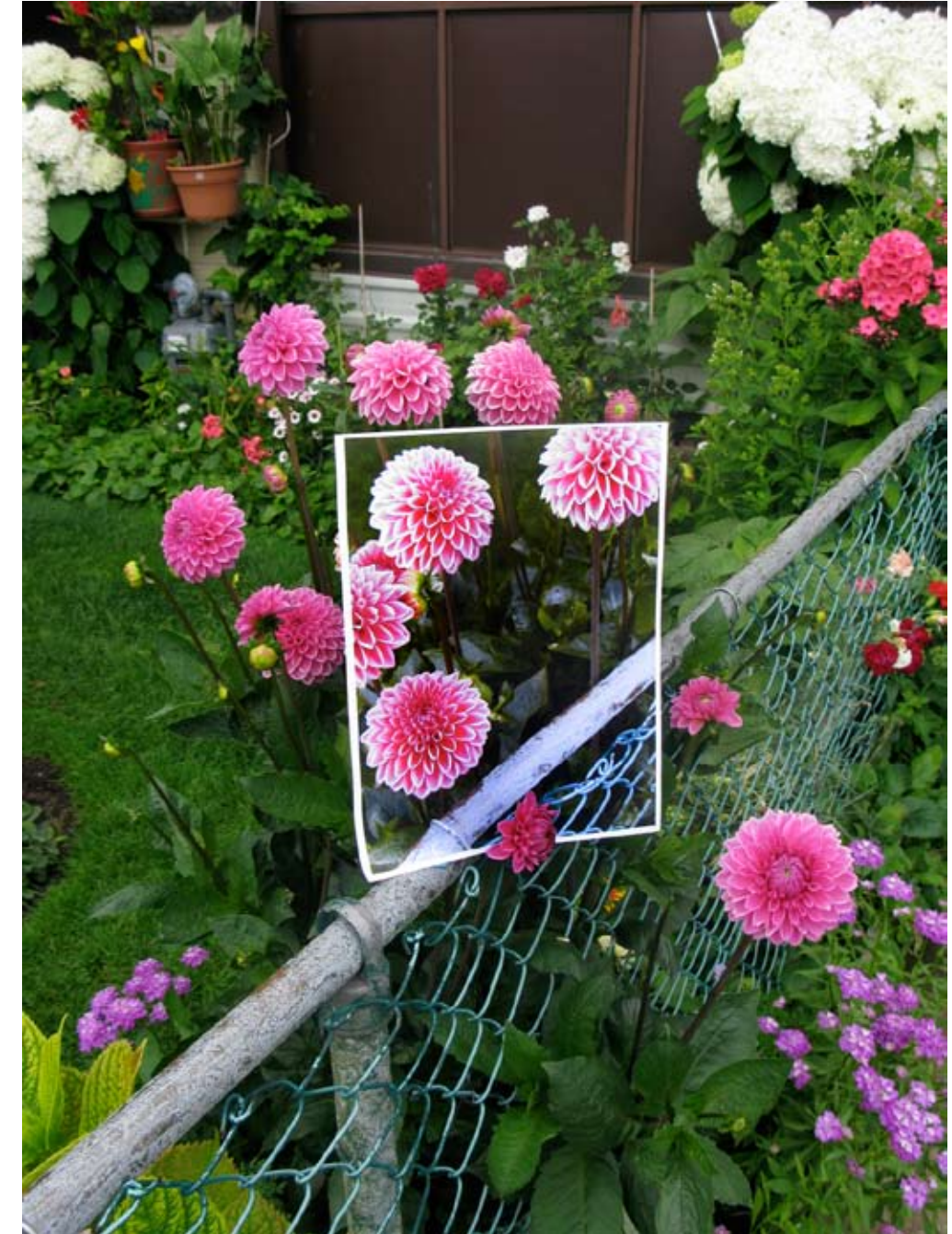
Andrew01 vs Cameraman Throwup Throwdown [Photo-based Competitive Challenge] (with Byron Dauncey)

2007 Vancouver, Canada

Central figures detail: 244 x 244 cm / 96 x 96 in / 8 x 8 ft --- Overall installation: 244 x 723 cm / 96 x 288 / 8 x 24 ft

Multiple format photographic prints, mixed media on panel

[\[More Images\]](#)

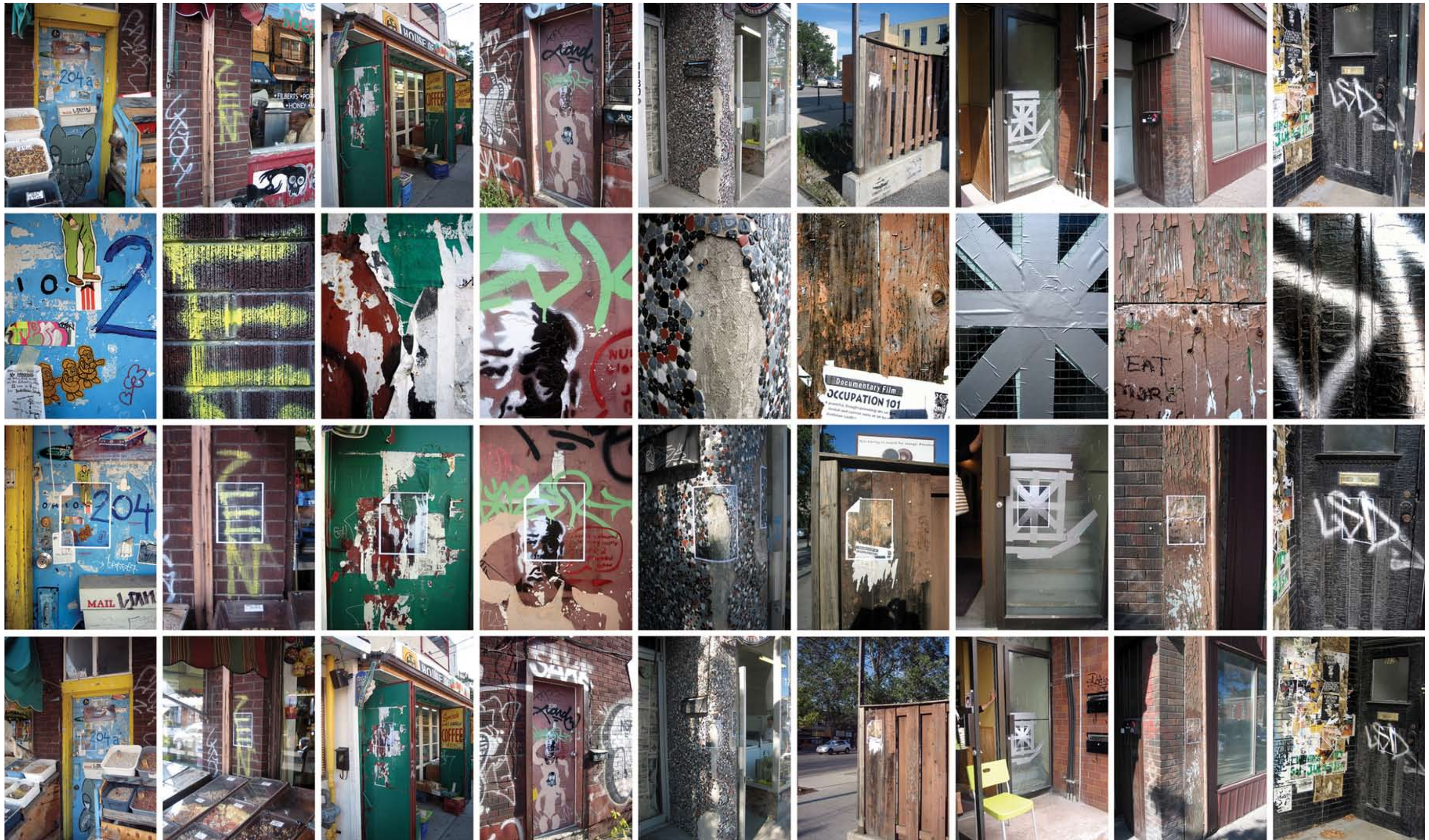


Re-photo-cubic Surfaces/People/Flowers [On the Possibility of Creating a Map of the Empire at a Scale of One to One While Foregrounding the Limitations of Representation]

Details: Taped Door; Stone Masons; Chysanthemum

2009 Toronto, Canada

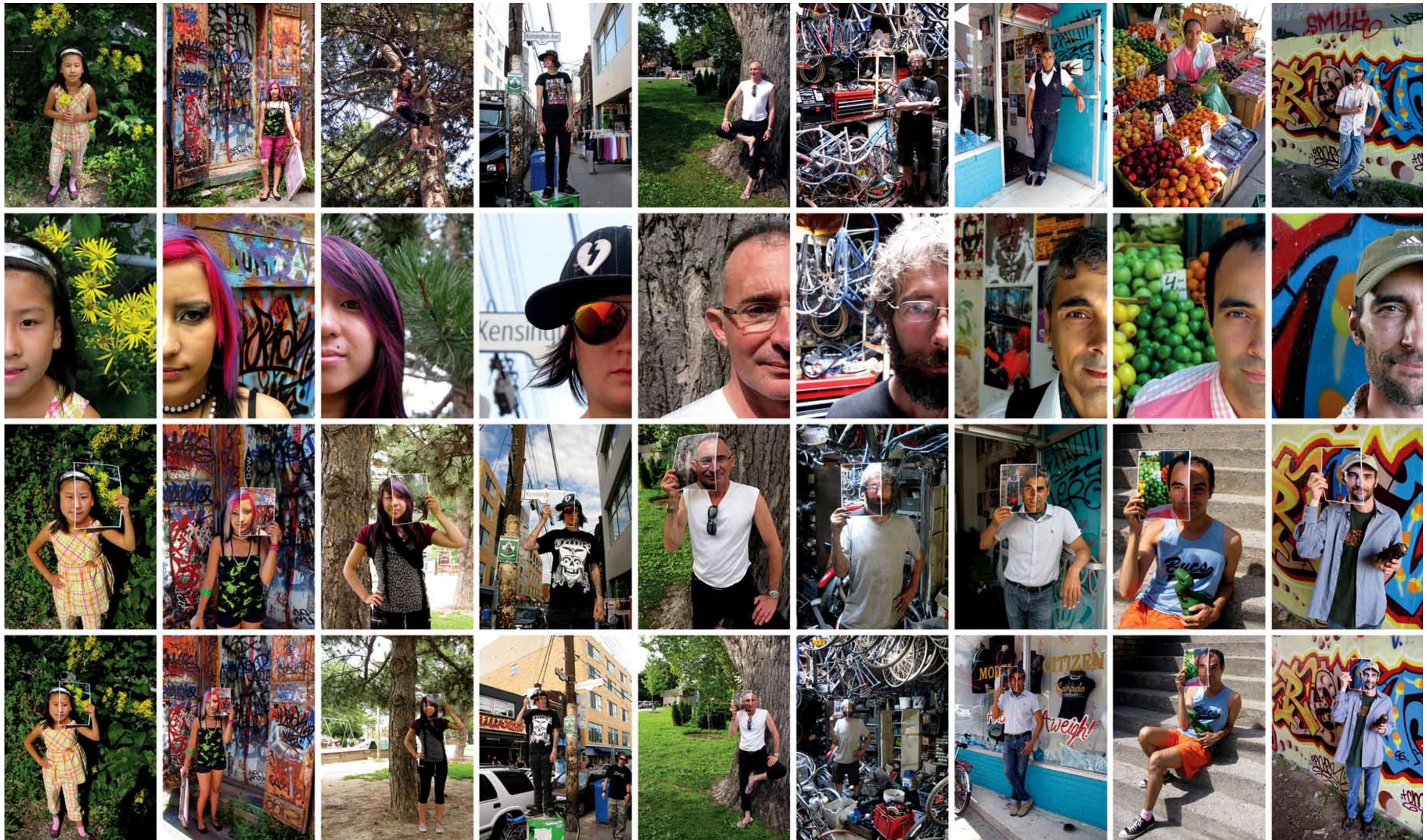
[\[More Images\]](#)



Re-photo-cubic Surfaces - Toronto [On the Possibility of Creating a Map of the Empire at a Scale of One to One While Foregrounding the Limitations of Representation: Surfaces] (10% detail)

2007 Toronto, Canada Central section (above): 112 x 216 cm / 44 x 85 in / 3.6 x 7 ft --- Overall installation: 112 x 2160 cm / 44 x 850 / 3.6 x 70 ft

[\[More Images\]](#)



Re-photo-cubic People: Solos - Toronto [On the Possibility of Creating a Map of the Empire at a Scale of One to One While Foregrounding the Limitations of Representation: Fauna]

(50% detail)

2009

Toronto, Canada

Central section (above): 112 x 216 cm / 44 x 85 in / 3.6 x 7 ft --- Overall installation: 112 x 432 cm / 44 x 170 / 3.6 x 14 ft

[\[More Images\]](#)



Re-photo-cubic Flowers - Toronto [On the Possibility of Creating a Map of the Empire at a Scale of One to One While Foregrounding the Limitations of Representation: Flora] (50% detail)

2009 Toronto, Canada Central section (above): 112 x 216 cm / 44 x 85 in / 3.6 x 7 ft --- Overall installation: 112 x 432 cm / 44 x 170 / 3.6 x 14 ft

[\[More Images\]](#)



Re-photo-cubic Cityfood (with Byron Dauncey)

2008 Vancouver, Canada variable dimensions

[\[More Images\]](#)



Photo-cubic Ferns

2007 Vancouver, Canada 65 x 108 cm / 25.5 x 44 in

[\[More Images\]](#)

A01

**Andrew Owen A01
Creative Produce**

**Photo-based
A r t w o r k s**

Turning photography back on itself by deploying an arsenal of meta-photographic strategies including: re-photography, filmic sequential series, repurposing found cameras, subject-object confusion, collapse of content and context and recontextualizing discarded identity images, in order to critique the implied technical objectivity of photography, and expose the socio-economic, political and ethical issues resulting from the distorting limitations of the traditional photographic gaze.

Copyright©AndrewOwen2010
[www.A01creative.com]



Alien Registration II

2004 - 2006 Taipei, Taiwan + Vancouver, Canada 40 x 51 cm / 16x 20 in Repurposed passport photographs

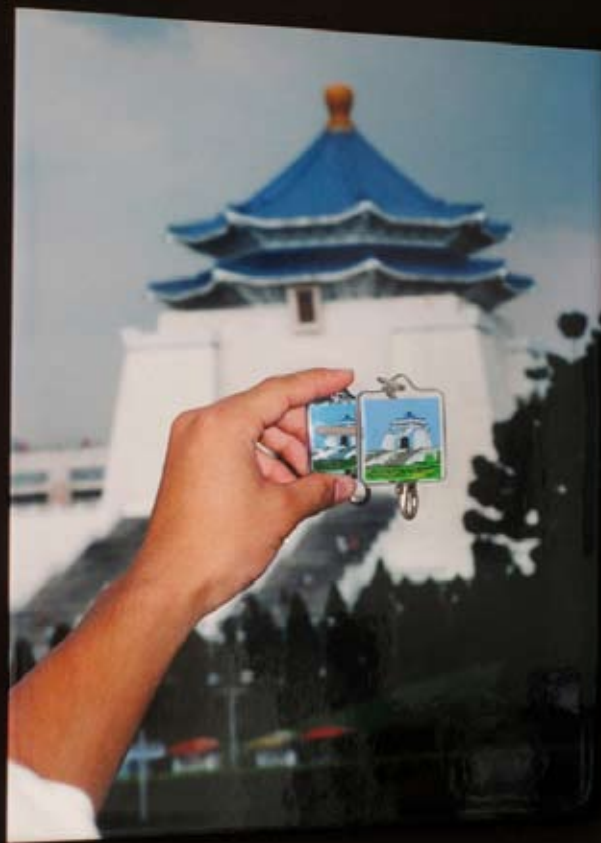
[[More Images](#)]



Alien Registration II - detail; Alien Registration I [On the Radical Excision and Abandonment of One's Original Identity to Adapt to the Inexorable Forces of Globalization]

2002 - 2006 Taipei, Taiwan + Vancouver, Canada Repurposed found passport photographs

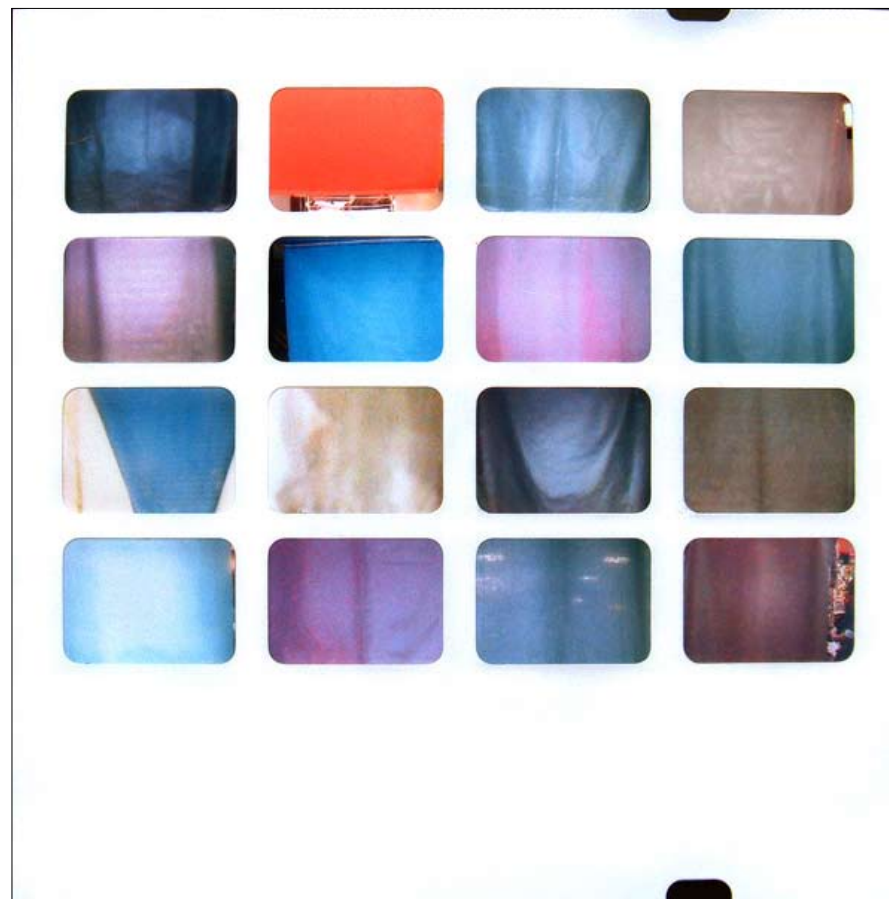
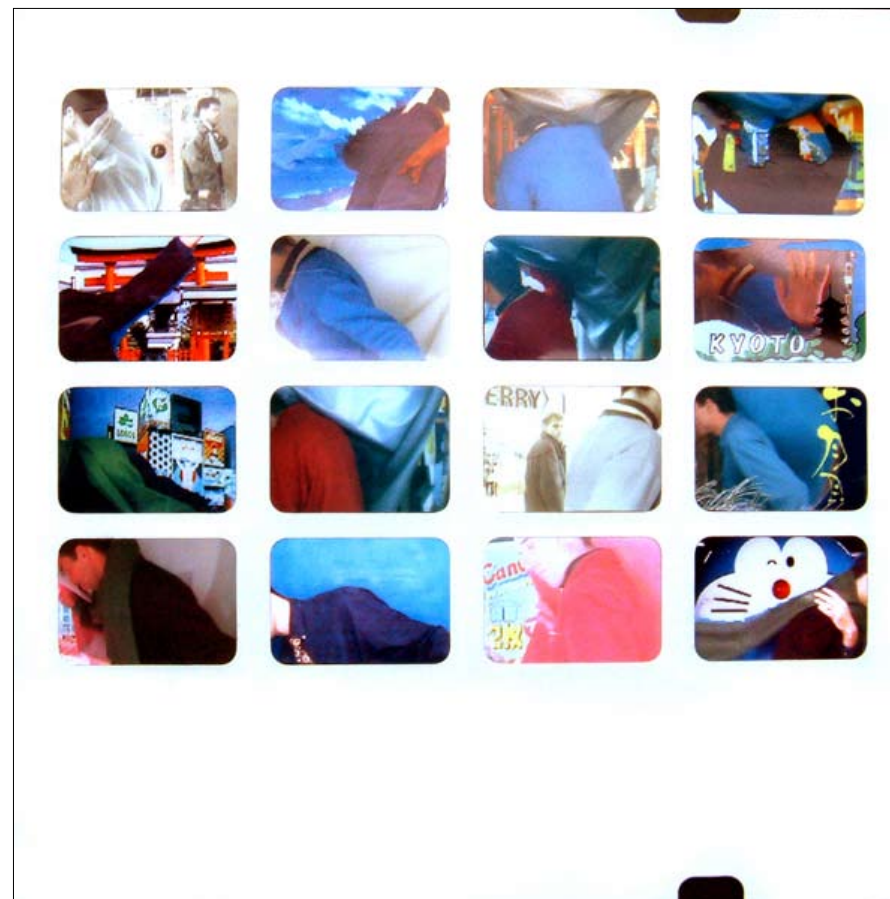
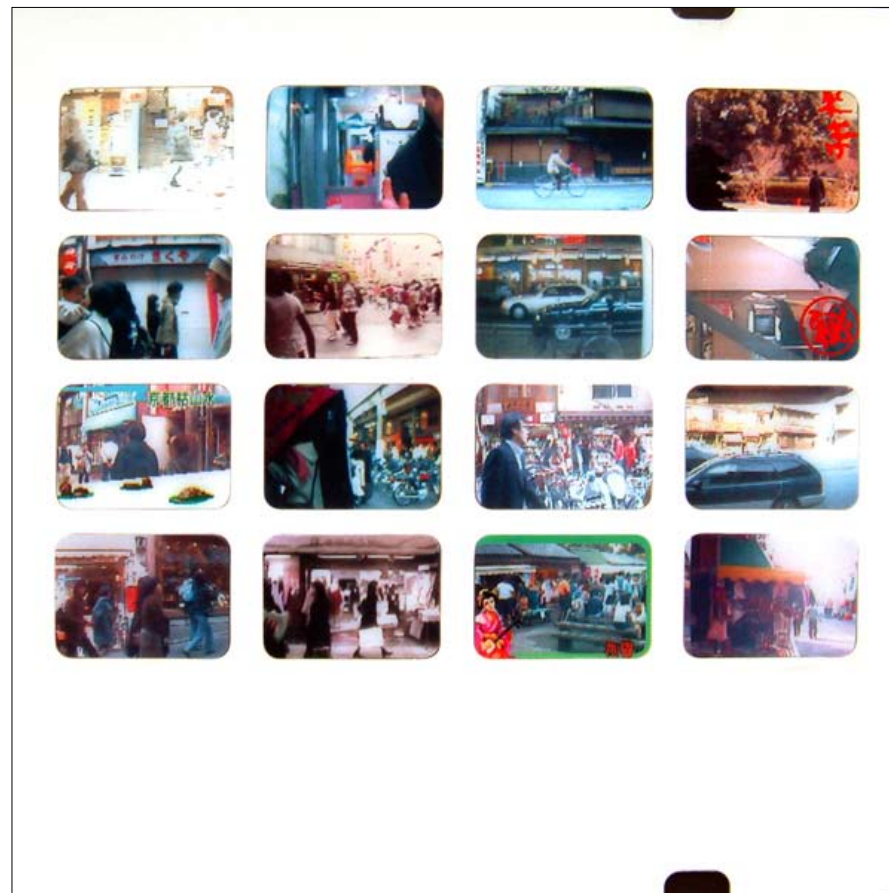
[\[More Images\]](#)



Globanality (Re-presented Wonders): [On the Relentless Production of Cultural Simulacra Threatening to Obliterate the Sites of Desire]

1996 - 2009 Word-wide Souvenir objects and photographs mounted on panels Each panel: 30 x 38 cm / 12 x 15 in --- Overall installation x 50 panels: ~ 220 x 340 cm / 87 x 134 / 8 x 12 ft

[\[More Images\]](#)



Automatic Landscapes: [Collapsing the Chasm Between Subject and Viewer; Allowing Content and Context to Become One] +detail

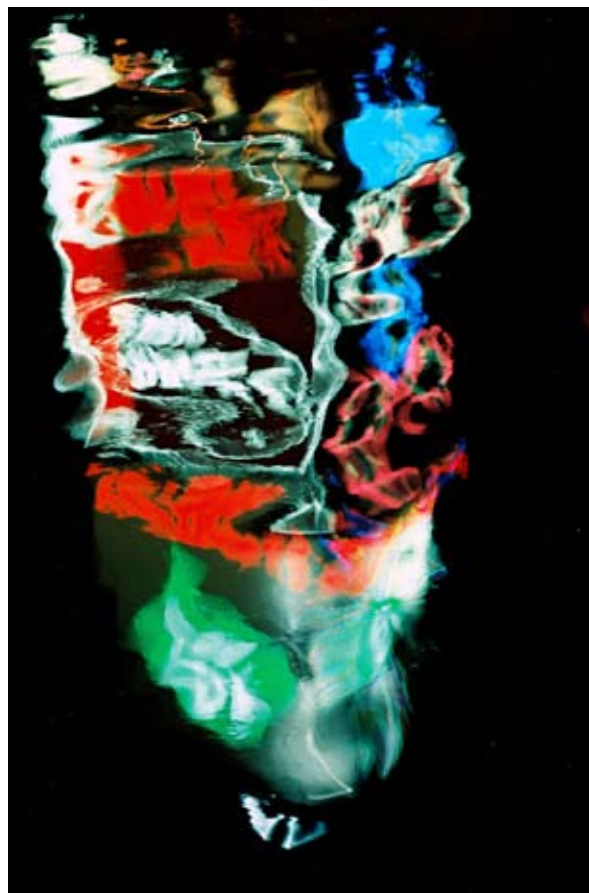
1997 - 2001 Korea + Japan

Repurposed digital photo-stickers

8 works total x 16, 1.5 x 2 cm images ea.

Each work: 11 x 11 cm / 4.33 x 4.33 in + 10X ink jet on laminated film enlargements: 110 x 100 cm / 43 x 43 in ea.

[\[More Images\]](#)



Water & Electricity Do Mix

1998 - 99

Osaka, Japan

Photographic prints suspended from horizontal cables Dimensions variable

[\[More Images\]](#)



Glow in the Dark [Betelnut Beauties of Roadside Taiwan]

2003

Taipei, Taiwan

Photographic prints

Dimensions variable

[\[More Images\]](#)



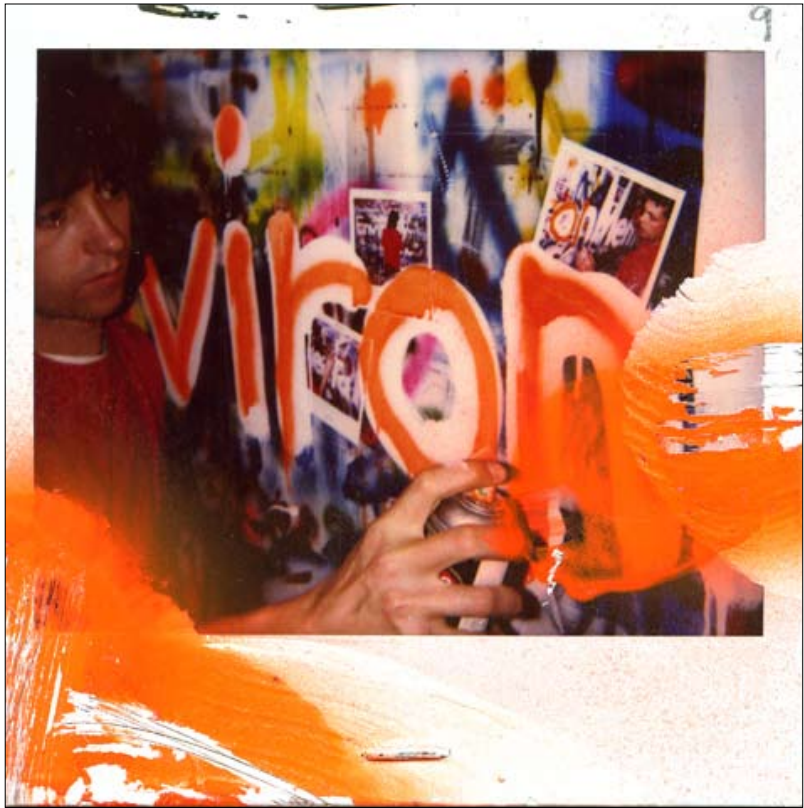
Equator Art Experiment [On Determining Which Direction Vortices of Water Flow When Directly Upon the Global Equator](with Helen Cho)

1996 Global Equator, Sumatra, Indonesia

Photographic documentation, labeled equipment in case

Dimensions variable

[\[More Images\]](#)



EnvironMental Re-photographic Polaroid Painting (with Jamie Osborne)

1989 Toronto, Canada

Sequence of 10 painted and rephotographed Polaroid photographs, staples, white latex, orange spray enamel

[\[More Images\]](#)

A01

**Andrew Owen A01
Creative Produce**

Excavations [Vancouver]

Cutting, peeling and excavating into the multiple layers of paper poster hoardings harvested from the urban surface of Vancouver's Downtown Eastside and Chinatown.

Systematically revealing the various underlying strata of ephemeral images and information in a meticulous and time-consuming process akin to archeological excavation: revealing the passage of time, exposing the layering of past activities and events, and discovering forgotten treasures within.

Creation by a subtractive process: nothing is added, only subtracted. Creating artifacts of beauty, historical importance and value by simply removing a few layers from abandoned ephemera.

Copyright©AndrewOwen2010
www.A01creative.com



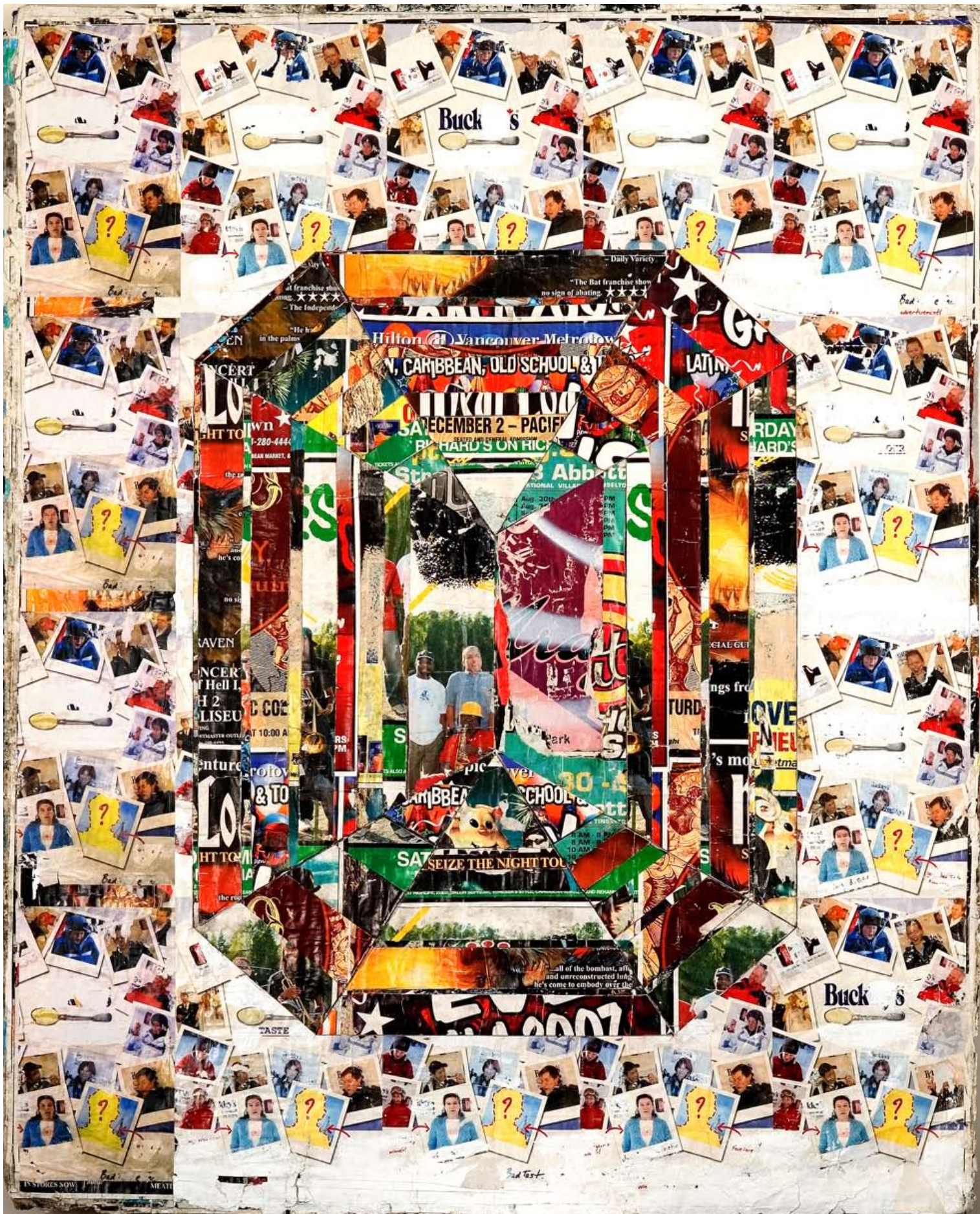
Autumn to Winter [Maple Leaf & Bamboo, Canada & China, Westside & Eastside, Sheila & I]
2007 Vancouver Canada 71 x 112 cm / 28 x 44 in Excavated paper poster hoarding
[\[More Images\]](#)



Brilliant Cut +detail

2008 Vancouver Canada 132 x 142 cm / 52 x 56 in Excavated paper poster hoarding

[\[More Images\]](#)



Emerald Cut +detail

2008 Vancouver Canada 132 x 142 cm / 52 x 56 in Excavated paper poster hoarding

[\[More Images\]](#)



Brilliant Cut Maquette

2007 Vancouver Canada

40 x 40 cm / 16 x 16 in

Excavated paper poster hoarding

[\[More Images\]](#)



Emerald Cut Maquette

2007 Vancouver Canada

40 x 40 cm / 16 x 16 in

Excavated paper poster hoarding

[\[More Images\]](#)



Lilies Excavation II

2006 Vancouver Canada 30 x 40 cm / 12 x 16 in Excavated paper poster hoarding

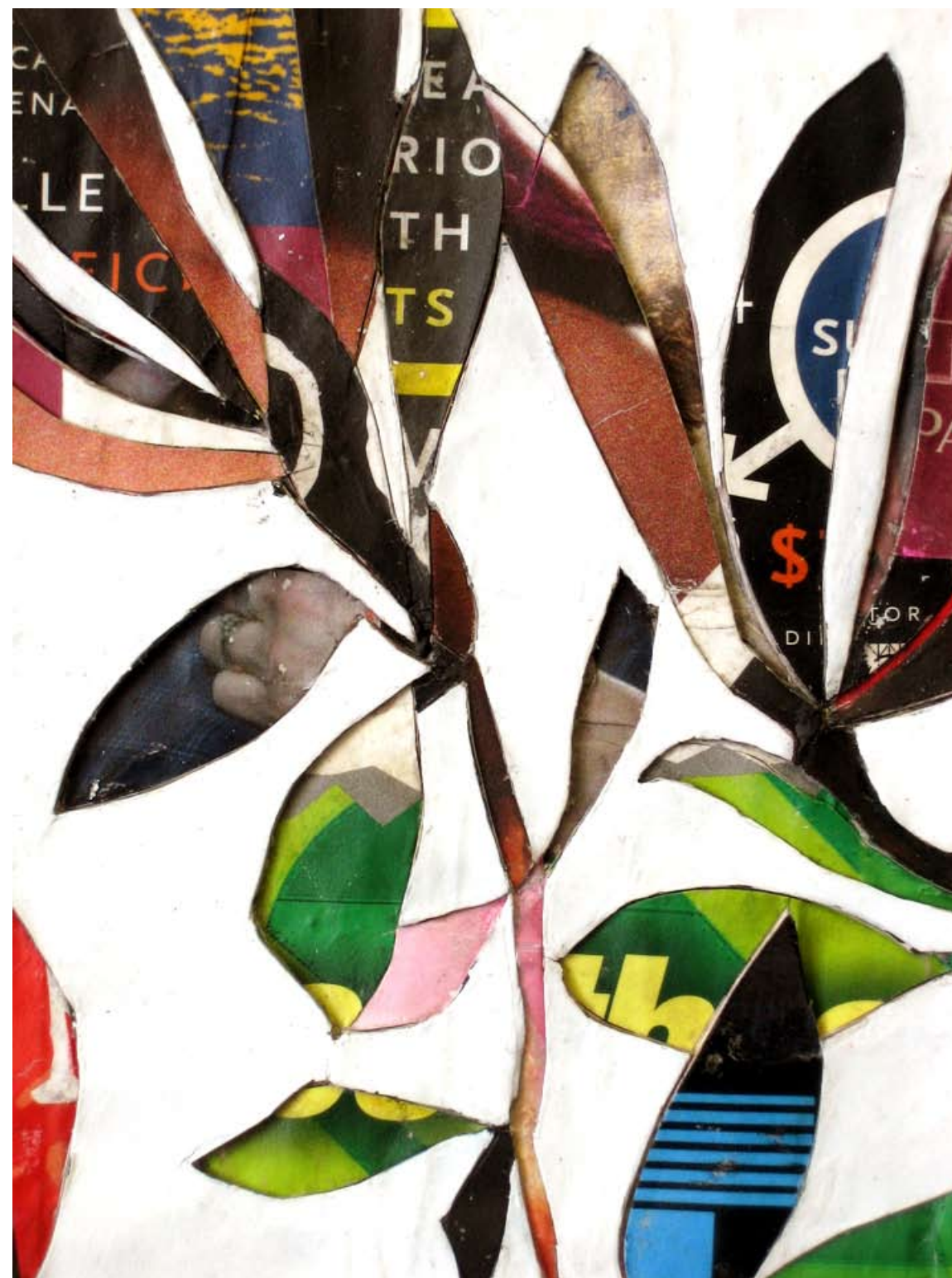
[\[More Images\]](#)



Bamboo Excavation II

2007 Vancouver, Canada 30 x 40 cm / 12 x 16 in Excavated paper poster hoarding

[\[More Images\]](#)



Magnolia II +detail

2007 Vancouver Canada 30 x 45 cm / 12 x 18 in

Excavated paper poster hoarding

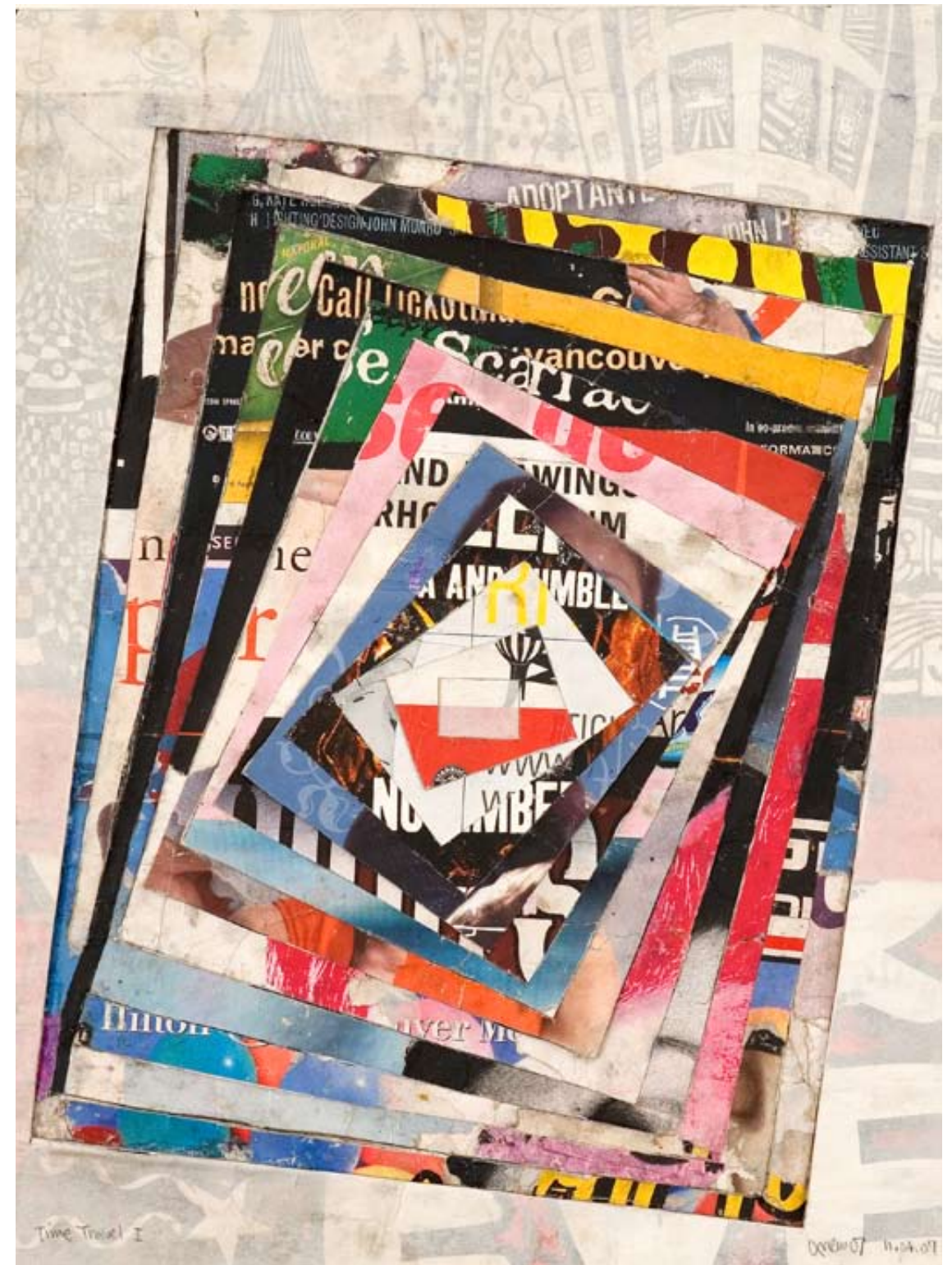
[\[More Images\]](#)



Time Travel I

2006 Vancouver, Canada 31 x 40 cm / 12 x 16 in Excavated paper poster hoarding

[\[More Images\]](#)



Time Travel II

2006 Vancouver Canada 31 x 40 cm / 12 x 16 in Excavated paper poster hoarding

[\[More Images\]](#)



Maximum Disruption

2007 - 2010 Vancouver, Canada 93 x 140 cm / 36.5 x 55 in Excavated paper poster hoarding

[\[More Images\]](#)



Maximum Disruption Maquette [Rosenquist Slashes]

2007 Vancouver, Canada 31 x 45 cm / 12 x 17.5 in Excavated paper poster hoarding

[\[More Images\]](#)

A01

Andrew Owen A01 Creative Produce

Impressions [C a n a d a]

Floral paintings created with an original experimental technique employing natural plants and flowers as positive stencils in a spray painting process that captures very detailed and life-like impressions of the actual flora.

The program was initiated at a small-scale on paper in Korea, Japan and Taiwan, Republic of China, before further evolving in scope and scale on canvas in Canada.

Created in the field amongst the flowers, each in one all-day sitting, only one in two works succeed. The floral paintings result from the intersection of deliberate skill and accidental chance.

Informed by deep study of Chinese ink painting, yet employing a Western materiality and process, the florals transcend false dichotomies between East and West, traditional and contemporary, real and representational.

Copyright©AndrewOwen2010
[\[www.A01creative.com\]](http://www.A01creative.com)



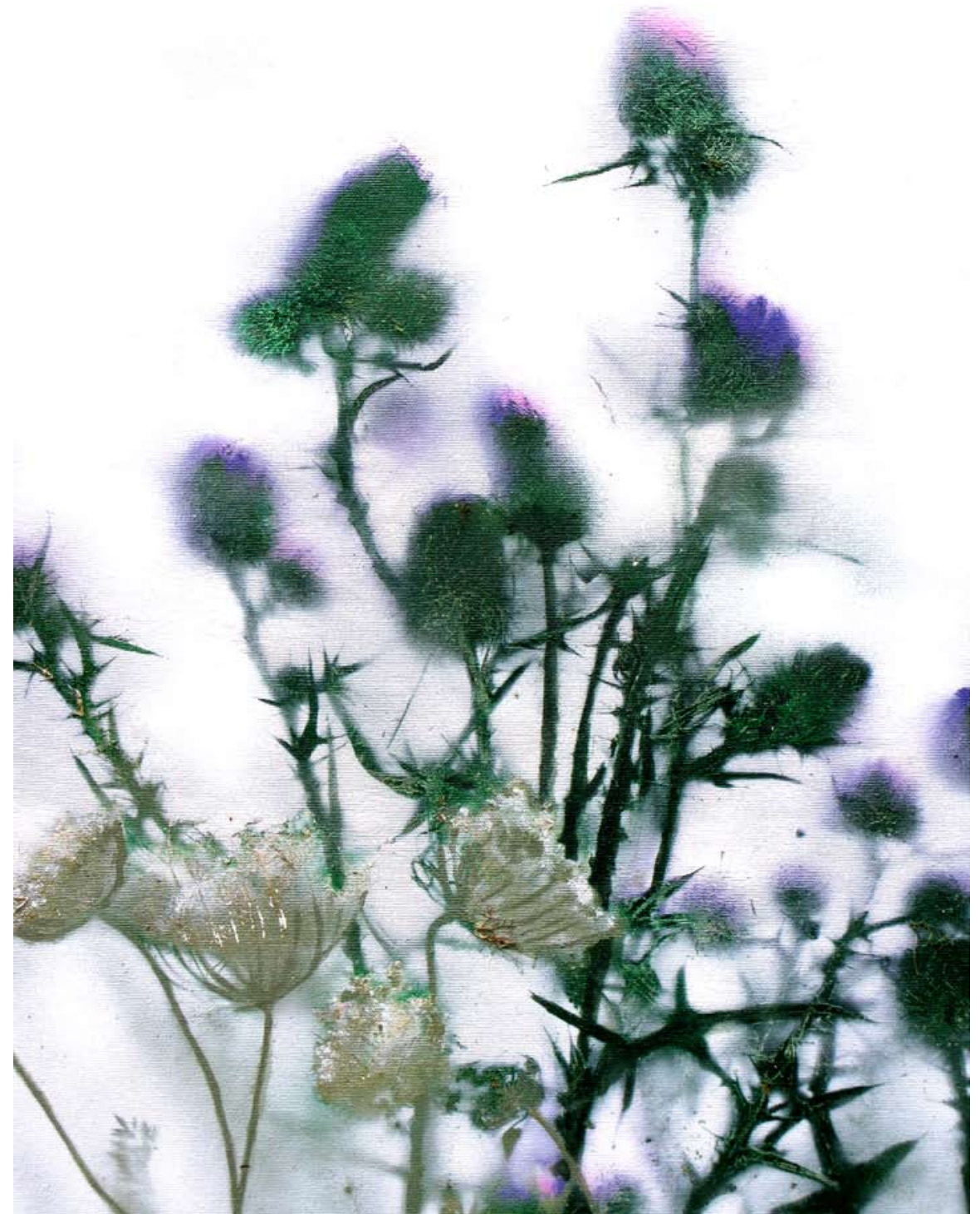
Fireweeds

2008 Vancouver, Canada

104 x 150 cm / 41 x 59 in

Spray enamel and flowers on canvas

[\[More Images\]](#)



Ontario Weeds II +detail

2009 Toronto, Canada

152 x 213 cm / 60 x 84 in

Spray enamel and flowers on canvas

[\[More Images\]](#)



Pink Popcorn Plum Blossoms on Black +detail

2010 Vancouver, Canada 101 x 152 cm / 40 x 60 in Spray enamel and flowers on canvas

[\[More Images\]](#)



Three Friends of Winter

+detail

2008 Vancouver, Canada

79 x 107 cm / 31 x 42 in

Spray enamel and flowers on canvas

[\[More Images\]](#)



Humber River Wildflowers II +detail

2007

Toronto, Canada

122 x 173 cm / 48 x 68 in

Spray enamel and flowers on canvas

[\[More Images\]](#)



Funny Farm Flowers

2007 Ontario, Canada

91 x 112 cm / 36 x 44 in

Spray enamel and flowers on canvas

[\[More Images\]](#)



Kitsilano Flowers

2008 Vancouver, Canada

76 x 112 cm / 30 x 44

Spray enamel and flowers on canvas

[\[More Images\]](#)



Metallic Maple Leaves & Bamboo on Black

2008 Vancouver, Canada 97 x 145 cm / 38 x 57 in Metallic spray enamel on canvas

[\[More Images\]](#)



Metallic Oak Leaves on Black

2008 Vancouver, Canada 97 x 145 cm / 38 x 57 in Metallic spray enamel on canvas

[\[More Images\]](#)



Winter to Spring +detail
2005 Vancouver, Canada 66 x112 cm / 26 x 44 in Spray enamel and flowers on canvas
[\[More Images\]](#)



False Creek Irises

2005 Vancouver 55 x 97 cm / 30 x 44 in Spray enamel on canvas

[\[More Images\]](#)



Ontario Weeds I

2005 Vancouver 56 x 96 cm / 22 x 38 in Spray enamel on canvas

[\[More Images\]](#)



One Poppy at Night

2008 Vancouver 76 x 102 cm / 30 x 40 in Spray enamel on canvas

[\[More Images\]](#)



A01

**Andrew Owen A01
Creative Produce**

C O N T A C T

ARTIST DIRECT:

Andrew Owen A01

Web www.a01creative.com

Email andrew_a01@yahoo.ca

Toronto 647.770.0885

Vancouver 604.338.3252

VANCOUVER REPRESENTATIVES:

Marion Scott Gallery

Judy Kardosh, Robert Kardosh

Web: www.marionscottgallery.com

Email art@marionscottgallery.com

Vancouver 604.685.1934